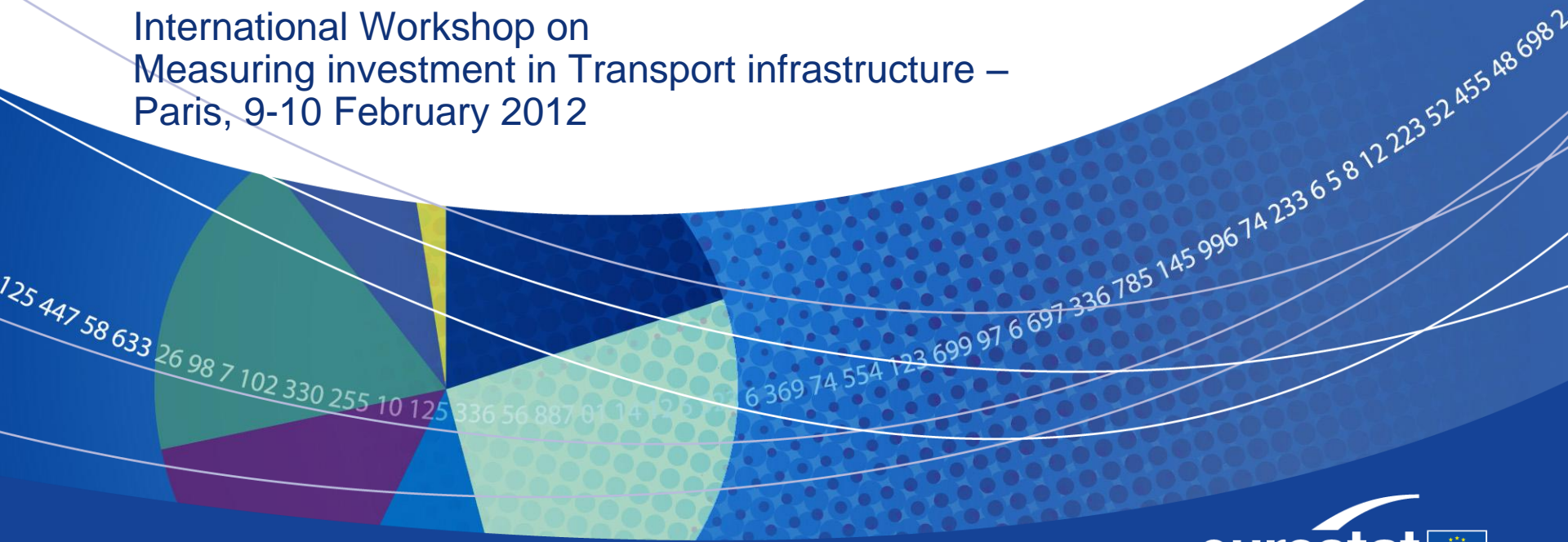
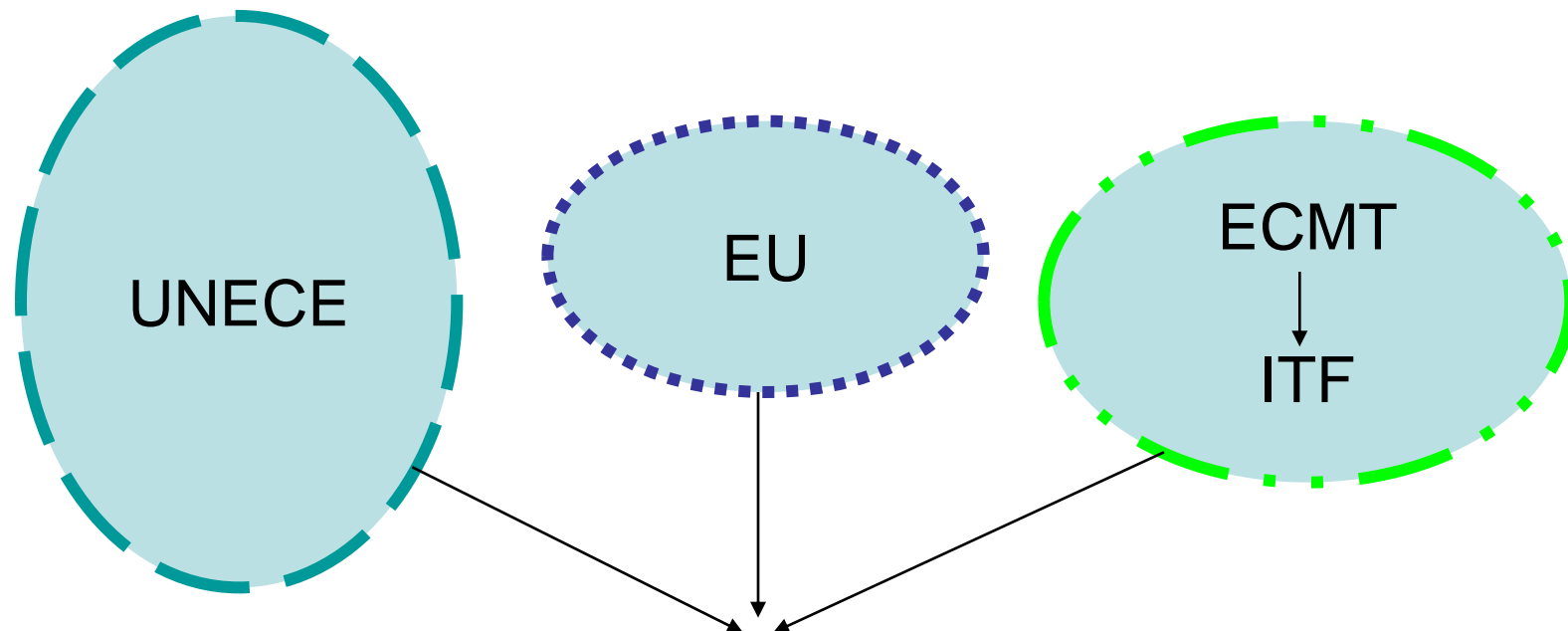


Data from the The Eurostat/ITF/UNECE Common Questionnaire

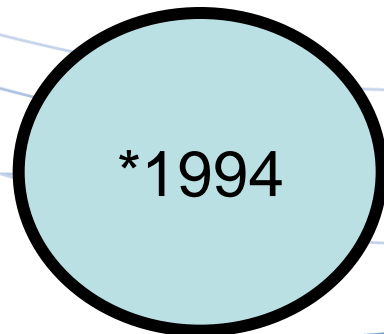
International Workshop on
Measuring investment in Transport infrastructure –
Paris, 9-10 February 2012





Dismissed 1994

Common Questionnaire



UNECE ~55

The diagram consists of three overlapping light blue shapes. The largest shape is a circle at the top labeled 'UNECE ~55'. Below it is a horizontal oval labeled 'EU 27 + EFTA 4'. At the bottom is another horizontal oval labeled 'ITF ~45 + ~10'. The 'EU 27 + EFTA 4' oval is contained within the 'UNECE ~55' circle. The 'ITF ~45 + ~10' oval overlaps with the bottom of the 'UNECE ~55' circle and the bottom of the 'EU 27 + EFTA 4' oval.

EU 27 + EFTA 4

ITF ~45 + ~10

Modes and categories of variables

Modes: A) Rail, B) Road, C) IWW, etc..

Categories: I) infrastructure, II) Tr. Equipment,
III) Socio-Economic, IV) Traffic, V) Transport,
VI) Energy Consumpt. VII) Accidents

Rail

<u>4. INVESTMENT AND MAINTENANCE EXPENDITURE IN INFRASTRUCTURE IN RAILWAY ENTREPRISES</u> <i>Amount for the year (national currency in current prices) (millions)</i>
04020. total
by nature of expenditure
04021. investment [III-13]
04022. maintenance [III-15]

Road

4. INVESTMENT AND MAINTENANCE EXPENDITURE IN ROAD INFRASTRUCTURE <i>Amount for the year (national currency in current prices) (millions)</i>
04020. total
by nature of expenditure
04021. investment [III-17]
04022. maintenance [III-19]

Inland Waterways

4. INVESTMENT AND MAINTENANCE EXPENDITURE IN INLAND WATERWAYS TRANSPORT INFRASTRUCTURE	
	<i>Amount for the year (national currency in current prices) (millions)</i>
04020. total	
by nature of expenditure	
04021. investment [III-14]	
04022. maintenance [III-16]	

Oil Pipelines

3. <u>INVESTMENT AND MAINTENANCE EXPENDITURE IN OIL PIPELINE</u> <u>INFRASTRUCTURE</u> <i>Amount for the year</i> <i>(national currency in current prices)</i> <i>(millions)</i>
03020. total
by nature of expenditure
03021. investment expenditure [III-12]
03022. maintenance expenditure [III-13]

A voluntary data collection from CNAs

Source: National Statistical Institutes and Ministries of Transport

Problem: Voluntary data collection →
Incomplete, sparse data



UNITED
NATIONS
ECONOMIC
COMMISSION
FOR
EUROPE



Illustrated Glossary for Transport Statistics

4th EDITION

FINAL VERSION 14/07/2009

Eurostat/ITF/UNECE

Glossary for Transport Statistics

- Bulgarian, Czech, Danish, Dutch, English (illustrated), Estonian, Finnish, French, German, Greek, Hungarian, Italian, Latvian, Lithuanian, Maltese, Polish, Portuguese, Romanian, Slovak, Slovene, Spanish and Swedish
- Croat, Serbian, Turkish (3rd), Russian and Arabic
- Other languages, encouraged

http://ec.europa.eu/eurostat/ramon/other_documents/transport_glossary_4_ed/index.cfm?TargetUrl=DSP_TRANSPORT_GLOSSARY_4_ED

<http://www.unece.org/trans/main/wp6/transstatglossmain.html>

<http://www.internationaltransportforum.org/Pub/pdf/09GloStat.pdf>

Questions?
Remarks?
Comments?