

# ● An introduction to the European Commission's TENtec Information System

**International workshop on Measuring Investment in Transport Infrastructure**

**IEA-9, rue de la Fédération, Paris  
09 February 2012**

**Presentation by  
Helmut Morsi,  
Deputy Head of Unit, DG MOVE-B1 - Trans-European Network  
& Head of Sector – TENtec & Innovation  
European Commission**

## ● **TENtec – *towards introducing useful eGovernment***

- » Using IT to lay foundations & implement policies and manage programmes
- » Promote & explain: policy & spending to EU-citizens
- » SMART-IT development principle (e.g. user- instead of IT-driven)
- » The role of the core development team (=TENtec team) / The role of the pilot users
- » Hosting by DG-DIGIT data centre (security, economies of scale, expertise)

## ● Translation into Practise: Method

### ● Open Method of Coordination (OMC)

- » Data bridges to all TEN-T stakeholders -> Creating a complete overview of all technical features and budgets of the TEN-T network (around 8000 sections)
- » Data: All contribute – All benefit (win-win-situation)
- » However: Data protection – each country is separate until final validation in workflow
- » Integrated 2-step validation workflow for technical modifications (case A) -> natural improvement and completion of database (legal base exists already!)
- » Integrated 3-step validation workflow for political modifications (case B) -> additional security/protection of planning/new legislation (legal base in preparation)
- » State of the art features (interactive satellite maps) -> favourite daily working tool
- » Continuous monitoring of TEN-T Programme

# ● Translation into Practise: Who, What and How (1)

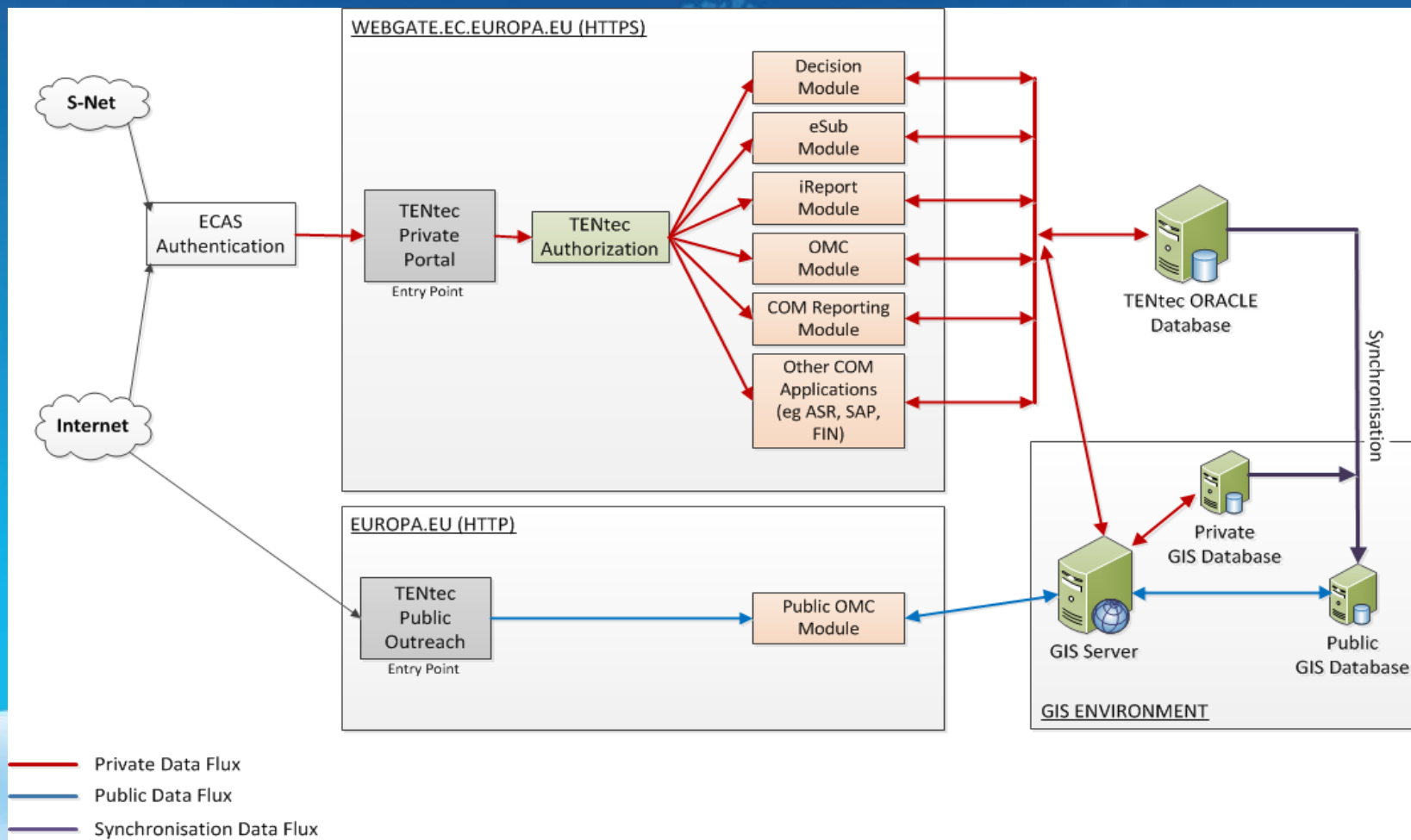
- Online collection from transport ministries ++ and publication of monitoring data:
  - » iReport: TEN-T PP Progress Reports 2009, 2010 & 2011
  - » OMC V2: the TEN-T Implementation Report 2011 (entire network) – technical and financial data of all sections (around 8000)
  - » Full support of the current TEN-T Guideline Review, via close (= direct) collaboration with transport ministries

## ● Translation into Practise: Who, What and How (2)


- New user communities opened: DG REGIO (parameters by NUTS regions, cohesion funds), DG ENV (Natura 2000 map overlay).
- Other interested parties: EIB, EU neighbours (Western Balkans (SEETO), Turkey, EuroMed, Northern Partnership, and Eastern Partnership).
  - *many have already started the collaboration by sending data, receiving logons, investigating possibilities, etc.*
- *TENtec roadmap has a significant time slot in 2012 for full IT co-operation with EU neighbours and EIB.*  
*Offer: use the software «debugged» with MS also directly for other TEN-T stakeholders & neighbours.*

# The TENtec Information System V2

## - Open Architecture: Common Frame & Specialised Modules



# TENtec iReport Module



## TENtec

## iReport

View | Print | Validate (COM)

View report

Version: J | Status: work | Feedback: created working copy by GASCOIGNE Thomas on 2013-10-10 00:00:00.0

A1 | A2 | A3 | **A4** | A5 | B

EUROPEAN COMMISSION TRANS-EUROPEAN TRANSPORT NETWORK A.4. Priority Projects (\*)

Please mention the foreseen investments for these priority projects (in Euros).

| Priority Project                | Before 2003    | Expenditure 2004 | Expenditure 2005 | Expenditure 2006 | Expenditure 2007 | Expenditure 2008 | Foreseen Investment 2009 | Foreseen Investment 2010-2013 | Foreseen Investment 2014-2020 |
|---------------------------------|----------------|------------------|------------------|------------------|------------------|------------------|--------------------------|-------------------------------|-------------------------------|
| Railways                        | 3.48E9         | 1.816E9          | 2.6842E9         | 4.16343E9        | 3.8062E9         | 3.762406E9       | 5.479363E9               | 2.53129E10                    | 1.7393111E10                  |
| Roads                           | 1.673301236E9  | 4.1744958E7      | 8.8410491E7      | 6.0582996E7      | 4.5574523E7      | 3.7342797E7      | 2.7876393E7              | 5.1494266E7                   | 0.0                           |
| Ports                           | 0.0            | 0.0              | 0.0              | 0.0              | 0.0              | 0.0              | 0.0                      | 0.0                           | 0.0                           |
| Airports                        | 0.0            | 0.0              | 0.0              | 0.0              | 0.0              | 0.0              | 0.0                      | 0.0                           | 0.0                           |
| Inland Waterways (incl. ports); | 0.0            | 0.0              | 0.0              | 0.0              | 0.0              | 0.0              | 0.0                      | 0.0                           | 0.0                           |
| Other (please specify);         | 0.0            | 0.0              | 0.0              | 0.0              | 0.0              | 0.0              | 1.0E7                    | 2.0E7                         | 0.0                           |
| <b>Total</b>                    | 10153301236.00 | 1657744658.00    | 2772610491.00    | 4224012996.00    | 3851774523.00    | 3799748797.00    | 5517259393.00            | 25384394266.00                | 17393111000.00                |

(\*) Note: Including all the priority and non-priority sections on the Priority Projects

Edit Report

Delete Report

Submit (to MS)



Submit (to COM)

Reject Report (MS)

Return



# TENtec eSubmission Module



**Navigation**

- Application
  - A1
  - A3.1**
  - A3.2
  - A3.3
  - A3.4
- Applicants
  - Applicant - 1
  - Supporting Documents

**A3.1 - Location of the action**

Member states and regions

| Name | Regions |
|------|---------|
|------|---------|

**Add Member State and regions**

Geographical co-ordinates

| Point | Longitude (DMS) | Latitude (DMS) | Longitude (DD) | Latitude (DD) |
|-------|-----------------|----------------|----------------|---------------|
|-------|-----------------|----------------|----------------|---------------|

Add point [DMS] Add point [DD]

Activities and milestones of the action

Activities of the action

| Activity Number | ISIC Code | Activity Name | Start date | End date | Verifying Milestone |
|-----------------|-----------|---------------|------------|----------|---------------------|
|-----------------|-----------|---------------|------------|----------|---------------------|

**Add activity**

Milestones of the action

| Milestone Number | Milestone Name | End date | Means of verification |
|------------------|----------------|----------|-----------------------|
|------------------|----------------|----------|-----------------------|

**Add milestone**


Contribution of the action to the TENT-T Policy:

| Decision number | Title |
|-----------------|-------|
|-----------------|-------|

**Add Decision**

**Save Save and Exit Cancel**

Directorate-General  
for Mobility  
and Transport



EUROPEAN  
COMMISSION

Trans-European Networks for Transport (TEN-T)

# OMC – Comparison of Geodata: Technical modifications (Case A) with 2005 data



European Commission – Coordination of TEN-T Policy

OMC-GIS

[Back to portal](#)

[Help](#)

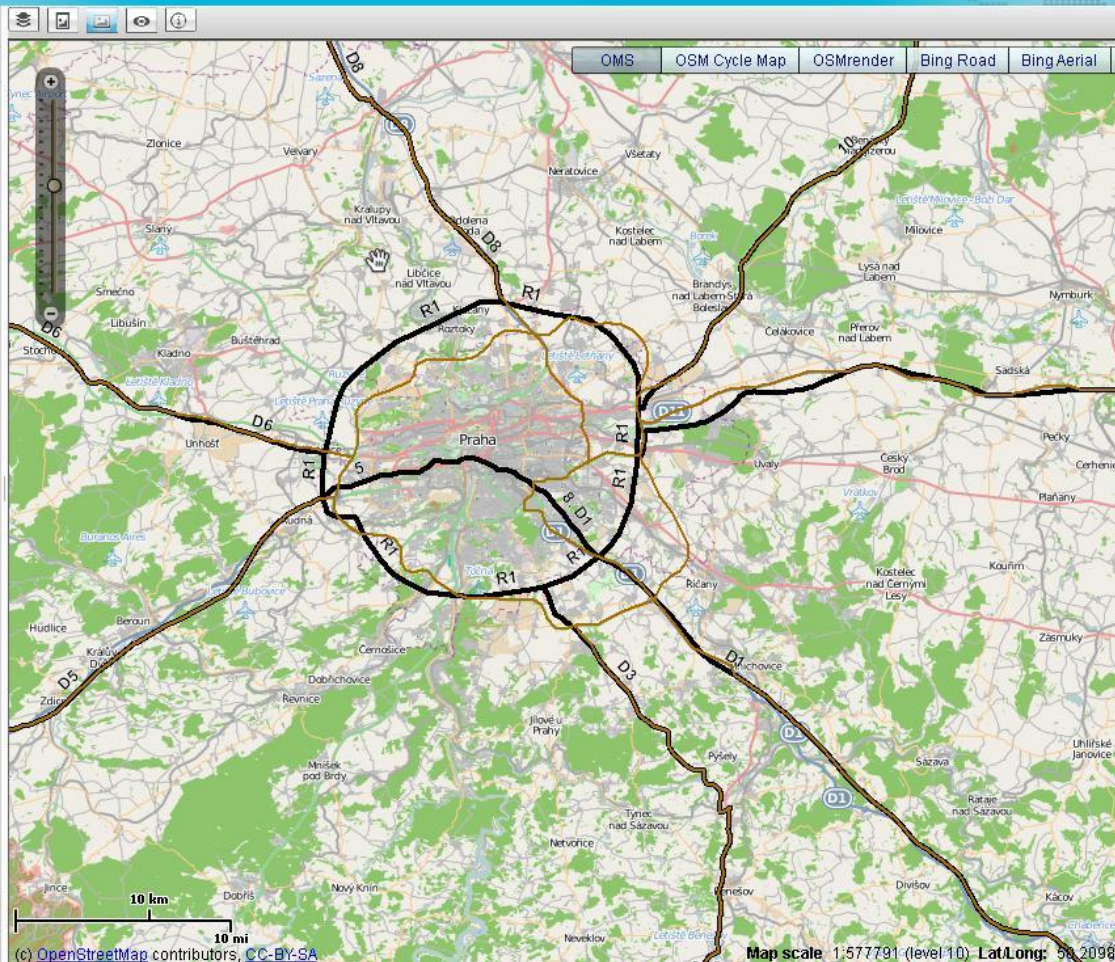
[Contact us](#)

## Layers

- TEN-T Roads Current Status
- TEN-T Rails Current Status
- TEN-T Waterways Current Status
- TEN-T Ports Current Status
- TEN-T Airports Current Status
- TEN-T Roads 2005 - TINA
- TEN-T Rails 2005 - TINA
- TEN-T Waterways 2005 - TINA
- TEN-T Ports 2005 - TINA
- TEN-T Airports 2005 - TINA
- Natura 2000

Priority Projects

Comprehensive Network



# OMC: Section - Filters



European Commission - Coordination of TEN-T Policy

[Back to portal](#) [Help](#) [Contact us](#)

OMC-GIS

Layers

Priority Projects

Comprehensive Network

**Section List** | Import / Export | Geo Modification | WorkFlow

Search for Sections:

Member State:    
 Transport Mode:

Save comment

Current Exercise Information:

**Current exercise :** **Exercise 2010-2011**

|                           | Phase 1 | Phase 2 | Phase 3 |
|---------------------------|---------|---------|---------|
| Technical (completion %): | 100%    | 100%    | 100%    |

Calculated on the : 06/06/2011

Click on one of the phase percentage to make the list of incomplete sections app

Multiple Submission / Validation:

Current List:

Filter by:  FINANCIAL  TECHNICAL   
 Status of data entry:

Multi Modal Platform filter:    
 Select the connected MMP:

Showing 1 to 25 of 229

Section Name | Technical Report(sort by date) | Financie

Map showing road network in Spain. Search overlay is active with the following data:

| ID    | National Road Number | International Rt | Start Node         | End Node            |
|-------|----------------------|------------------|--------------------|---------------------|
| 25314 | A-3                  | E901             | Chiva              | Valencia (J. A-7/A  |
| 25264 | A-3                  | E901             | Madrid (J. N-III/I | La Almarcha         |
| 25258 | A-3                  | E901             | Madrid (J. N-III/I | Madrid (J. N-III/M- |
| 25254 | A-3                  | E901             | Atalaya del Car    | Chiva               |

# OMC: Geographical modifications for Guidelines Review

- A modern planning tool (draft map with no legal value – just for demo)

**OMC-GIS**

European Commission - Coordination of TEN-T Policy

Back to portal | Help | Contact us

Layers

Priority Projects

**Comprehensive Network**

Section List | Import / Export | Geo Modification | WorkFlow

Search for Sections:

Member State: Belgium

Transport Mode: Roads

Save comment

**Current Exercise Information:**

**Current exercise:** Exercise 2010-2011

|                           | Phase 1 | Phase 2 | Phase 3 |
|---------------------------|---------|---------|---------|
| Technical (completion %): | 97.045% | 96.987% | 96.987% |

Calculated on the: 06/06/2011

Click on one of the phase percentage to make the list of incomplete sections appear

**Multiple Submission / Validation:**

Submit Multiple Reports | Validate/Reject Multiple Reports

**Current List:**

Filter by: FINANCIAL | TECHNICAL (selected)

Status of data entry: Choose One

Multi Modal Platform filter: Choose One

Select the connected MMP: Choose One

Showing 1 to 25 of 120

Section Name | Technical Report (sort by date) | Financial

Baalheke (L1.814/1617) | ...

Map scale: 1:2311162 (level 8) | Lat/Long: 50.6930

(c) OpenStreetMap contributors, CC-BY-SA

# Western Balkans Region

Comprehensive Network:  
Roads, ports, rail-road terminals and airports

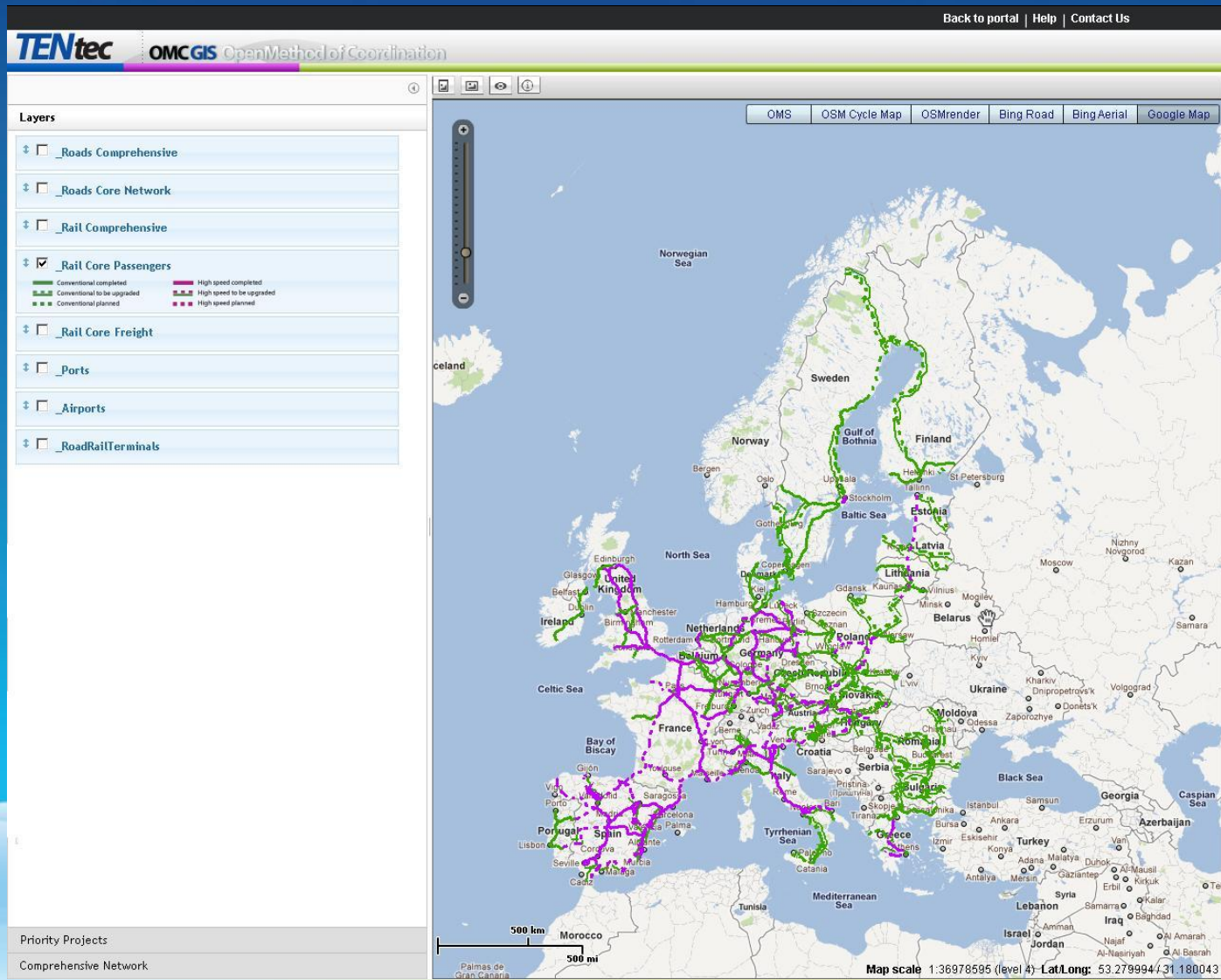


Directorate-General  
for Mobility  
and Transport



Trans-European Networks for Transport (TEN-T)

# TENtec: Possibilities for the Future

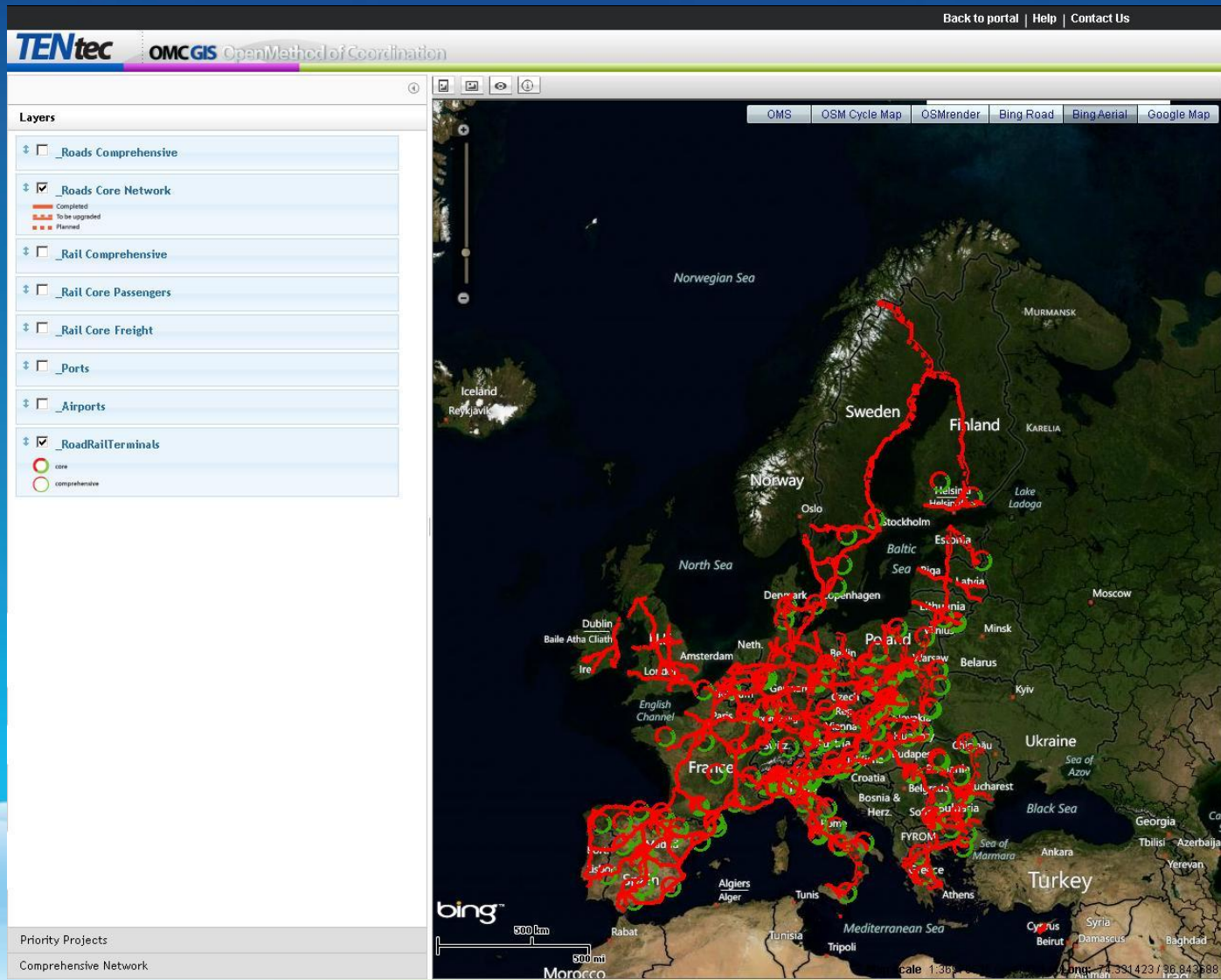


Directorate-General  
for Mobility  
and Transport



Trans-European Networks for Transport (TEN-T)

# TENtec: Possibilities for the Future



# ● Acknowledgements & Links

- **TENtec Team:**  
(European Commission DG-MOVE-B1: “TEN-T & Investment Strategy”,  
Sector: “Open Method of Coordination: TENtec & Innovation”):
  - » Sorin Andrei (GIS coordinator),
  - » Thomas Gascoigne (TENtec developer),
  - » Julien Gerboud (TENtec developer),
  - » Mohammadi Laazzouzi (Content coordinator),
  - » Sébastien Lim (Technical coordinator),
  - » Helmut Morsi (Team leader),
  - » Savvas Pelonis (Web designer).
- **Further information:**
  - » Link to TENtec Portal Production Server:  
[http://ec.europa.eu/transport/infrastructure/tentec\\_en.htm](http://ec.europa.eu/transport/infrastructure/tentec_en.htm)
  - » Link to DG Mobility and Transport (EC DG-MOVE)  
[http://ec.europa.eu/transport/index\\_en.htm](http://ec.europa.eu/transport/index_en.htm)
- **TENtec Techn. Help Desk (managed by the EC DG-MOVE-B1):**
  - » Email : [MOVE-TENTEC@ec.europa.eu](mailto:MOVE-TENTEC@ec.europa.eu)
  - » Phone: +32 (0) 2 2976 -112

**Thank you for your attention!**