

**WORKSHOP on
Innovation in Accessible Transport For All**



Accessible Transport Practice in China

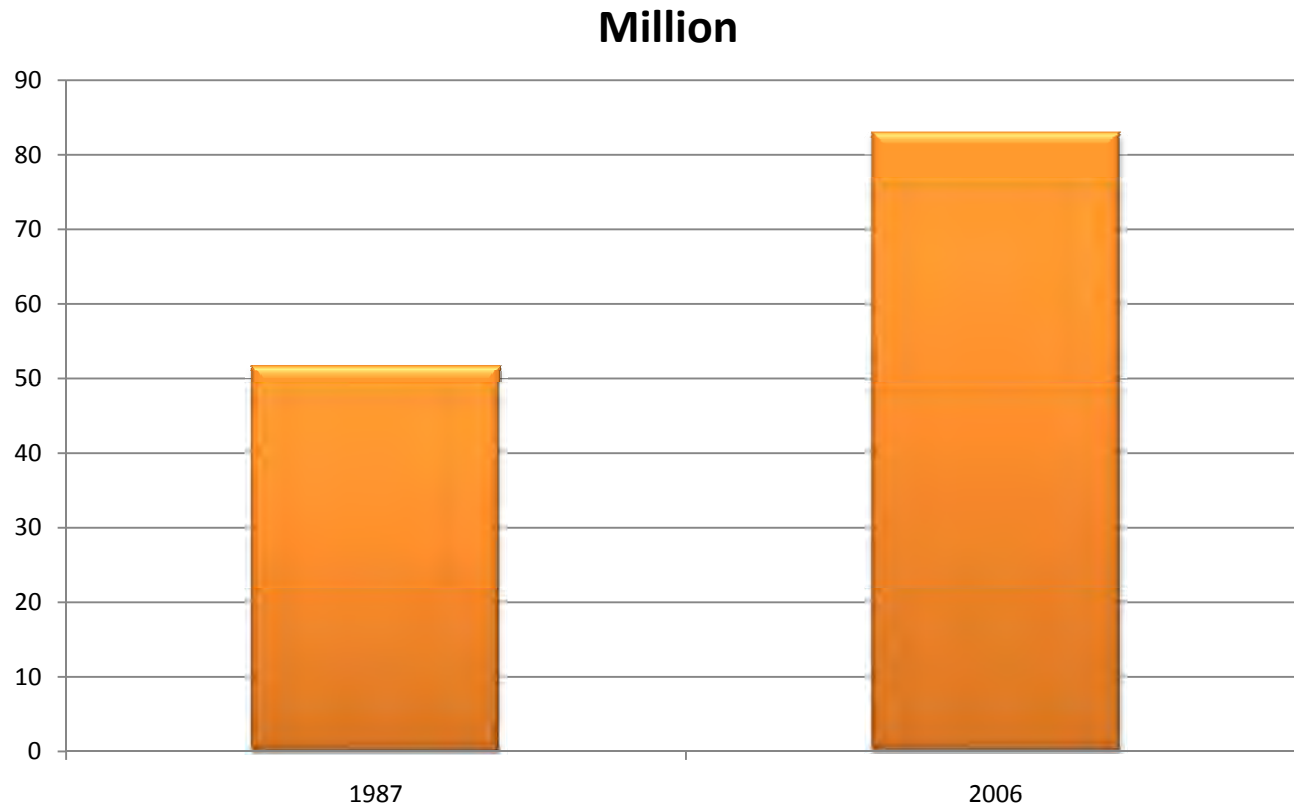
PAN Haixiao Professor

Department of Urban Planning, Tongji University, Shanghai, China

hxpank@online.sh.cn

2010-01-14, Washington, DC , USA

Huge population

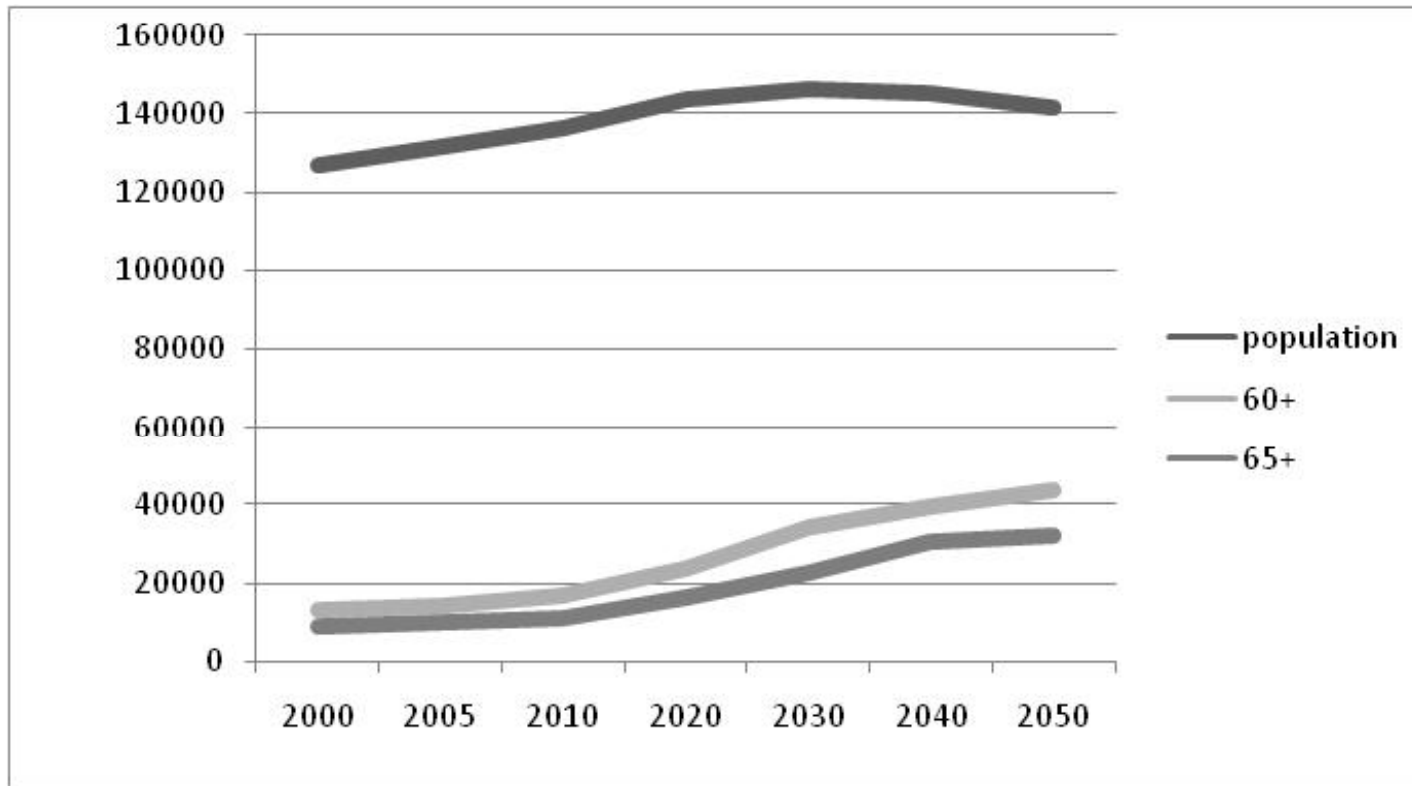


44.1 million with age>60, 75 % of increasing
Decreased in intellectual disability

1.6%(1987)→0.82%(2006)

Fast Increasing

50 years from 10% to 30% only

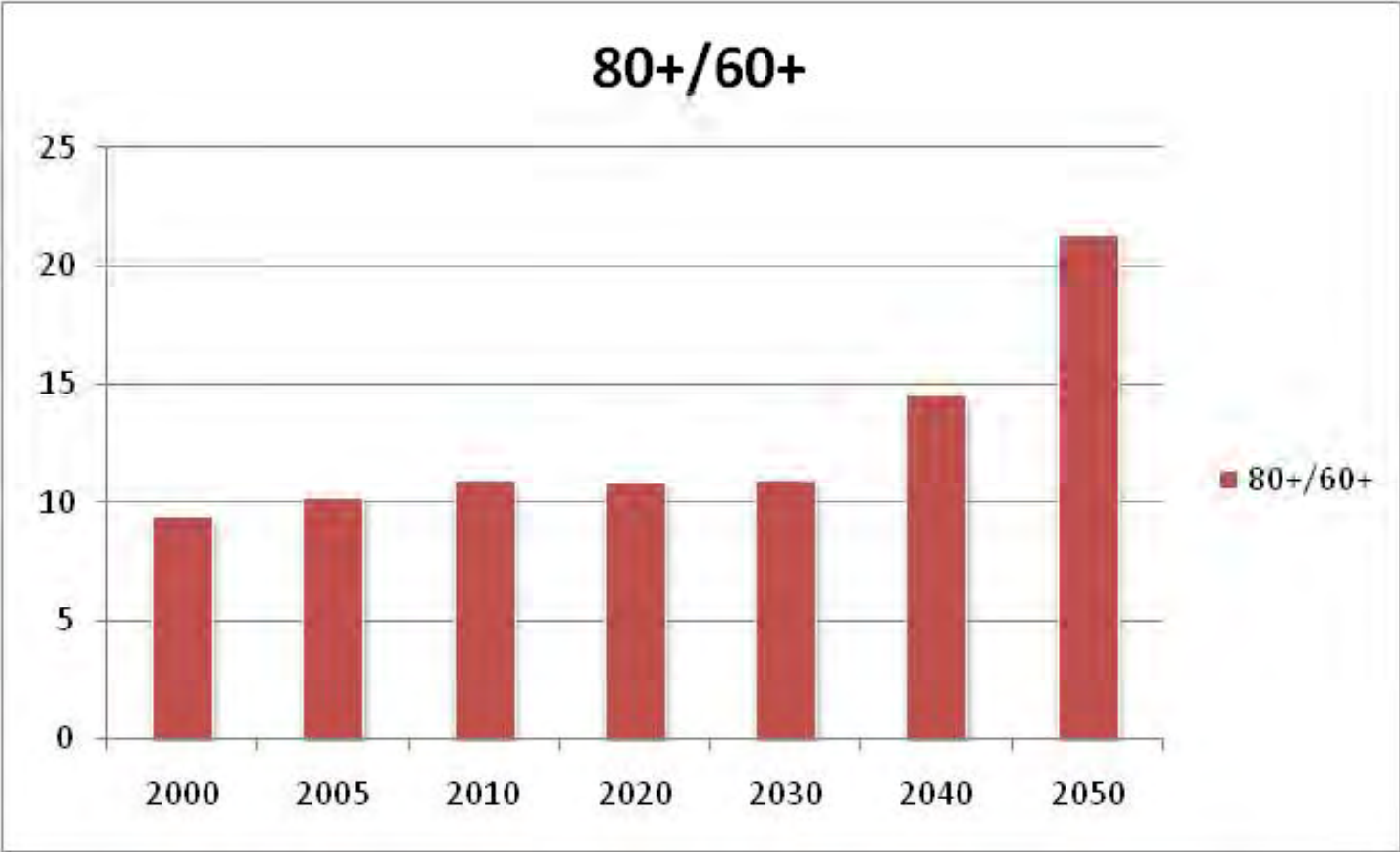


Year 2050:

60+ 435 million

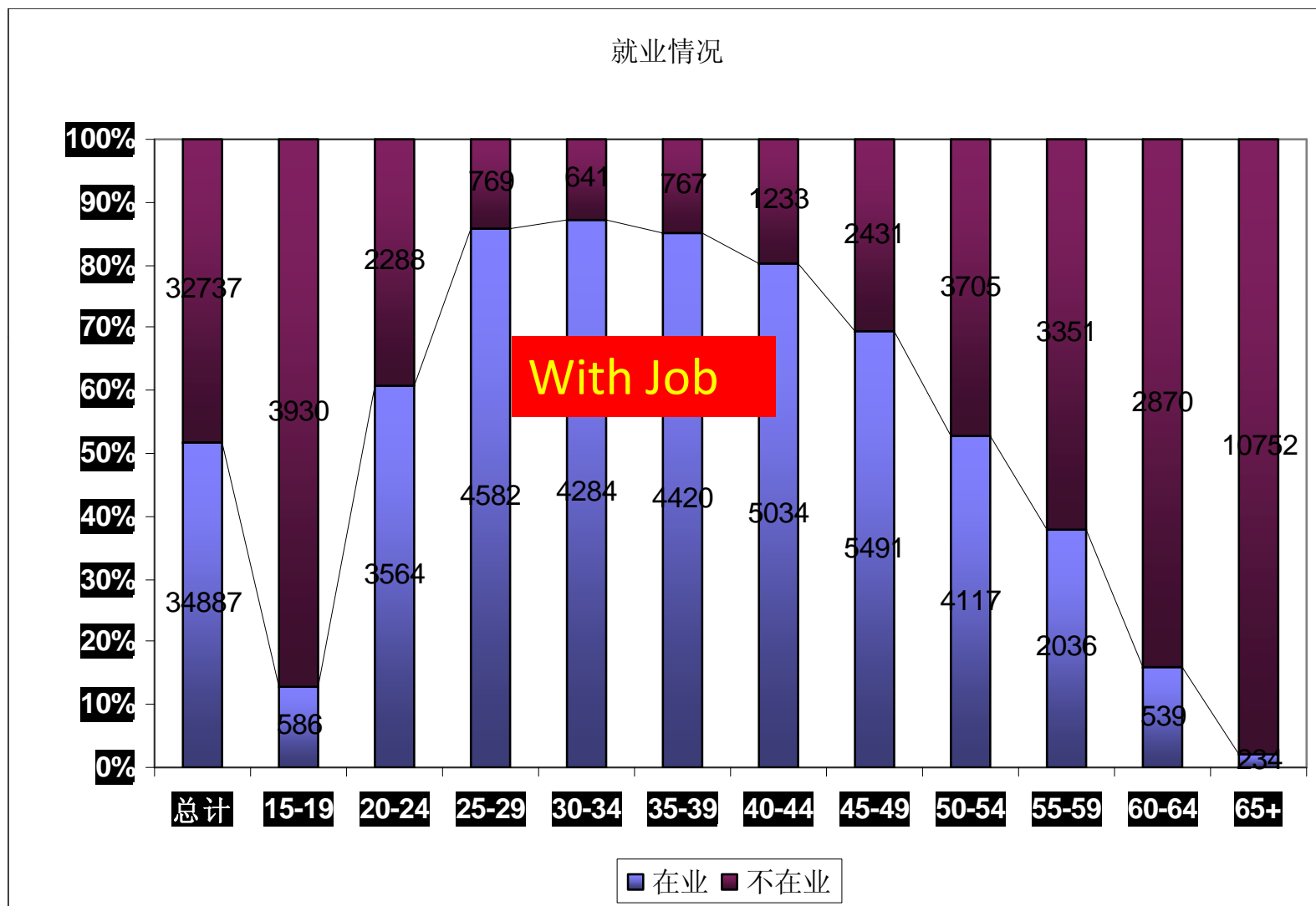
65+ 322 million

Big Share of very Old



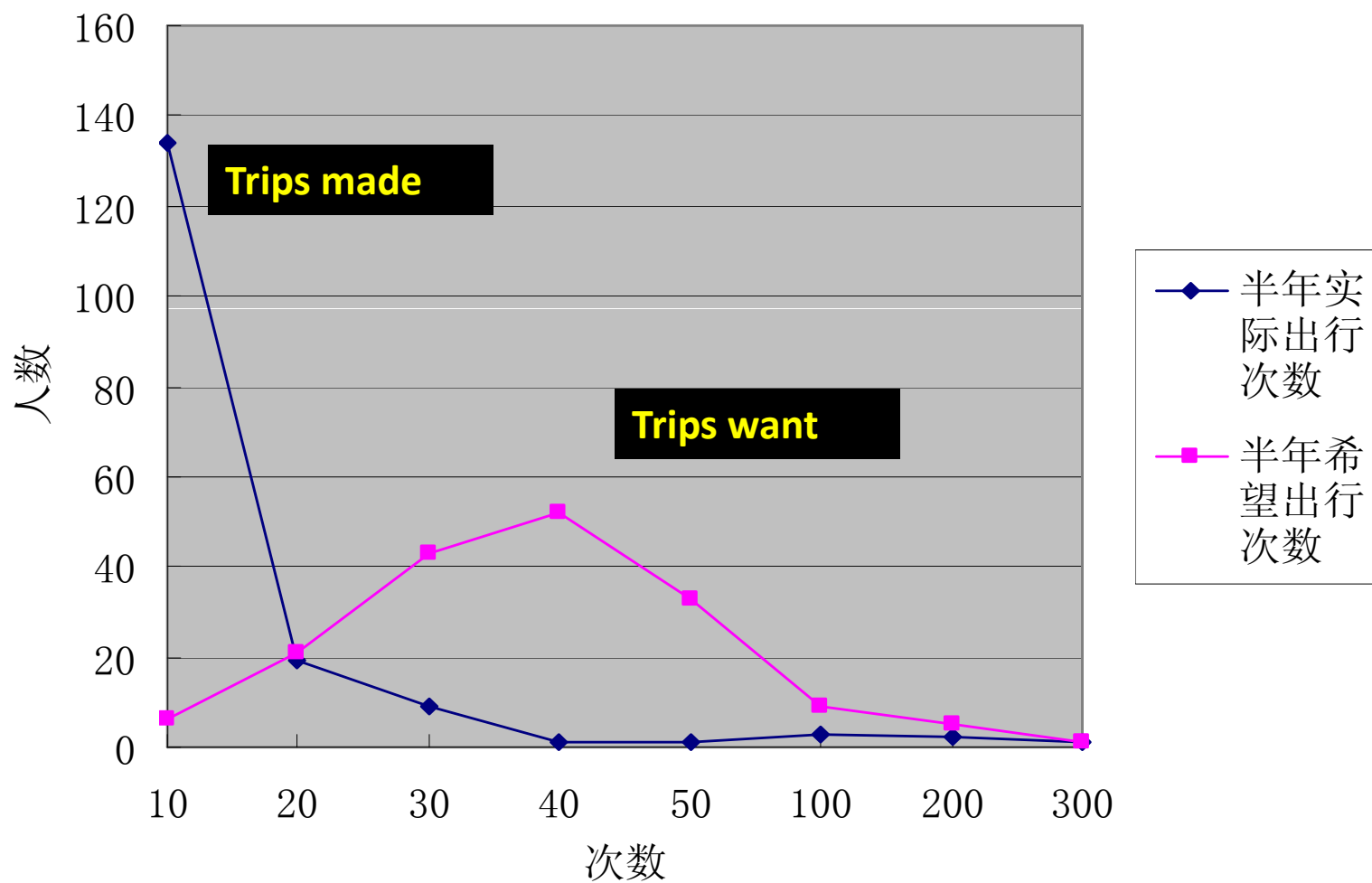
% of 80+ / 60+

Great effort to protect the right of disabled people



Shanghai

残疾人出行次数



National/Local Government Policy and Legislation

1985 Beijing,

Barrier free construction in city center promoted
by Beijing municipal government

1989 MoC

The first technical specification of urban road
and building for disabled people

1989

National government announced the

Protection

Disabled People Act

1996

Rights of the elderly protection act

More focus on hardware construction

1997 : MOC Notification

To do a good job for barrier free facilities construction

Barrier Free Facilities

Road

Large Public Building

Residential Area

During Planning, Design and Construction

Festival for the Elderly



2000

**Airport Passenger Barrier Free Facilities
Construction Specification**

2005 MoRail:

**Barrier Free Construction Specification for
Railway Station**

Fundamental Elements : Barrier Free Construction

Curb ramp

Sidewalk for Blind People

Building Entrance

Barrier Free Passage in Building

Barrier Free Lift(for new public building

Restroom for disabled people

Sign

Shanghai

Age>60:2.8 million

Disabled population: 0.94 million

Great Efforts after 2003

| | Before 2003 | 2003- 2007 |
|--|----------------|---------------|
| Barrier free facilities in public area | 345 | 24805 |
| Hospital | 59 | 678 |
| Shopping Cenetr | 43 | 429 |
| Passenger Station | 0 | 119 |
| | | |
| Sidewalk (Km) | 121.95 | 1913 |
| Curb ramp (km) | 1843 | 41113 |



Road





Metro inside station



Impossible for blind people to find the metro line



Metro Outside





**10,000
Subsidized
Motorized
Vehicle for
Disabled
People Sharing
Bike Route**



Special Taxi, Van Service for Disabled People

**Special ID for heavy wheel
chair people of 20,000**

**Hundreds letter of
appreciation in one year**

Very positive social impact



BUT lack of capacity in vehicle and finance

Free Bus Card for People > 70



Senior Citizen take the bus to buy food and other social activities in weather protected super market



Problem : old bus, emission, compete for road space in rush hour



**Barrier Free Bus, 100
expected next year**



Conference and Research



Challenges

Action in Silo





Hardware Construction, less consideration for management



Resource available, distribution and effectiveness in service

New technology/information

Next Step

2008 Revised Protection Disabled People Act

Create the barrier free environment for the disabled people to participate social activities equally

Barrier free facilities construction

Accessible/transport

Accessing to information

Barrier free in Election

Thank You!