



Disclaimer

This presentation has not been reviewed by SHRP 2 and reflects solely the opinion of the presenter. It does not necessarily reflect the opinion of the National Academies, its units, or any group or individual helping oversee the work of SHRP 2 contractors



The Reliability Focus Area

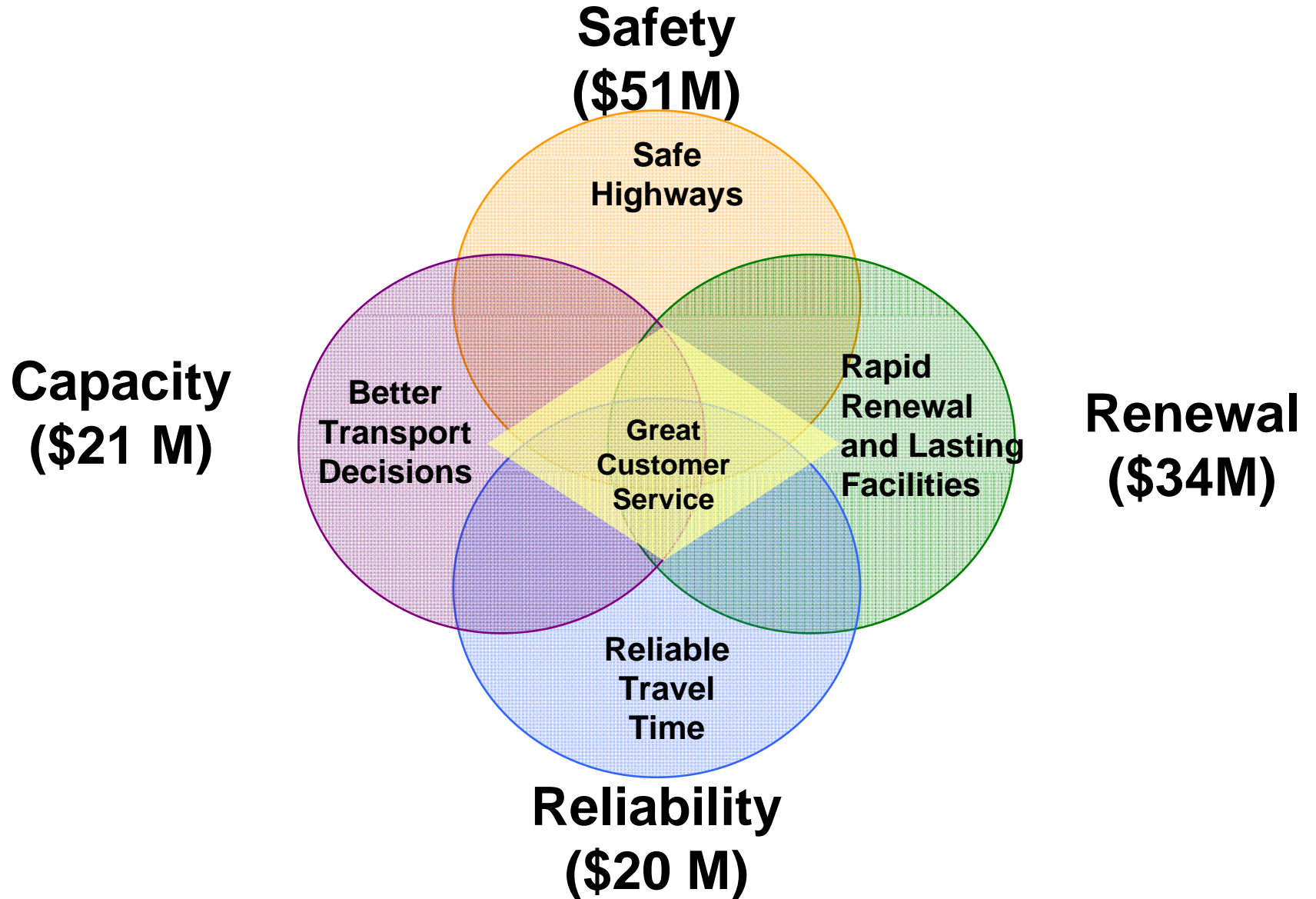
**Vancouver, Canada
October 15-16, 2009**

TRANSPORTATION RESEARCH BOARD
OF THE NATIONAL ACADEMIES

SHRP 2

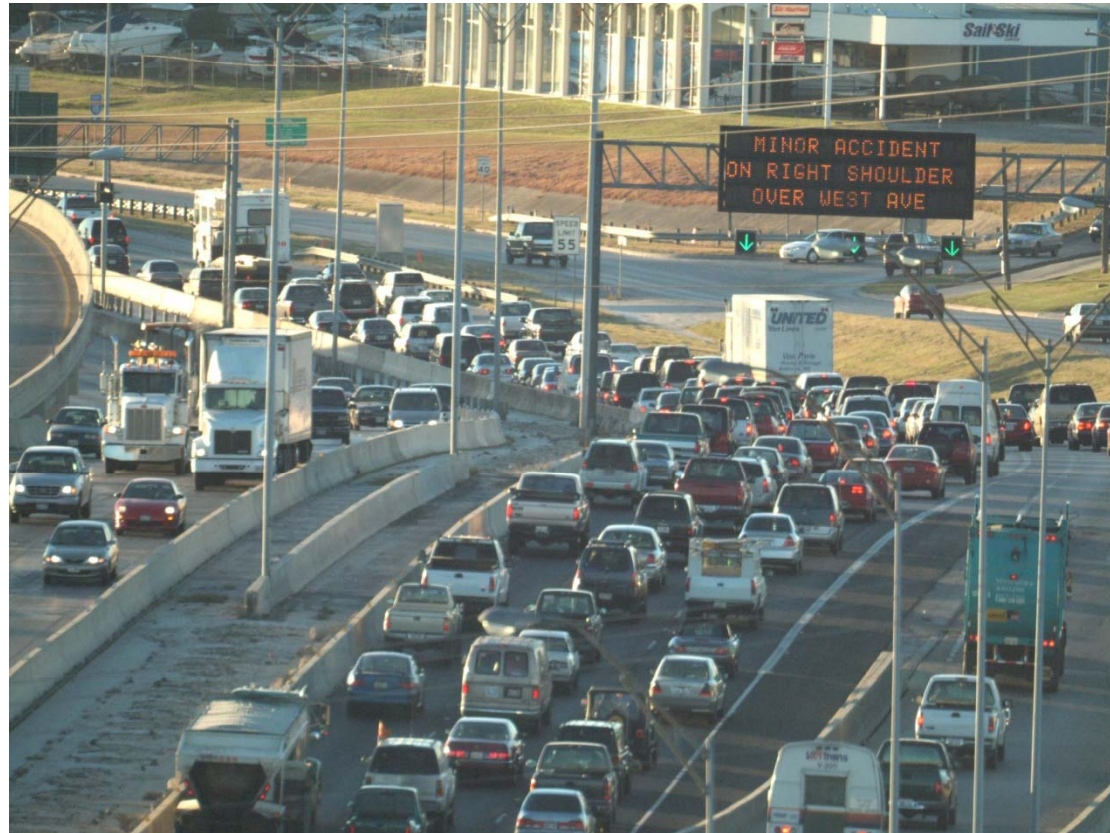
- Short-term, strategic research in four Focus Areas to achieve major advances
- Operates from 2006 to 2013
- Managed by Transportation Research Board, a unit of the National Academy of Sciences
- Funded through a Collaborative Agreement with the Federal Highway Administration

FOUR FOCUS AREAS



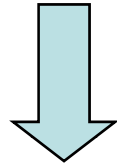
Addressing Traffic Congestion

- The SHRP 2 Reliability and Capacity focus areas were planned to address different aspects of the traffic congestion issue
- They might be thought of as two sides of a coin

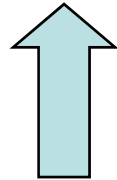


Reliability Research

Tackles *nonrecurring* congestion resulting from incidents, weather, work zones, special events, etc.



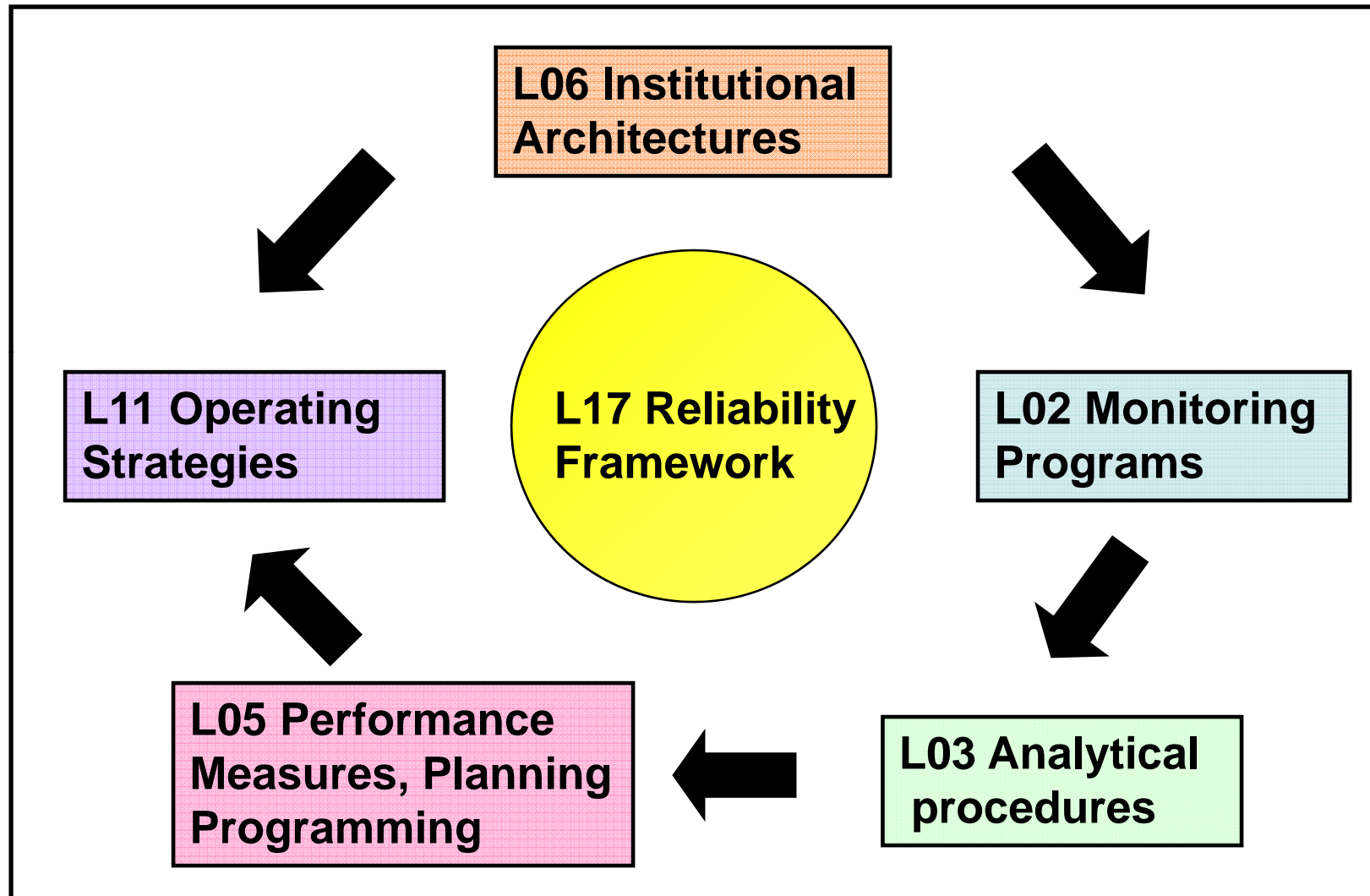
CONGESTION



CAPACITY RESEARCH

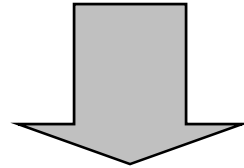
Tackles *recurring* congestion from inadequate base capacity

Some Key SHRP 2 Reliability Research Projects



Valuing Travel Time Reliability

- Project L11: Evaluating Alternative Operations Strategies
- Project L14: Effectiveness of Different Approaches to Disseminating Traveler Information on Travel Time Reliability



COST-BENEFIT ANALYSIS