

# Australia

Total CO2 from Fuel Combustion including International Air and Maritime (2005)

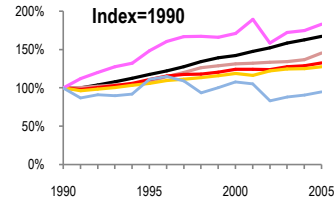
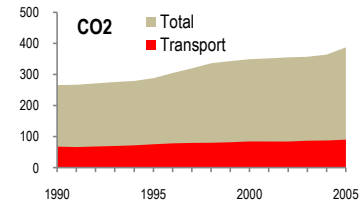
EU

N.Am

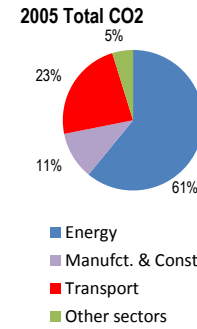
Asia-Pac

Other ITF

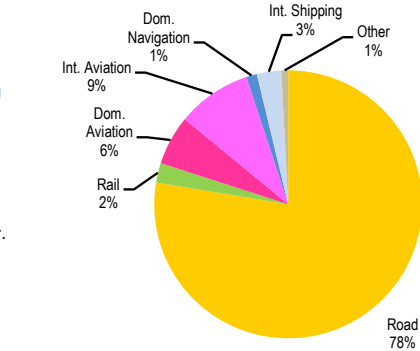
Change 1990-2005	Mt	2005	T per capita	2005	Kg/\$2000 PPP	2005
CO2	46%	387.56	22%	18.93	13%	0.63
Transport CO2	33%	90.45	11%	4.42	21%	0.15
Road CO2	28%	70.2	7%	3.43	24%	0.11
Aviation CO2	83%	13.55	54%	0.66	10%	0.02
Shipping CO2	5%	3.82	20%	0.19	43%	0.01



— GDP  
— Mt CO2  
— Transport CO2  
— Road CO2  
— Aviation CO2  
— Shipping CO2



## 2005 Transport CO2



Transport and the Economy	1990	1995	2000	2001	2002	2003	2004	2005	1990-2005	% per year
Population (millions)	17.17	18.19	19.27	19.53	19.75	19.98	20.20	20.47	19%	1.18%
GDP (billion 2000 US\$, PPP)	368.85	433.35	524.59	544.35	561.51	584.26	599.90	616.75	67%	3.49%
Road passenger km (million pkm)	218378	237241	260398	259671	269220	272497	283515	289157	32%	1.89%
Road freight tonne km (million tkm)	178239	212890	270070	277410	300360	315210	327890	338826	90%	4.38%
Road pkm/capita	12719	13042	13513	13296	13631	13638	14035	14126	11%	0.70%
Road freight tkm/\$ of GDP	0.48	0.49	0.51	0.51	0.53	0.54	0.55	0.55	14%	0.86%
Motorisation (Cars/1000 inhabitants)	447	476	506	504	511	519	526	532	19%	1.17%
<b>CO2 Emissions</b>										
IEA CO2 from fuel combustion (Mt CO2)*	266.04	288.43	349.45	352.21	355.31	357.22	364.24	387.56	46%	2.54%
IEA transport CO2 (Mt CO2)*	68.10	75.67	84.74	84.56	84.46	87.06	87.78	90.45	33%	1.91%
<i>Transport as a percentage of total</i>	25.6%	26.2%	24.2%	24.0%	23.8%	24.4%	24.1%	23.3%		
Road	54.91	58.25	65.40	63.92	67.13	68.51	68.80	70.20	28%	1.65%
Rail	1.74	1.55	1.82	1.84	1.51	1.55	1.66	2.13	22%	1.36%
Domestic Aviation	3.10	5.24	5.50	6.05	5.45	5.88	6.00	5.43	75%	3.81%
International Aviation	4.30	5.76	7.16	7.97	6.30	6.87	6.93	8.12	89%	4.33%
Domestic Navigation	1.99	1.82	1.51	1.79	1.07	1.27	1.04	1.16	-42%	-3.53%
International Maritime	2.04	2.66	2.83	2.45	2.28	2.28	2.62	2.66	30%	1.78%
Other Transport	0.02	0.39	0.52	0.54	0.72	0.70	0.73	0.75	3650%	27.33%
<b>GHG Emissions</b>										
UNFCCC GHG emissions (Mt CO2 eq.)*	424.73	453.27	507.80	519.57	520.87	523.28	532.44	535.26	26%	1.55%
UNFCCC Transport GHG (Mt CO2 eq.)*	68.35	76.61	84.75	83.67	84.49	84.21	88.31	90.25	32%	1.87%
<i>Transport as a percentage of total</i>	16.1%	16.9%	16.7%	16.1%	16.2%	16.1%	16.6%	16.9%		

\*includes international aviation and shipping