

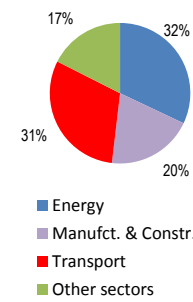
Austria

Total CO2 from Fuel Combustion including International Air and Maritime (2005)

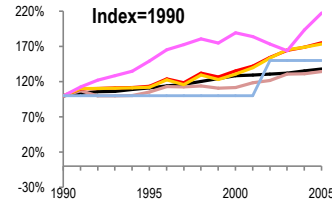
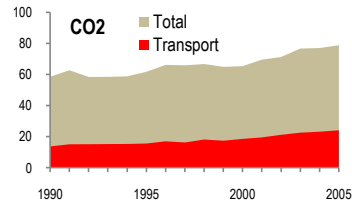
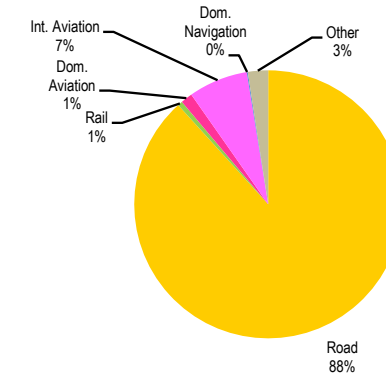
EU	N.Am	Asia-Pac	Other ITF
----	------	----------	-----------

78.9 Mt					
Change 1990-2005*	Mt	2005	T per capita	2005	Kg/\$2000 PPP
CO2	35%	78.91	26%	9.59	3%
Transport CO2	76%	24.13	64%	2.93	27%
Road CO2	74%	21.3	62%	2.59	26%
Aviation CO2	118%	2.07	103%	0.25	58%
Shipping CO2	50%	0.03	40%	0.00	8%

2005 Total CO2



2005 Transport CO2



Transport and the Economy	1990	1995	2000	2001	2002	2003	2004	2005	1990-2005	% per year
Population (millions)	7.68	7.95	8.01	8.04	8.08	8.12	8.18	8.23	7%	0.46%
GDP (billion 2000 US\$, PPP)	178.87	199.11	230.12	232.03	234.02	236.57	242.35	247.30	38%	2.18%
Road passenger km (million pkm)	67722	70880
Road freight tonne km (million tkm)	29730	37406	43763	45079	45766	45049	44628	43486	46%	2.57%
Road pkm/capita	8818	8916
Road freight tkm/\$ of GDP	0.17	0.19	0.19	0.19	0.20	0.19	0.18	0.18	6%	0.38%
Motorisation (Cars/1000 inhabitants)	389	452	511	520	493	499	502	505	30%	1.75%
CO2 Emissions										
IEA CO2 from fuel combustion (Mt CO2)*	58.62	61.81	65.42	69.59	71.31	76.74	77.05	78.91	35%	2.00%
IEA transport CO2 (Mt CO2)*	13.74	15.63	18.60	19.56	21.23	22.59	23.23	24.13	76%	3.83%
<i>Transport as a percentage of total</i>	23.4%	25.3%	28.4%	28.1%	29.8%	29.4%	30.1%	30.6%		
Road	12.26	13.78	16.05	17.13	18.85	20.28	20.73	21.30	74%	3.75%
Rail	0.18	0.14	0.14	0.13	0.14	0.14	0.14	0.14	-22%	-1.66%
Domestic Aviation	0.10	0.08	0.11	0.12	0.12	0.25	0.30	0.34	240%	8.50%
International Aviation	0.85	1.34	1.69	1.63	1.53	1.31	1.54	1.73	104%	4.85%
Domestic Navigation	0.02	0.02	0.02	0.02	0.03	0.03	0.03	0.03	50%	2.74%
International Maritime
Other Transport	0.33	0.27	0.59	0.53	0.56	0.58	0.49	0.59	79%	3.95%
GHG Emissions										
UNFCCC GHG emissions (Mt CO2 eq.)*	79.95	81.64	82.81	86.70	88.22	94.27	92.73	95.03	19%	1.16%
UNFCCC Transport GHG (Mt CO2 eq.)*	13.62	16.20	19.75	20.86	22.63	24.33	25.15	26.07	91%	4.42%
<i>Transport as a percentage of total</i>	17.0%	19.8%	23.8%	24.1%	25.7%	25.8%	27.1%	27.4%		

*includes international aviation and shipping