

Azerbaijan

Total CO2 from Fuel Combustion including International Air and Maritime (2005)

EU

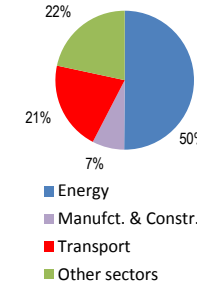
N.Am

Asia-Pac

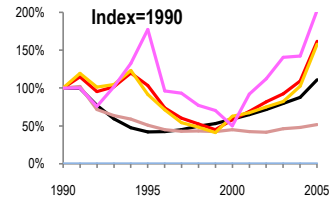
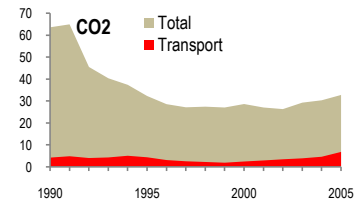
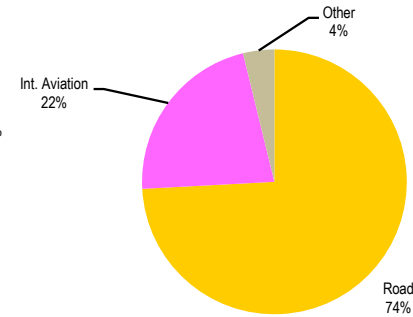
Other ITF

Change 1990-2005*	Mt	2005	T per capita	2005	Kg/\$2000 PPP	2005
CO2	48%	32.78	56%	3.91	53%	0.88
Transport CO2	61%	6.81	38%	0.81	46%	0.18
Road CO2	58%	5.05	35%	0.60	43%	0.13
Aviation CO2	103%	1.5	73%	0.18	83%	0.04
Shipping CO2		0		0.00		0.00

2005 Total CO2



2005 Transport CO2



Transport and the Economy	1990	1995	2000	2001	2002	2003	2004	2005	1990-2005	% per year
Population (millions)	7.16	7.69	8.05	8.11	8.17	8.23	8.31	8.39	17%	1.06%
GDP (billion 2000 US\$, PPP)	33.82	14.16	19.92	21.89	24.21	26.92	29.66	37.44	11%	0.68%
Road passenger km (million pkm)	7480	4664	9153	9442	9603	9861	10279	10892	46%	2.54%
Road freight tonne km (million tkm)	43716	5271	10822	12894	14409	15834	16510	19037	-56%	-5.39%
Road pkm/capita	1045	607	1137	1164	1175	1198	1237	1298	24%	1.46%
Road freight tkm/\$ of GDP)	1.29	0.37	0.54	0.59	0.60	0.59	0.56	0.51	-61%	-6.03%
Motorisation (Cars/1000 inhabitants)	36	36	41	42	43	49	53	57	57%	3.06%
CO2 Emissions										
IEA CO2 from fuel combustion (Mt CO2)*	63.64	32.31	28.65	27.07	26.34	29.28	30.35	32.78	-48%	-4.33%
IEA transport CO2 (Mt CO2)*	4.22	4.36	2.44	2.91	3.45	3.89	4.61	6.81	61%	3.24%
<i>Transport as a percentage of total</i>	6.6%	13.5%	8.5%	10.7%	13.1%	13.3%	15.2%	20.8%		
Road	3.20	2.92	2.00	2.15	2.39	2.63	3.27	5.05	58%	3.09%
Rail	0.00	0.04	0.00	0.00	0.00	0.00	0.00	0.00
Domestic Aviation
International Aviation	0.74	1.31	0.37	0.68	0.83	1.04	1.05	1.50	103%	4.82%
Domestic Navigation
International Maritime
Other Transport	0.28	0.09	0.07	0.08	0.23	0.22	0.29	0.26	-7%	-0.49%
GHG Emissions										
UNFCCC GHG emissions (Mt CO2 eq.)*
UNFCCC Transport GHG (Mt CO2 eq.)*
<i>Transport as a percentage of total</i>

*includes international aviation and shipping