

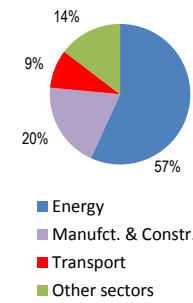
Belarus

Total CO2 from Fuel Combustion including International Air and Maritime (2005)

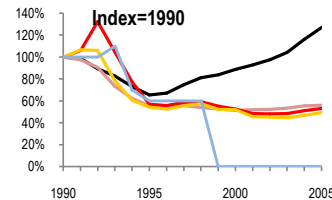
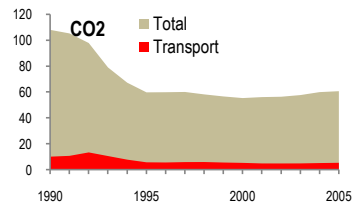
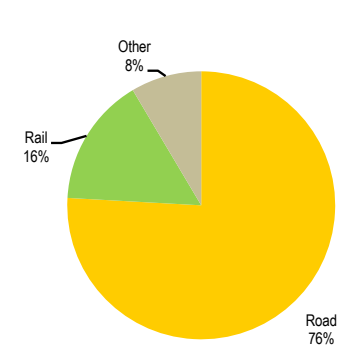
EU	N.Am	Asia-Pac	Other ITF
----	------	----------	-----------

Change 1990-2005*	Mt	2005	T per capita	2005	Kg/\$2000 PPP	2005
CO2	44%	60.71	41%	6.21	56%	0.88
Transport CO2	47%	5.39	45%	0.55	58%	0.08
Road CO2	51%	4.09	49%	0.42	61%	0.06
Aviation CO2		0		0.00		0.00
Shipping CO2	100%	0	100%	0.00	100%	0.00

2005 Total CO2



2005 Transport CO2



— GDP
— Mt CO2
— Transport CO2
— Road CO2
— Shipping CO2

Transport and the Economy	1990	1995	2000	2001	2002	2003	2004	2005	1990-2005	% per year
Population (millions)	10.19	10.19	10.01	9.97	9.93	9.87	9.82	9.78	-4%	-0.27%
GDP (billion 2000 US\$, PPP)	54.17	35.37	48.03	50.30	52.84	56.56	63.04	68.86	27%	1.61%
Road passenger km (million pkm)	19787	9308	9235	9493	9090	9800	9747
Road freight tonne km (million tkm)	99596	35182	40433	38481	42173	46217	49626	51092	-49%	-4.35%
Road pkm/capita	1942	913	923	952	915	993	993
Road freight tkm/\$ of GDP	1.84	0.99	0.84	0.77	0.80	0.82	0.79	0.74	-60%	-5.87%
Motorisation (Cars/1000 inhabitants)	59	92	142	147	156	168	174	181	205%	7.72%
CO2 Emissions										
IEA CO2 from fuel combustion (Mt CO2)*	108.05	59.80	55.39	56.13	56.41	57.70	59.98	60.71	-44%	-3.77%
IEA transport CO2 (Mt CO2)*	10.14	5.76	5.33	4.91	4.88	4.92	5.18	5.39	-47%	-4.13%
<i>Transport as a percentage of total</i>	9.4%	9.6%	9.6%	8.7%	8.7%	8.5%	8.6%	8.9%		
Road	8.29	4.49	4.30	3.77	3.74	3.70	3.87	4.09	-51%	-4.60%
Rail	1.59	1.11	0.73	0.82	0.71	0.73	0.77	0.84	-47%	-4.16%
Domestic Aviation
International Aviation
Domestic Navigation	0.10	0.06	0.00	0.00	0.00	0.00	0.00	0.00	-100%	-99.99%
International Maritime
Other Transport	0.16	0.10	0.30	0.32	0.43	0.49	0.54	0.46	187%	7.29%
GHG Emissions										
UNFCCC GHG emissions (Mt CO2 eq.)*	132.97	73.15	69.99	68.39	68.42	70.03	74.57	75.81	-43%	-3.68%
UNFCCC Transport GHG (Mt CO2 eq.)*	18.60	5.03	3.29	3.30	4.41	4.12	4.66	4.65	-75%	-8.83%
<i>Transport as a percentage of total</i>	14.0%	6.9%	4.7%	4.8%	6.5%	5.9%	6.2%	6.1%		

*includes international aviation and shipping