

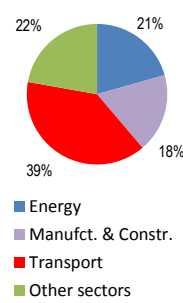
Belgium

Total CO2 from Fuel Combustion including International Air and Maritime (2005)

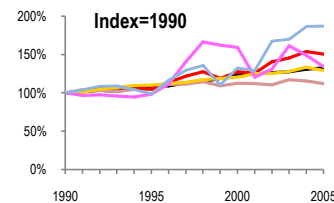
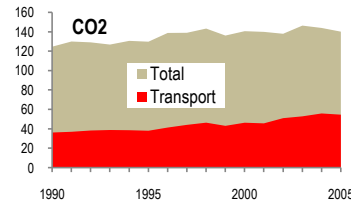
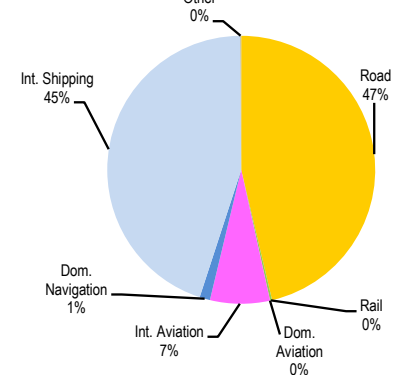
U	N.Am	Asia-Pac	Other ITF
---	------	----------	-----------

140.2 Mt	Change 1990-2005*	Mt	2005	T per capita	2005	Kg/\$2000 PPP	2005
CO2	12%		140.17	7%	13.39	15%	0.48
Transport CO2	51%		54.69	43%	5.22	13%	0.19
Road CO2	29%		25.32	23%	2.42	3%	0.09
Aviation CO2	34%		3.95	28%	0.38	1%	0.01
Shipping CO2	87%		25.22	78%	2.41	41%	0.09

2005 Total CO2



2005 Transport CO2



— GDP
— Mt CO2
— Transport CO2
— Road CO2
— Aviation CO2
— Shipping CO2

Transport and the Economy	1990	1995	2000	2001	2002	2003	2004	2005	1990-2005	% per year
Population (millions)	9.97	10.14	10.25	10.28	10.33	10.37	10.42	10.47	5%	0.33%
GDP (billion 2000 US\$, PPP)	221.28	239.48	273.16	276.02	280.17	282.73	290.05	293.67	33%	1.90%
Road passenger km (million pkm)	92158	104228	119400	121470	123960	124730	126800	126960	38%	2.16%
Road freight tonne km (million tkm)	46875	61528	67634	69514	70470	67655	65561	62124	33%	1.90%
Road pkm/capita	9244	10279	11649	11816	12000	12028	12169	12126	31%	1.83%
Road freight tkm/\$ of GDP	0.21	0.26	0.25	0.25	0.25	0.24	0.23	0.21	0%	-0.01%
Motorisation (Cars/1000 inhabitants)	383	421	456	461	463	465	468	470	23%	1.38%
CO2 Emissions										
IEA CO2 from fuel combustion (Mt CO2)*	124.74	129.86	140.68	139.95	138.01	146.42	143.99	140.17	12%	0.78%
IEA transport CO2 (Mt CO2)*	36.32	38.14	46.41	45.73	51.11	52.97	55.94	54.69	51%	2.77%
<i>Transport as a percentage of total</i>	29.1%	29.4%	33.0%	32.7%	37.0%	36.2%	38.8%	39.0%		
Road	19.60	21.59	23.66	24.54	24.58	25.14	26.21	25.32	29%	1.72%
Rail	0.22	0.24	0.19	0.17	0.10	0.13	0.13	0.13	-41%	-3.45%
Domestic Aviation	0.02	0.20	0.15	0.12	0.05	0.23	0.22	0.01	-50%	-4.52%
International Aviation	2.92	2.70	4.54	3.43	3.80	4.52	4.16	3.94	35%	2.02%
Domestic Navigation	0.41	0.81	0.68	0.59	0.67	0.82	0.37	0.69	68%	3.53%
International Maritime	13.05	12.45	17.14	16.77	21.87	22.06	24.79	24.53	88%	4.30%
Other Transport	0.10	0.15	0.05	0.11	0.04	0.07	0.06	0.07	-30%	-2.35%
GHG Emissions										
UNFCCC GHG emissions (Mt CO2 eq.)*	162.90	168.69	169.12	167.36	175.63	174.83	175.63	171.16	5%	0.33%
UNFCCC Transport GHG (Mt CO2 eq.)*	37.53	39.01	46.36	45.84	56.34	53.10	55.29	53.73	43%	2.42%
<i>Transport as a percentage of total</i>	23.0%	23.1%	27.4%	27.4%	32.1%	30.4%	31.5%	31.4%		

*includes international aviation and shipping