

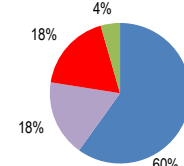
# Bulgaria

Total CO2 from Fuel Combustion including International Air and Maritime (2005)

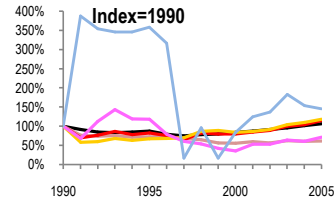
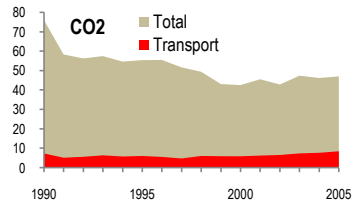
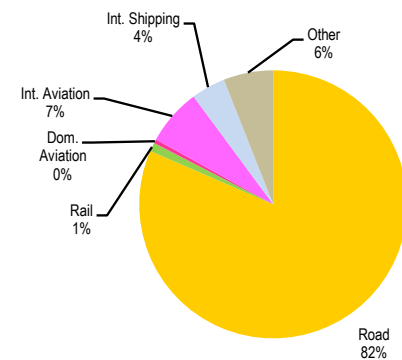
|    |      |          |           |
|----|------|----------|-----------|
| EU | N.Am | Asia-Pac | Other ITF |
|----|------|----------|-----------|

| Change 1990-2005* | Mt  | 2005  | T per capita | 2005 | Kg/\$2000 PPP | 2005 |
|-------------------|-----|-------|--------------|------|---------------|------|
| CO2               | 38% | 47.05 | 30%          | 6.08 | 42%           | 0.76 |
| Transport CO2     | 15% | 8.49  | 29%          | 1.10 | 7%            | 0.14 |
| Road CO2          | 18% | 6.92  | 33%          | 0.89 | 11%           | 0.11 |
| Aviation CO2      | 29% | 0.62  | 20%          | 0.08 | 33%           | 0.01 |
| Shipping CO2      | 46% | 0.35  | 64%          | 0.05 | 36%           | 0.01 |

2005 Total CO2



2005 Transport CO2



— GDP  
— Mt CO2  
— Transport CO2  
— Road CO2  
— Aviation CO2  
— Shipping CO2

| Transport and the Economy                 | 1990   | 1995  | 2000  | 2001  | 2002  | 2003  | 2004  | 2005  | 1990-2005 | % per year |
|---|--------|-------|-------|-------|-------|-------|-------|-------|-----------|------------|
| Population (millions)                     | 8.72   | 8.40  | 8.06  | 7.91  | 7.87  | 7.82  | 7.78  | 7.74  | -11%      | -0.79%     |
| GDP (billion 2000 US\$, PPP)              | 58.18  | 50.96 | 48.88 | 50.88 | 53.37 | 55.78 | 58.95 | 62.20 | 7%        | 0.45%      |
| Road passenger km (million pkm)           | 30430  | 11508 | 13879 | 14510 | 15966 | 12954 | 11093 | 11355 | -63%      | -6.36%     |
| Road freight tonne km (million tkm)       | 30143  | 28300 | 9374  | 8918  | 9415  | 10926 | 11423 | 12092 | -60%      | -5.91%     |
| Road pkm/capita                           | 3490   | 1370  | 1722  | 1834  | 2029  | 1657  | 1426  | 1467  | -58%      | -5.61%     |
| Road freight tkm/\$ of GDP                | 0.52   | 0.56  | 0.19  | 0.18  | 0.18  | 0.20  | 0.19  | 0.19  | -62%      | -6.33%     |
| Motorisation (Cars/1000 inhabitants)      | 151    | 196   | 247   | 264   | 276   | 295   | 313   | 328   | 117%      | 5.30%      |
| <b>CO2 Emissions</b>                      |        |       |       |       |       |       |       |       |           |            |
| IEA CO2 from fuel combustion (Mt CO2)*    | 76.12  | 55.41 | 42.57 | 45.58 | 42.88 | 47.42 | 46.24 | 47.05 | -38%      | -3.16%     |
| IEA transport CO2 (Mt CO2)*               | 7.40   | 6.09  | 5.92  | 6.27  | 6.59  | 7.40  | 7.72  | 8.49  | 15%       | 0.92%      |
| <i>Transport as a percentage of total</i> | 9.7%   | 11.0% | 13.9% | 13.8% | 15.4% | 15.6% | 16.7% | 18.0% |           |            |
| Road                                      | 5.84   | 3.96  | 4.90  | 5.08  | 5.37  | 6.10  | 6.41  | 6.92  | 18%       | 1.14%      |
| Rail                                      | 0.33   | 0.24  | 0.12  | 0.10  | 0.10  | 0.09  | 0.09  | 0.09  | -73%      | -8.30%     |
| Domestic Aviation                         | 0.14   | 0.01  | 0.06  | 0.14  | 0.08  | 0.07  | 0.06  | 0.04  | -71%      | -8.01%     |
| International Aviation                    | 0.73   | 1.02  | 0.25  | 0.32  | 0.38  | 0.49  | 0.47  | 0.58  | -21%      | -1.52%     |
| Domestic Navigation                       | 0.06   | 0.01  | 0.00  | 0.00  | 0.00  | 0.00  | 0.00  | 0.00  | -100%     | -99.99%    |
| International Maritime                    | 0.18   | 0.85  | 0.20  | 0.30  | 0.33  | 0.44  | 0.37  | 0.35  | 94%       | 4.53%      |
| Other Transport                           | 0.12   | 0.00  | 0.39  | 0.33  | 0.33  | 0.21  | 0.32  | 0.51  | 325%      | 10.13%     |
| <b>GHG Emissions</b>                      |        |       |       |       |       |       |       |       |           |            |
| UNFCCC GHG emissions (Mt CO2 eq.)*        | 118.39 | 88.54 | 67.67 | 68.20 | 65.21 | 70.69 | 69.88 | 70.82 | -40%      | -3.37%     |
| UNFCCC Transport GHG (Mt CO2 eq.)*        | 12.78  | 8.37  | 6.44  | 6.80  | 7.14  | 8.12  | 8.27  | 9.03  | -29%      | -2.28%     |
| <i>Transport as a percentage of total</i> | 10.8%  | 9.5%  | 9.5%  | 10.0% | 11.0% | 11.5% | 11.8% | 12.8% |           |            |

\*includes international aviation and shipping