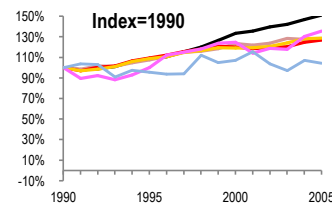
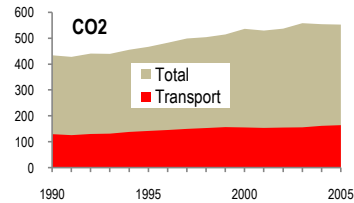
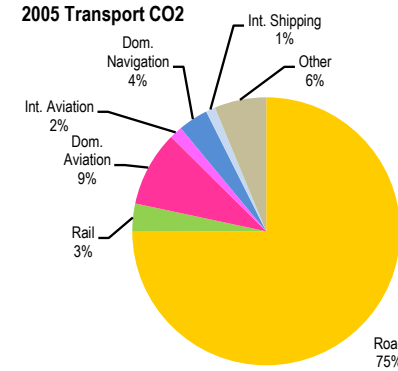
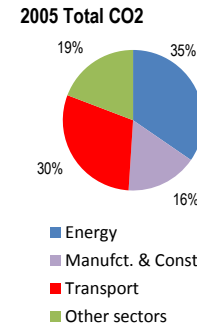


Canada

Total CO2 from Fuel Combustion including International Air and Maritime (2005)

EU	N. Am.	Asia-Pac	Other ITF
----	---------------	----------	-----------

Change 1990-2005*	Mt	2005	553 Mt	T per capita	2005	Kg/\$2000 PPP	2005
CO2	27%	553.02		9%	17.14	16%	0.56
Transport CO2	27%	164.66		9%	5.10	16%	0.17
Road CO2	29%	123.42		10%	3.82	15%	0.12
Aviation CO2	36%	17.54		16%	0.54	10%	0.02
Shipping CO2	4%	7.83		10%	0.24	31%	0.01



— GDP
— Mt CO2
— Transport CO2
— Road CO2
— Aviation CO2
— Shipping CO2

Transport and the Economy	1990	1995	2000	2001	2002	2003	2004	2005	1990-2005	% per year
Population (millions)	27.70	29.30	30.69	31.02	31.37	31.67	31.97	32.27	16%	1.02%
GDP (billion 2000 US\$, PPP)	654.75	713.05	873.06	888.64	914.81	931.48	962.21	990.45	51%	2.80%
Road passenger km (million pkm)
Road freight tonne km (million tkm)
Road pkm/capita
Road freight tkm/\$ of GDP
Motorisation (Cars/1000 inhabitants)	456	450	549	550	559	561	561	562	23%	1.40%
CO2 Emissions										
IEA CO2 from fuel combustion (Mt CO2)*	434.36	467.15	536.60	529.94	537.34	558.48	554.50	553.02	27%	1.62%
IEA transport CO2 (Mt CO2)*	129.84	142.26	155.82	154.05	155.34	156.23	161.93	164.66	27%	1.60%
<i>Transport as a percentage of total</i>	29.9%	30.5%	29.0%	29.1%	28.9%	28.0%	29.2%	29.8%		
Road	95.94	104.39	114.41	114.46	115.89	119.16	123.03	123.42	29%	1.69%
Rail	6.32	5.72	5.87	5.77	5.23	5.21	5.30	5.57	-12%	-0.84%
Domestic Aviation	10.24	10.39	13.08	11.54	12.62	13.12	14.14	14.99	46%	2.57%
International Aviation	2.70	2.58	3.08	3.22	2.77	2.14	2.71	2.55	-6%	-0.38%
Domestic Navigation	4.62	3.99	4.69	5.07	5.05	5.70	6.12	5.95	29%	1.70%
International Maritime	2.88	3.18	3.35	3.60	2.73	1.58	1.92	1.88	-35%	-2.80%
Other Transport	7.14	12.01	11.34	10.39	11.05	9.32	8.71	10.30	44%	2.47%
GHG Emissions										
UNFCCC GHG emissions (Mt CO2 eq.)*	606.17	656.66	734.67	727.20	732.55	755.18	758.97	758.40	25%	1.50%
UNFCCC Transport GHG (Mt CO2 eq.)*	159.12	174.18	196.29	193.45	194.69	197.56	204.55	209.24	31%	1.84%
<i>Transport as a percentage of total</i>	26.3%	26.5%	26.7%	26.6%	26.6%	26.2%	27.0%	27.6%		

*includes international aviation and shipping