

Croatia

Total CO2 from Fuel Combustion including International Air and Maritime (2005)

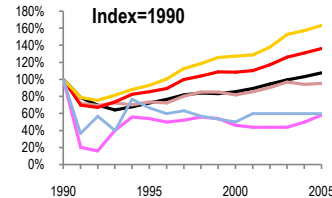
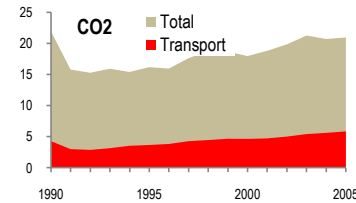
EU

N.Am

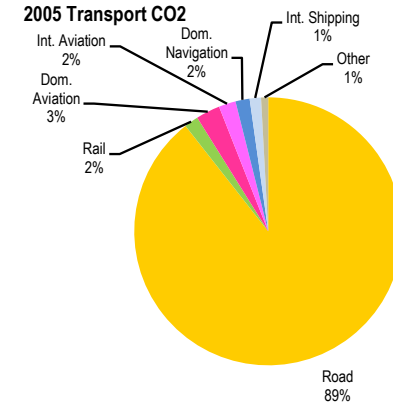
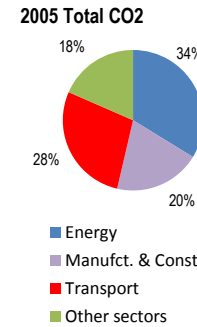
Asia-Pac

Other ITF

Change 1990-2005*	Mt	2005	T per capita	2005	Kg/\$2000 PPP	2005
CO2	5%	20.97	3%	4.72	11%	0.41
Transport CO2	36%	5.85	47%	1.32	27%	0.11
Road CO2	63%	5.23	76%	1.18	52%	0.10
Aviation CO2	42%	0.29	38%	0.07	46%	0.01
Shipping CO2	40%	0.18	35%	0.04	44%	0.00



— GDP
— Mt CO2
— Transport CO2
— Road CO2
— Aviation CO2
— Shipping CO2



Transport and the Economy	1990	1995	2000	2001	2002	2003	2004	2005	1990-2005	% per year
Population (millions)	4.78	4.67	4.50	4.44	4.44	4.44	4.44	4.44	-7%	-0.49%
GDP (billion 2000 US\$, PPP)	47.89	34.69	41.03	42.83	45.23	47.63	49.44	51.55	8%	0.49%
Road passenger km (million pkm)	7004	4052	3331	3478	3557	3716	3390	3403	-51%	-4.70%
Road freight tonne km (million tkm)	13489	3741	5336	10093	11266	12451	13332	14056	4%	0.27%
Road pkm/capita	1465	868	740	783	801	837	764	766	-48%	-4.23%
Road freight tkm/\$ of GDP	0.28	0.11	0.13	0.24	0.25	0.26	0.27	0.27	-3%	-0.22%
Motorisation (Cars/1000 inhabitants)	166	152	250	269	280	291	301	312	87%	4.28%
CO2 Emissions										
IEA CO2 from fuel combustion (Mt CO2)*	21.98	16.19	17.98	18.82	19.86	21.28	20.72	20.97	-5%	-0.31%
IEA transport CO2 (Mt CO2)*	4.29	3.67	4.65	4.73	5.02	5.42	5.62	5.85	36%	2.09%
<i>Transport as a percentage of total</i>	19.5%	22.7%	25.9%	25.1%	25.3%	25.5%	27.1%	27.9%		
Road	3.20	2.98	4.07	4.12	4.41	4.89	5.04	5.23	63%	3.33%
Rail	0.13	0.10	0.09	0.09	0.09	0.09	0.10	0.10	-23%	-1.73%
Domestic Aviation	0.35	0.09	0.13	0.16	0.16	0.15	0.16	0.17	-51%	-4.70%
International Aviation	0.15	0.18	0.10	0.06	0.06	0.07	0.09	0.12	-20%	-1.48%
Domestic Navigation	0.15	0.10	0.09	0.09	0.11	0.11	0.11	0.10	-33%	-2.67%
International Maritime	0.15	0.10	0.06	0.09	0.07	0.07	0.07	0.08	-47%	-4.10%
Other Transport	0.16	0.12	0.11	0.12	0.12	0.04	0.05	0.05	-69%	-7.46%
GHG Emissions										
UNFCCC GHG emissions (Mt CO2 eq.)*	31.87	22.86	25.99	27.13	28.32	29.99	30.19	30.68	-4%	-0.25%
UNFCCC Transport GHG (Mt CO2 eq.)*	4.47	3.75	4.81	4.91	5.21	5.61	5.79	6.06	36%	2.05%
<i>Transport as a percentage of total</i>	14.0%	16.4%	18.5%	18.1%	18.4%	18.7%	19.2%	19.7%		

*includes international aviation and shipping