

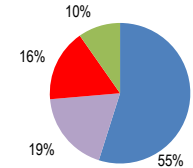
# Czech Republic

Total CO2 from Fuel Combustion including International Air and Maritime (2005)

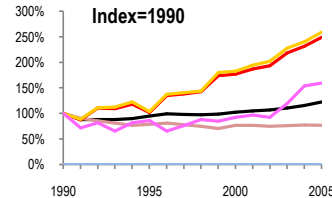
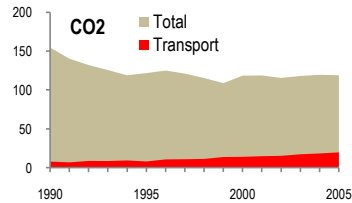
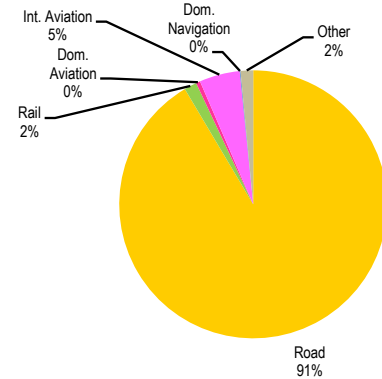
EU	N.Am	Asia-Pac	Other ITF
----	------	----------	-----------

Change 1990-2005*	Mt	2005	T per capita	2005	Kg/\$2000 PPP	2005
		119.09		11.64		0.65
CO2	23%	119.09	22%	11.64	37%	0.65
Transport CO2	149%	19.83	152%	1.94	103%	0.11
Road CO2	159%	18.14	162%	1.77	111%	0.10
Aviation CO2	60%	1.07	62%	0.10	30%	0.01
Shipping CO2		0.02		0.00		0.00

2005 Total CO2



2005 Transport CO2



— GDP  
— Mt CO2  
— Transport CO2  
— Road CO2  
— Aviation CO2  
— Shipping CO2

Transport and the Economy	1990	1995	2000	2001	2002	2003	2004	2005	1990-2005	% per year
Population (millions)	10.36	10.33	10.27	10.22	10.20	10.20	10.21	10.23	-1%	-0.08%
GDP (billion 2000 US\$, PPP)	148.56	141.55	152.37	156.12	159.08	164.81	171.75	182.19	23%	1.37%
Road passenger km (million pkm)	0	65473	73291	74078	74958	76809	76086	77248	..	..
Road freight tonne km (million tkm)	0	60321	58917	56508	63174	64755	63413	61351	..	..
Road pkm/capita	0	6338	7136	7248	7349	7530	7452	7551	..	..
Road freight tkm/\$ of GDP	0.00	0.43	0.39	0.36	0.40	0.39	0.37	0.34	..	..
Motorisation (Cars/1000 inhabitants)	228	301	335	345	358	363	374	387	69%	3.58%
<b>CO2 Emissions</b>										
IEA CO2 from fuel combustion (Mt CO2)*	154.63	121.88	118.59	118.87	115.66	118.15	119.70	119.09	-23%	-1.73%
IEA transport CO2 (Mt CO2)*	7.96	8.13	14.10	14.91	15.39	17.37	18.45	19.83	149%	6.27%
<i>Transport as a percentage of total</i>	5.1%	6.7%	11.9%	12.5%	13.3%	14.7%	15.4%	16.7%		
Road	7.00	7.27	12.78	13.63	14.16	15.96	16.81	18.14	159%	6.55%
Rail	0.00	0.00	0.33	0.31	0.33	0.33	0.31	0.30	..	..
Domestic Aviation	0.00	0.00	0.12	0.15	0.11	0.18	0.14	0.10	..	..
International Aviation	0.67	0.58	0.50	0.50	0.51	0.62	0.89	0.97	45%	2.50%
Domestic Navigation	0.00	0.00	0.02	0.03	0.01	0.01	0.02	0.02	..	..
International Maritime	..	..	..	..	..	..	..	..	..	..
Other Transport	0.29	0.28	0.35	0.29	0.27	0.27	0.28	0.30	3%	0.23%
<b>GHG Emissions</b>										
UNFCCC GHG emissions (Mt CO2 eq.)*	196.83	154.84	149.37	149.87	144.50	148.13	147.95	146.56	-26%	-1.95%
UNFCCC Transport GHG (Mt CO2 eq.)*	8.08	10.17	11.88	13.02	13.48	14.65	16.74	18.46	129%	5.67%
<i>Transport as a percentage of total</i>	4.1%	6.6%	8.0%	8.7%	9.3%	9.9%	11.3%	12.6%		

\*includes international aviation and shipping