

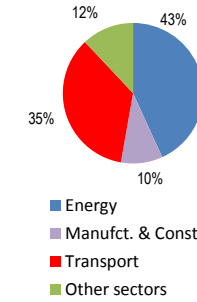
Denmark

Total CO2 from Fuel Combustion including International Air and Maritime (2005)

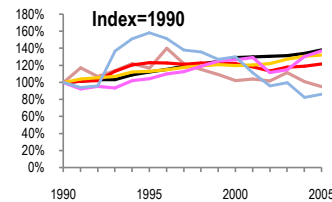
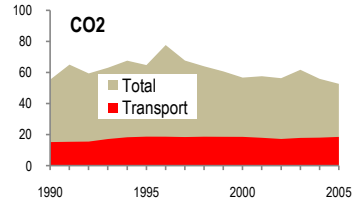
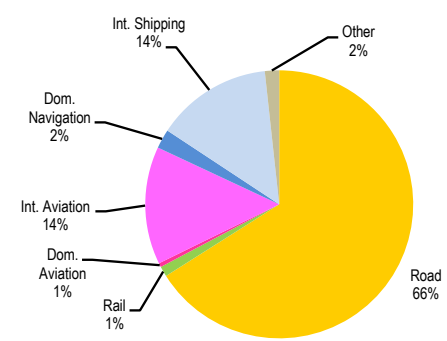
EU	N.Am	Asia-Pac	Other ITF
----	------	----------	-----------

52.7 Mt					
Change 1990-2005*	Mt	2005	T per capita	2005	Kg/\$2000 PPP
CO2	5%	52.75	10%	9.73	31%
Transport CO2	22%	18.57	16%	3.43	12%
Road CO2	32%	12.26	25%	2.26	4%
Aviation CO2	37%	2.73	30%	0.50	1%
Shipping CO2	14%	3.03	18%	0.56	38%

2005 Total CO2



2005 Transport CO2



— GDP
— Mt CO2
— Transport CO2
— Road CO2
— Aviation CO2
— Shipping CO2

	1990	1995	2000	2001	2002	2003	2004	2005	1990-2005	% per year
Transport and the Economy										
Population (millions)	5.14	5.23	5.34	5.36	5.38	5.39	5.40	5.42	5%	0.35%
GDP (billion 2000 US\$, PPP)	119.07	133.65	153.86	154.94	155.66	156.74	159.68	164.43	38%	2.18%
Road passenger km (million pkm)	59460	61672	65217	64466	64886	65784	67605	67402	13%	0.84%
Road freight tonne km (million tkm)	13155	14420	17715	17543	18066	18151	17940	18150	38%	2.17%
Road pkm/capita	11568	11792	12213	12027	12061	12205	12519	12436	8%	0.48%
Road freight tkm/\$ of GDP	0.11	0.11	0.12	0.11	0.12	0.12	0.11	0.11	0%	-0.01%
Motorisation (Cars/1000 inhabitants)	309	321	347	349	351	352	355	363	17%	1.06%
CO2 Emissions										
IEA CO2 from fuel combustion (Mt CO2)*	55.48	64.82	56.76	57.64	56.38	61.78	55.96	52.75	-5%	-0.34%
IEA transport CO2 (Mt CO2)*	15.24	18.75	18.61	18.01	17.26	17.95	18.12	18.57	22%	1.33%
<i>Transport as a percentage of total</i>	27.5%	28.9%	32.8%	31.2%	30.6%	29.1%	32.4%	35.2%		
Road	9.27	10.49	11.12	11.17	11.31	11.79	12.12	12.26	32%	1.88%
Rail	0.30	0.31	0.23	0.21	0.21	0.22	0.22	0.23	-23%	-1.76%
Domestic Aviation	0.22	0.18	0.12	0.12	0.10	0.09	0.08	0.09	-59%	-5.78%
International Aviation	1.77	1.90	2.40	2.45	2.12	2.20	2.51	2.64	49%	2.70%
Domestic Navigation	0.48	0.57	0.36	0.36	0.44	0.42	0.38	0.43	-10%	-0.73%
International Maritime	3.04	5.01	4.22	3.56	2.94	3.09	2.52	2.60	-14%	-1.04%
Other Transport	0.16	0.29	0.16	0.14	0.14	0.14	0.29	0.32	100%	4.73%
GHG Emissions										
UNFCCC GHG emissions (Mt CO2 eq.)*	75.35	84.50	76.40	77.31	75.48	81.03	74.83	70.78	-6%	-0.42%
UNFCCC Transport GHG (Mt CO2 eq.)*	15.44	19.01	19.18	18.52	17.73	18.44	18.42	18.85	22%	1.34%
<i>Transport as a percentage of total</i>	20.5%	22.5%	25.1%	24.0%	23.5%	22.8%	24.6%	26.6%		

*includes international aviation and shipping