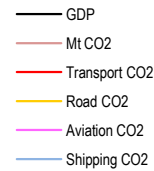
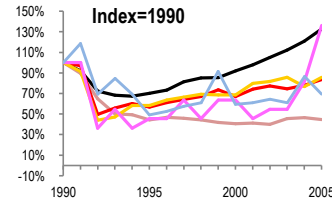
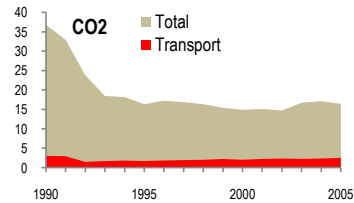
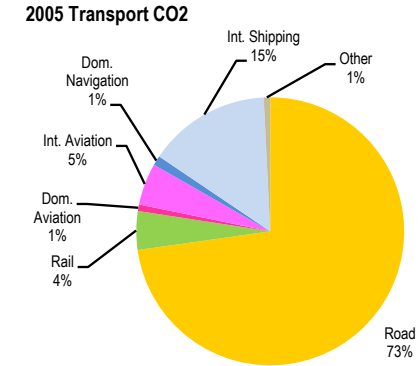
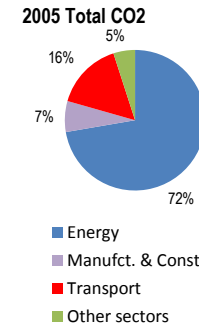


Estonia

Total CO2 from Fuel Combustion including International Air and Maritime (2005)

EU	N.Am	Asia-Pac	Other ITF
----	------	----------	-----------

Change 1990-2005*	Mt	2005	T per capita	2005	Kg/\$2000 PPP	2005
		16.46	16.5Mt			
CO2	55%	16.46	48%	12.19	66%	0.89
Transport CO2	16%	2.57	3%	1.90	37%	0.14
Road CO2	14%	1.87	0%	1.39	35%	0.10
Aviation CO2	36%	0.15	59%	0.11	3%	0.01
Shipping CO2	31%	0.41	19%	0.30	48%	0.02



Transport and the Economy	1990	1995	2000	2001	2002	2003	2004	2005	1990-2005	% per year
Population (millions)	1.57	1.44	1.37	1.36	1.36	1.35	1.35	1.35	-14%	-1.00%
GDP (billion 2000 US\$, PPP)	13.96	9.81	12.86	13.69	14.68	15.66	16.89	18.54	33%	1.91%
Road passenger km (million pkm)	4454	2048	2630	2461	2330	2297	2468	2716	-39%	-3.24%
Road freight tonne km (million tkm)	11489	5395	12118	13202	14123	16113	17485	18280	59%	3.14%
Road pkm/capita	2837	1422	1920	1810	1713	1701	1828	2012	-29%	-2.27%
Road freight tkm/\$ of GDP	0.82	0.55	0.94	0.96	0.96	1.03	1.04	0.99	20%	1.21%
Motorisation (Cars/1000 inhabitants)	154	266	339	299	295	321	349	366	137%	5.93%
CO2 Emissions										
IEA CO2 from fuel combustion (Mt CO2)*	36.79	16.36	14.91	15.14	14.75	16.73	17.15	16.46	-55%	-5.22%
IEA transport CO2 (Mt CO2)*	3.07	1.74	2.06	2.28	2.38	2.29	2.39	2.57	-16%	-1.18%
Transport as a percentage of total	8.3%	10.6%	13.8%	15.1%	16.1%	13.7%	13.9%	15.6%		
Road	2.18	1.27	1.50	1.74	1.78	1.87	1.67	1.87	-14%	-1.02%
Rail	0.17	0.11	0.14	0.13	0.16	0.00	0.12	0.12	-29%	-2.30%
Domestic Aviation	0.02
International Aviation	0.11	0.05	0.07	0.05	0.06	0.06	0.09	0.13	18%	1.12%
Domestic Navigation	0.02	0.01	0.02	0.04	0.01	0.00	0.03	0.03	50%	2.74%
International Maritime	0.57	0.28	0.33	0.32	0.37	0.36	0.48	0.38	-33%	-2.67%
Other Transport	0.02	0.02	0.00	0.00	0.00	0.00	0.00	0.02	0%	0.00%
GHG Emissions										
UNFCCC GHG emissions (Mt CO2 eq.)*	43.30	22.80	19.61	19.96	19.53	21.61	22.02	21.46	-50%	-4.57%
UNFCCC Transport GHG (Mt CO2 eq.)*	3.62	1.86	2.01	2.28	2.43	2.37	2.57	2.62	-28%	-2.13%
Transport as a percentage of total	8.4%	8.1%	10.2%	11.4%	12.4%	11.0%	11.7%	12.2%		

*includes international aviation and shipping