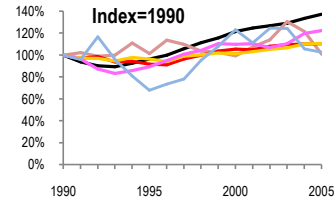
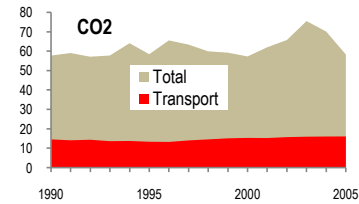
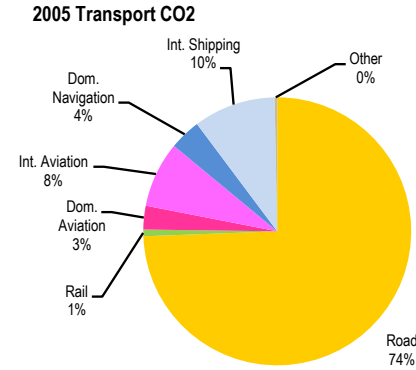
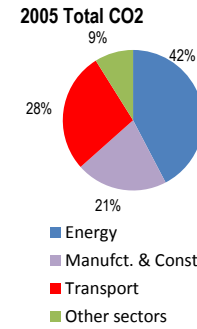


# Finland

Total CO2 from Fuel Combustion including International Air and Maritime (2005)

E	N.Am	Asia-Pac	Other ITF
---	------	----------	-----------

58.3Mt					
Change 1990-2005*	Mt	2005	T per capita	2005	Kg/\$2000 PPP
CO2	1%	58.3	4%	11.10	27%
Transport CO2	10%	16.14	5%	3.07	20%
Road CO2	11%	12.01	5%	2.29	19%
Aviation CO2	23%	1.74	16%	0.33	11%
Shipping CO2	3%	2.21	2%	0.42	25%



Legend for Index=1990 chart:

- GDP
- Mt CO2
- Transport CO2
- Road CO2
- Aviation CO2
- Shipping CO2

Transport and the Economy	1990	1995	2000	2001	2002	2003	2004	2005	1990-2005	% per year
Population (millions)	4.99	5.11	5.18	5.19	5.20	5.21	5.23	5.25	5%	0.34%
GDP (billion 2000 US\$, PPP)	111.17	107.01	135.08	138.65	140.92	143.42	148.45	152.80	37%	2.14%
Road passenger km (million pkm)	59700	58000	63400	64700	66000	67260	68545	69450	16%	1.01%
Road freight tonne km (million tkm)	33827	31708	37941	36635	37845	37051	37553	37594	11%	0.71%
Road pkm/capita	11964	11350	12239	12466	12692	12910	13106	13229	11%	0.67%
Road freight tkm/\$ of GDP	0.30	0.30	0.28	0.26	0.27	0.26	0.25	0.25	-19%	-1.41%
Motorisation (Cars/1000 inhabitants)	389	372	412	416	422	437	449	463	19%	1.17%
<b>CO2 Emissions</b>										
IEA CO2 from fuel combustion (Mt CO2)*	57.77	58.48	57.33	62.05	65.77	75.53	70.16	58.30	1%	0.06%
IEA transport CO2 (Mt CO2)*	14.61	13.40	15.39	15.32	15.78	16.00	16.10	16.14	10%	0.67%
<i>Transport as a percentage of total</i>	25.3%	22.9%	26.8%	24.7%	24.0%	21.2%	22.9%	27.7%		
Road	10.84	10.45	11.00	11.18	11.40	11.56	11.94	12.01	11%	0.69%
Rail	0.20	0.19	0.15	0.14	0.13	0.13	0.14	0.13	-35%	-2.83%
Domestic Aviation	0.41	0.37	0.50	0.48	0.45	0.46	0.42	0.46	12%	0.77%
International Aviation	1.01	0.90	1.06	1.09	1.07	1.11	1.28	1.28	27%	1.59%
Domestic Navigation	0.36	0.41	0.53	0.58	0.64	0.65	0.64	0.61	69%	3.58%
International Maritime	1.79	1.05	2.12	1.81	2.04	2.02	1.63	1.60	-11%	-0.75%
Other Transport	0.00	0.03	0.03	0.04	0.05	0.07	0.05	0.05	#DIV/0!	#NUM!
<b>GHG Emissions</b>										
UNFCCC GHG emissions (Mt CO2 eq.)*	73.88	73.52	73.19	78.06	80.45	88.47	83.89	72.21	-2%	-0.15%
UNFCCC Transport GHG (Mt CO2 eq.)*	15.70	14.17	16.31	16.25	16.72	16.97	17.13	17.12	9%	0.58%
<i>Transport as a percentage of total</i>	21.3%	19.3%	22.3%	20.8%	20.8%	19.2%	20.4%	23.7%		

\*includes international aviation and shipping