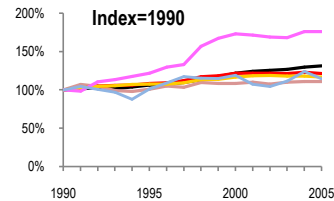
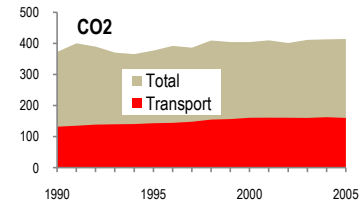


France

Total CO2 from Fuel Combustion including International Air and Maritime (2005)

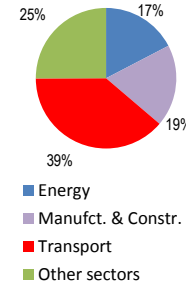
| | | | |
|----|------|----------|-----------|
| EU | N.Am | Asia-Pac | Other ITF |
|----|------|----------|-----------|

| Change 1990-2005* | Mt | 2005 | T per capita | 2005 | Kg/\$2000 PPP | 2005 |
|-------------------|-----|--------|--------------|------|---------------|------|
| CO2 | 11% | 414.35 | 3% | 6.61 | 15% | 0.24 |
| Transport CO2 | 21% | 160.43 | 13% | 2.56 | 8% | 0.09 |
| Road CO2 | 17% | 128.13 | 8% | 2.04 | 11% | 0.08 |
| Aviation CO2 | 76% | 20.94 | 63% | 0.33 | 34% | 0.01 |
| Shipping CO2 | 15% | 10.09 | 6% | 0.16 | 13% | 0.01 |

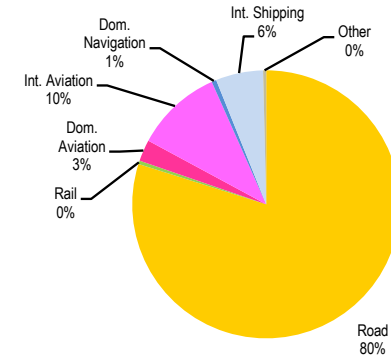


— GDP
— Mt CO2
— Transport CO2
— Road CO2
— Aviation CO2
— Shipping CO2

2005 Total CO2



2005 Transport CO2



| Transport and the Economy | 1990 | 1995 | 2000 | 2001 | 2002 | 2003 | 2004 | 2005 | 1990-2005 | % per year |
|---|---------|---------|---------|---------|---------|---------|---------|---------|-----------|------------|
| Population (millions) | 58.17 | 59.42 | 60.71 | 61.12 | 61.53 | 61.93 | 62.32 | 62.70 | 8% | 0.50% |
| GDP (billion 2000 US\$, PPP) | 1290.53 | 1371.70 | 1574.81 | 1604.01 | 1620.49 | 1638.11 | 1676.10 | 1695.97 | 31% | 1.84% |
| Road passenger km (million pkm) | 627300 | 681700 | 742600 | 768900 | 775700 | 781300 | 780900 | 771300 | 23% | 1.39% |
| Road freight tonne km (million tkm) | 191660 | 233568 | 270351 | 269801 | 267796 | 266155 | 271426 | 262573 | 37% | 2.12% |
| Road pkm/capita | 10784 | 11473 | 12232 | 12580 | 12607 | 12616 | 12530 | 12301 | 14% | 0.88% |
| Road freight tkm/\$ of GDP | 0.15 | 0.17 | 0.17 | 0.17 | 0.17 | 0.16 | 0.16 | 0.15 | 4% | 0.28% |
| Motorisation (Cars/1000 inhabitants) | 405 | 422 | 462 | 470 | 474 | 477 | 477 | .. | .. | .. |
| CO2 Emissions | | | | | | | | | | |
| IEA CO2 from fuel combustion (Mt CO2)* | 373.04 | 377.17 | 404.53 | 410.11 | 401.54 | 411.64 | 413.29 | 414.35 | 11% | 0.70% |
| IEA transport CO2 (Mt CO2)* | 132.18 | 143.35 | 160.98 | 161.27 | 161.10 | 160.48 | 162.76 | 160.43 | 21% | 1.30% |
| <i>Transport as a percentage of total</i> | 35.4% | 38.0% | 39.8% | 39.3% | 40.1% | 39.0% | 39.4% | 38.7% | | |
| Road | 109.63 | 118.12 | 128.11 | 129.98 | 130.38 | 129.27 | 129.55 | 128.13 | 17% | 1.04% |
| Rail | 1.22 | 1.21 | 1.16 | 0.77 | 0.79 | 0.75 | 0.74 | 0.67 | -45% | -3.92% |
| Domestic Aviation | 2.22 | 2.62 | 4.84 | 6.21 | 5.38 | 4.48 | 4.32 | 4.15 | 87% | 4.26% |
| International Aviation | 9.67 | 11.87 | 15.78 | 14.20 | 14.70 | 15.54 | 16.60 | 16.79 | 74% | 3.75% |
| Domestic Navigation | 0.79 | 0.91 | 1.02 | 0.93 | 0.91 | 0.91 | 0.91 | 0.91 | 15% | 0.95% |
| International Maritime | 8.01 | 7.99 | 9.48 | 8.52 | 8.28 | 8.92 | 10.03 | 9.18 | 15% | 0.91% |
| Other Transport | 0.64 | 0.63 | 0.59 | 0.66 | 0.66 | 0.61 | 0.61 | 0.60 | -6% | -0.43% |
| GHG Emissions | | | | | | | | | | |
| UNFCCC GHG emissions (Mt CO2 eq.)* | 584.21 | 580.62 | 588.27 | 589.31 | 580.91 | 584.39 | 586.83 | 583.57 | 0% | -0.01% |
| UNFCCC Transport GHG (Mt CO2 eq.)* | 138.44 | 150.52 | 166.25 | 168.57 | 169.38 | 169.96 | 172.95 | 170.99 | 24% | 1.42% |
| <i>Transport as a percentage of total</i> | 23.7% | 25.9% | 28.3% | 28.6% | 29.2% | 29.1% | 29.5% | 29.3% | | |

*includes international aviation and shipping