

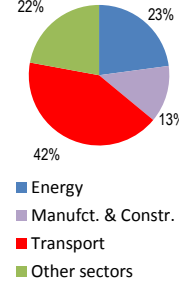
Georgia

Total CO2 from Fuel Combustion including International Air and Maritime (2005)

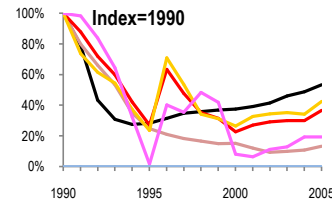
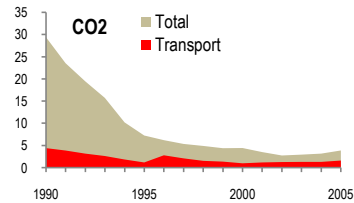
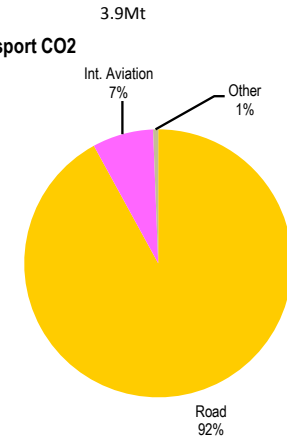
EU	N.Am	Asia-Pac	Other ITF
----	------	----------	-----------

Change 1990-2005*	Mt	2005	T per capita	2005	Kg/\$2000 PPP	2005
CO2	87%	3.9	84%	0.87	75%	0.29
Transport CO2	63%	1.63	55%	0.36	31%	0.12
Road CO2	57%	1.5	48%	0.34	20%	0.11
Aviation CO2	81%	0.12	76%	0.03	64%	0.01
Shipping CO2						

2005 Total CO2



2005 Transport CO2



— GDP
— Mt CO2
— Transport CO2
— Road CO2
— Aviation CO2
— Shipping CO2

Transport and the Economy	1990	1995	2000	2001	2002	2003	2004	2005	1990-2005	% per year
Population (millions)	5.46	5.03	4.72	4.67	4.61	4.57	4.52	4.47	-18%	-1.32%
GDP (billion 2000 US\$, PPP)	25.14	7.10	9.43	9.88	10.42	11.58	12.26	13.40	-47%	-4.11%
Road passenger km (million pkm)
Road freight tonne km (million tkm)	13411	1376	6234	7146	7911	8303	7793	9313	-31%	-2.40%
Road pkm/capita
Road freight tkm/\$ of GDP	0.53	0.19	0.66	0.72	0.76	0.72	0.64	0.70	30%	1.78%
Motorisation (Cars/1000 inhabitants)	88	72	52	53	55	56
CO2 Emissions										
IEA CO2 from fuel combustion (Mt CO2)*	29.44	7.27	4.45	3.53	2.77	2.96	3.19	3.90	-87%	-12.61%
IEA transport CO2 (Mt CO2)*	4.43	1.20	1.01	1.20	1.29	1.33	1.33	1.63	-63%	-6.45%
<i>Transport as a percentage of total</i>	15.0%	16.5%	22.7%	34.0%	46.6%	44.9%	41.7%	41.8%		
Road	3.52	0.83	0.93	1.15	1.21	1.24	1.20	1.50	-57%	-5.53%
Rail	0.11	0.20	0.03	0.00	0.00	0.00	0.00	0.00	-100%	-99.99%
Domestic Aviation
International Aviation	0.62	0.01	0.05	0.04	0.07	0.08	0.12	0.12	-81%	-10.37%
Domestic Navigation
International Maritime	..	0.16
Other Transport	0.18	0.00	0.00	0.01	0.01	0.01	0.01	0.01	-94%	-17.53%
GHG Emissions										
UNFCCC GHG emissions (Mt CO2 eq.)*
UNFCCC Transport GHG (Mt CO2 eq.)*
<i>Transport as a percentage of total</i>

*includes international aviation and shipping