

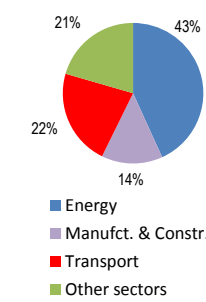
# Germany

Total CO2 from Fuel Combustion including International Air and Maritime (2005)

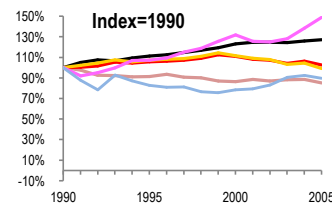
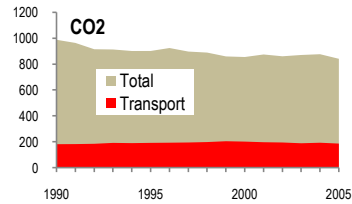
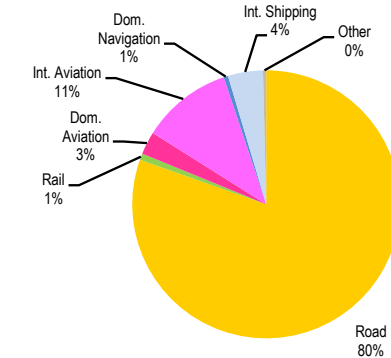
EU	841.8Mt	N.Am	Asia-Pac	Other ITF
----	---------	------	----------	-----------

Change 1990-2005*	Mt	2005	T per capita	2005	Kg/\$2000 PPP	2005
CO2	15%	841.78	18%	10.21	33%	0.39
Transport CO2	3%	186.84	1%	2.27	19%	0.09
Road CO2	1%	150.21	4%	1.82	22%	0.07
Aviation CO2	49%	25.56	43%	0.31	17%	0.01
Shipping CO2	10%	8.89	14%	0.11	29%	0.00

2005 Total CO2



2005 Transport CO2



— GDP  
— Mt CO2  
— Transport CO2  
— Road CO2  
— Aviation CO2  
— Shipping CO2

Transport and the Economy	1990	1995	2000	2001	2002	2003	2004	2005	1990-2005	% per year
Population (millions)	79.36	81.66	82.19	82.34	82.48	82.52	82.50	82.46	4%	0.26%
GDP (billion 2000 US\$, PPP)	1706.54	1902.56	2101.35	2127.41	2127.41	2123.41	2149.89	2169.43	27%	1.61%
Road passenger km (million pkm)	649800	883800	900300	921300	938900	935400	956254	953059	47%	2.59%
Road freight tonne km (million tkm)	339540	386754	439698	445699	440861	444320	470056	486372	43%	2.42%
Road pkm/capita	8188	10823	10954	11189	11383	11335	11591	11558	41%	2.32%
Road freight tkm/\$ of GDP	0.20	0.20	0.21	0.21	0.21	0.21	0.22	0.22	13%	0.80%
Motorisation (Cars/1000 inhabitants)	387	495	521	532	538	541	546	550	42%	2.38%
<b>CO2 Emissions</b>										
IEA CO2 from fuel combustion (Mt CO2)*	988.50	902.05	855.61	875.05	861.03	871.31	877.20	841.78	-15%	-1.07%
IEA transport CO2 (Mt CO2)*	182.09	192.33	202.05	197.29	195.33	189.42	193.41	186.84	3%	0.17%
<i>Transport as a percentage of total</i>	18.4%	21.3%	23.6%	22.5%	22.7%	21.7%	22.0%	22.2%		
Road	151.31	162.52	169.08	165.32	163.15	156.13	158.26	150.21	-1%	-0.05%
Rail	2.96	2.31	1.82	1.83	1.72	1.60	1.52	1.46	-51%	-4.60%
Domestic Aviation	4.12	3.74	4.59	4.37	4.34	4.44	4.79	5.15	25%	1.50%
International Aviation	13.04	14.65	18.03	17.20	17.14	17.55	18.97	20.41	57%	3.03%
Domestic Navigation	2.06	1.74	0.88	0.85	0.74	0.74	0.74	1.00	-51%	-4.70%
International Maritime	7.85	6.47	6.90	7.01	7.51	8.23	8.42	7.89	1%	0.03%
Other Transport	0.75	0.90	0.75	0.71	0.73	0.73	0.71	0.72	-4%	-0.27%
<b>GHG Emissions</b>										
UNFCCC GHG emissions (Mt CO2 eq.)*	1247.58	1116.23	1044.61	1061.20	1042.33	1056.72	1051.52	1030.73	-17%	-1.26%
UNFCCC Transport GHG (Mt CO2 eq.)*	184.17	199.35	209.15	204.98	203.78	198.39	199.47	194.96	6%	0.38%
<i>Transport as a percentage of total</i>	14.8%	17.9%	20.0%	19.3%	19.6%	18.8%	19.0%	18.9%		

\*includes international aviation and shipping