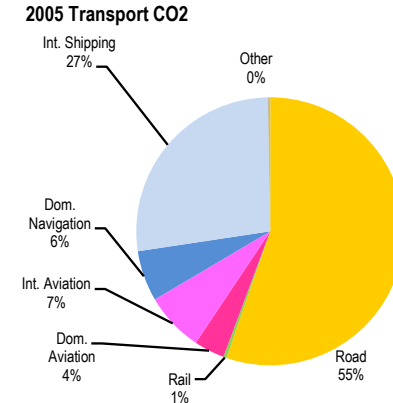
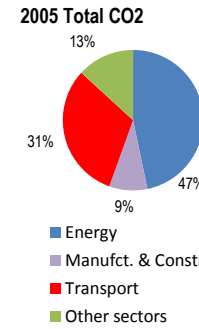
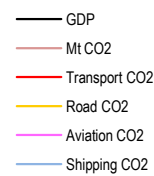
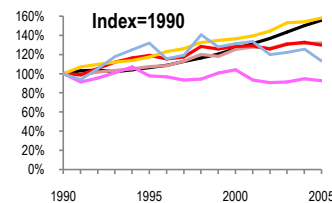
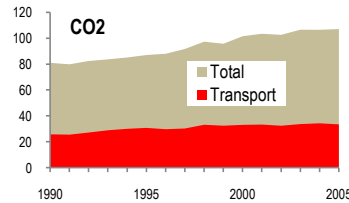


Greece

Total CO2 from Fuel Combustion including International Air and Maritime (2005)

EU	N.Am	Asia-Pac	Other ITF
----	------	----------	-----------

Change 1990-2005*	Mt	2005	T per capita	2005	Kg/\$2000 PPP	2005
CO2	32%	107.14	23%	9.65	15%	0.38
Transport CO2	30%	33.53	21%	3.02	17%	0.12
Road CO2	58%	18.54	47%	1.67	2%	0.07
Aviation CO2	7%	3.63	14%	0.33	40%	0.01
Shipping CO2	13%	11.13	5%	1.00	27%	0.04



Transport and the Economy	1990	1995	2000	2001	2002	2003	2004	2005	1990-2005	% per year
Population (millions)	10.34	10.63	10.92	10.95	10.99	11.02	11.06	11.10	7%	0.47%
GDP (billion 2000 US\$, PPP)	181.36	192.95	228.60	238.83	248.12	260.16	272.46	282.62	56%	3.00%
Road passenger km (million pkm)	24233	31452	40458	41083	41811	42029	42596	42484	75%	3.81%
Road freight tonne km (million tkm)	13095	12662	14717	14803	15027	15156	16065	16474	26%	1.54%
Road pkm/capita	2344	2959	3705	3752	3804	3814	3851	3827	63%	3.32%
Road freight tkm/\$ of GDP	0.07	0.07	0.06	0.06	0.06	0.06	0.06	0.06	-19%	-1.42%
Motorisation (Cars/1000 inhabitants)	168	207	293	313	332	348	368	388	131%	5.74%
CO2 Emissions										
IEA CO2 from fuel combustion (Mt CO2)*	81.04	87.09	101.61	103.51	102.68	106.63	106.58	107.14	32%	1.88%
IEA transport CO2 (Mt CO2)*	25.82	30.81	33.16	33.38	32.48	33.76	34.34	33.53	30%	1.76%
<i>Transport as a percentage of total</i>	31.9%	35.4%	32.6%	32.2%	31.6%	31.7%	32.2%	31.3%		
Road	11.71	13.76	15.98	16.34	16.92	17.95	18.06	18.54	58%	3.11%
Rail	0.20	0.14	0.13	0.13	0.13	0.13	0.13	0.13	-35%	-2.83%
Domestic Aviation	1.48	1.21	1.57	1.33	1.22	1.17	1.24	1.24	-16%	-1.17%
International Aviation	2.43	2.61	2.50	2.33	2.33	2.40	2.47	2.39	-2%	-0.11%
Domestic Navigation	1.80	1.73	1.56	2.13	1.92	1.90	2.13	2.05	14%	0.87%
International Maritime	8.03	11.26	11.36	11.03	9.89	10.13	10.22	9.08	13%	0.82%
Other Transport	0.17	0.10	0.06	0.09	0.07	0.08	0.09	0.10	-41%	-3.48%
GHG Emissions										
UNFCCC GHG emissions (Mt CO2 eq.)*	119.32	127.20	145.76	146.78	145.36	150.57	151.10	151.10	27%	1.59%
UNFCCC Transport GHG (Mt CO2 eq.)*	26.23	31.32	33.80	34.04	33.19	35.15	35.77	35.77	36%	2.09%
<i>Transport as a percentage of total</i>	22.0%	24.6%	23.2%	23.2%	22.8%	23.3%	23.7%	23.7%		

*includes international aviation and shipping