

# Hungary

Total CO2 from Fuel Combustion including International Air and Maritime (2005)

EU

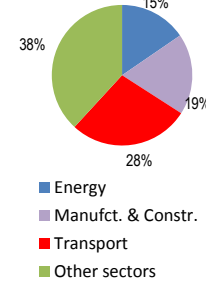
N.Am

Asia-Pac

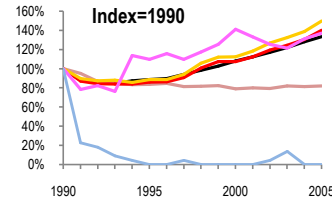
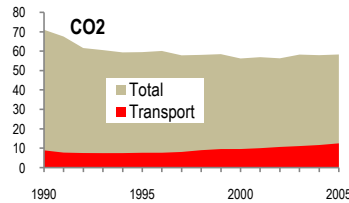
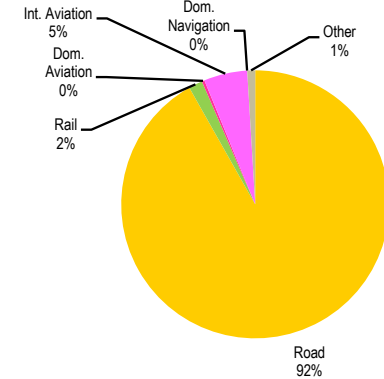
Other ITF

Change 1990-2005*	Mt	2005	T per capita	2005	Kg/\$2000 PPP	2005
CO2	18%	58.34	16%	5.78	39%	0.37
Transport CO2	40%	12.58	44%	1.25	5%	0.08
Road CO2	50%	11.55	54%	1.14	12%	0.07
Aviation CO2	37%	0.7	41%	0.07	3%	0.00
Shipping CO2	100%	0	100%	0.00	100%	0.00

2005 Total CO2



2005 Transport CO2



— GDP  
— Mt CO2  
— Transport CO2  
— Road CO2  
— Aviation CO2  
— Shipping CO2

Transport and the Economy	1990	1995	2000	2001	2002	2003	2004	2005	1990-2005	% per year
Population (millions)	10.37	10.33	10.21	10.19	10.16	10.13	10.11	10.09	-3%	-0.18%
GDP (billion 2000 US\$, PPP)	116.70	103.54	126.04	131.19	136.89	142.53	149.47	155.82	34%	1.95%
Road passenger km (million pkm)	71104	64542	64622	64506	64702	64965	64858	64159	-10%	-0.68%
Road freight tonne km (million tkm)	39265	26777	25156	25743	24940	25445	27042	28191	-28%	-2.18%
Road pkm/capita	6857	6248	6329	6330	6368	6413	6415	6359	-7%	-0.50%
Road freight tkm/\$ of GDP	0.34	0.26	0.20	0.20	0.18	0.18	0.18	0.18	-46%	-4.05%
Motorisation (Cars/1000 inhabitants)	188	217	232	244	259	274	280	286	53%	2.86%
<b>CO2 Emissions</b>										
IEA CO2 from fuel combustion (Mt CO2)*	71.08	59.55	56.28	56.96	56.36	58.29	57.98	58.34	-18%	-1.31%
IEA transport CO2 (Mt CO2)*	8.98	7.73	9.65	10.09	10.73	11.18	11.71	12.58	40%	2.27%
<i>Transport as a percentage of total</i>	12.6%	13.0%	17.1%	17.7%	19.0%	19.2%	20.2%	21.6%		
Road	7.71	6.84	8.67	9.15	9.77	10.21	10.71	11.55	50%	2.73%
Rail	0.53	0.32	0.27	0.26	0.25	0.24	0.23	0.21	-60%	-5.99%
Domestic Aviation	0.00	0.00	0.00	0.00	0.00	0.00	0.00	0.04	..	..
International Aviation	0.51	0.56	0.72	0.68	0.64	0.62	0.67	0.66	29%	1.73%
Domestic Navigation	0.22	0.00	0.00	0.00	0.01	0.03	0.00	0.00	-100%	..
International Maritime	..	..	..	..	..	..	..	..	..	..
Other Transport	0.01	0.01	-0.01	0.00	0.06	0.08	0.10	0.12	1100%	18.02%
<b>GHG Emissions</b>										
UNFCCC GHG emissions (Mt CO2 eq.)*	98.61	79.77	77.97	79.65	77.63	80.87	79.81	80.91	-18%	-1.31%
UNFCCC Transport GHG (Mt CO2 eq.)*	8.93	7.72	9.59	9.83	10.30	10.65	11.18	12.92	45%	2.50%
<i>Transport as a percentage of total</i>	9.1%	9.7%	12.3%	12.3%	13.3%	13.2%	14.0%	16.0%		

\*includes international aviation and shipping