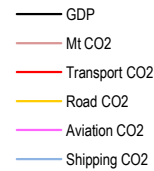
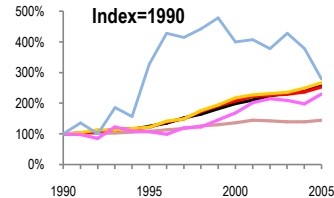
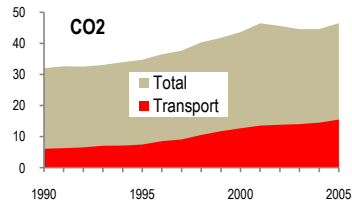


# Ireland

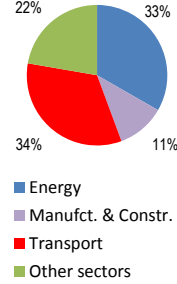
Total CO2 from Fuel Combustion including International Air and Maritime (2005)

EU	N.Am	Asia-Pac	Other ITF
----	------	----------	-----------

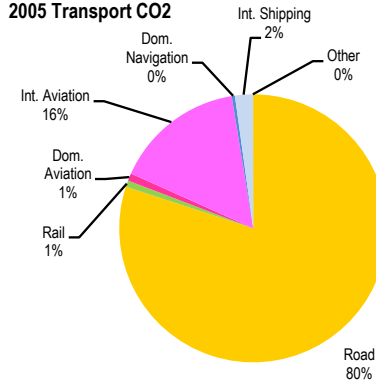
Change 1990-2005*	Mt	2005	T per capita	2005	Kg/\$2000 PPP	2005
CO2	46.54	46.54	11.21	11.21	0.33	0.33
Transport CO2	15.52	15.52	3.74	3.74	0.11	0.11
Road CO2	12.42	12.42	2.99	2.99	0.09	0.09
Aviation CO2	2.58	2.58	0.62	0.62	0.02	0.02
Shipping CO2	0.39	0.39	0.09	0.09	0.00	0.00



## 2005 Total CO2



## 2005 Transport CO2



Transport and the Economy	1990	1995	2000	2001	2002	2003	2004	2005	1990-2005	% per year
Population (millions)	3.51	3.60	3.80	3.86	3.93	3.99	4.06	4.15	18%	1.12%
GDP (billion 2000 US\$, PPP)	55.01	69.00	109.64	116.05	123.05	128.33	133.86	141.26	157%	6.49%
Road passenger km (million pkm)	..	..	..	..	..	..	..	..	..	..
Road freight tonne km (million tkm)	5719	6095	12839	12921	14874	16296	17688	18455	223%	8.12%
Road pkm/capita	..	..	..	..	..	..	..	..	..	..
Road freight tkm/\$ of GDP	0.10	0.09	0.12	0.11	0.12	0.13	0.13	0.13	26%	1.53%
Motorisation (Cars/1000 inhabitants)	229	278	351	363	373	383	395	406	78%	3.90%
<b>CO2 Emissions</b>										
IEA CO2 from fuel combustion (Mt CO2)*	32.05	34.75	43.66	46.50	45.65	44.61	44.63	46.54	45%	2.52%
IEA transport CO2 (Mt CO2)*	6.12	7.48	12.71	13.57	13.85	14.05	14.51	15.52	154%	6.40%
<i>Transport as a percentage of total</i>	19.1%	21.5%	29.1%	29.2%	30.3%	31.5%	32.5%	33.3%		
Road	4.65	5.65	10.11	10.57	10.77	10.96	11.61	12.42	167%	6.77%
Rail	0.15	0.15	0.12	0.12	0.12	0.13	0.12	0.12	-20%	-1.48%
Domestic Aviation	0.05	0.05	0.10	0.12	0.12	0.12	0.11	0.14	180%	7.11%
International Aviation	1.07	1.15	1.79	2.15	2.28	2.23	2.11	2.44	128%	5.65%
Domestic Navigation	0.08	0.09	0.08	0.06	0.06	0.06	0.06	0.06	-25%	-1.90%
International Maritime	0.06	0.37	0.48	0.51	0.47	0.54	0.47	0.33	450%	12.04%
Other Transport	0.06	0.02	0.03	0.04	0.03	0.01	0.03	0.01	-83%	-11.26%
<b>GHG Emissions</b>										
UNFCCC GHG emissions (Mt CO2 eq.)*	56.50	60.89	71.41	73.60	71.74	71.61	71.27	72.75	29%	1.70%
UNFCCC Transport GHG (Mt CO2 eq.)*	6.31	7.84	13.23	14.16	14.45	14.68	15.20	16.27	158%	6.52%
<i>Transport as a percentage of total</i>	11.2%	12.9%	18.5%	19.2%	20.1%	20.5%	21.3%	22.4%		

\*includes international aviation and shipping