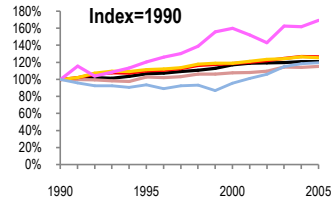
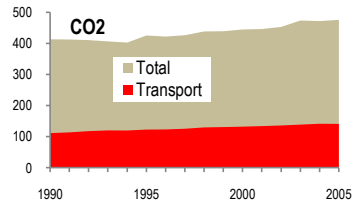


# Italy

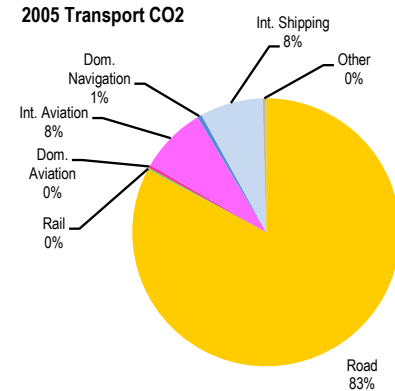
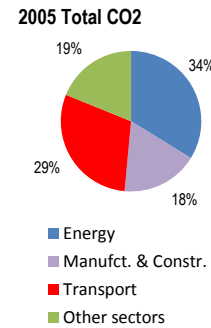
Total CO2 from Fuel Combustion including International Air and Maritime (2005)

EU	476.1Mt	N.Am	Asia-Pac	Other ITF
----	---------	------	----------	-----------

Change 1990-2005*	Mt	2005	T per capita	2005	Kg/\$2000 PPP	2005
CO2	15%	476.08	12%	8.13	5%	0.31
Transport CO2	27%	141.19	23%	2.41	5%	0.09
Road CO2	26%	116.86	22%	2.00	4%	0.08
Aviation CO2	69%	11.91	64%	0.20	40%	0.01
Shipping CO2	20%	11.49	16%	0.20	1%	0.01



— GDP  
— Mt CO2  
— Transport CO2  
— Road CO2  
— Aviation CO2  
— Shipping CO2



Transport and the Economy	1990	1995	2000	2001	2002	2003	2004	2005	1990-2005	% per year
Population (millions)	56.72	56.84	56.94	56.98	57.16	57.61	58.18	58.53	3%	0.21%
GDP (billion 2000 US\$, PPP)	1259.12	1341.22	1473.99	1500.45	1505.59	1506.14	1522.19	1521.65	21%	1.27%
Road passenger km (million pkm)	606549	701860	820079	813276	808678	809307	815891	809598	33%	1.94%
Road freight tonne km (million tkm)	210745	229162	194888	189990	193878	176384	192264	195159	-7%	-0.51%
Road pkm/capita	10694	12348	14403	14273	14148	14048	14024	13832	29%	1.73%
Road freight tkm/\$ of GDP	0.17	0.17	0.13	0.13	0.13	0.12	0.13	0.13	-23%	-1.76%
Motorisation (Cars/1000 inhabitants)	483	533	572	583	590	596	584	592	23%	1.36%
<b>CO2 Emissions</b>										
IEA CO2 from fuel combustion (Mt CO2)*	413.33	425.76	445.09	446.49	453.25	473.96	472.04	476.08	15%	0.95%
IEA transport CO2 (Mt CO2)*	111.52	122.91	132.26	134.09	136.19	138.93	141.64	141.19	27%	1.59%
<i>Transport as a percentage of total</i>	27.0%	28.9%	29.7%	30.0%	30.0%	29.3%	30.0%	29.7%		
Road	93.11	104.02	110.68	112.88	115.16	115.64	117.92	116.86	26%	1.53%
Rail	0.62	0.61	0.44	0.38	0.39	0.42	0.37	0.31	-50%	-4.52%
Domestic Aviation	0.49	1.04	0.53	0.27	0.28	0.43	0.48	0.54	10%	0.65%
International Aviation	6.54	7.43	10.73	10.43	9.78	11.01	10.91	11.37	74%	3.76%
Domestic Navigation	1.18	1.36	0.64	0.80	0.74	0.90	0.78	0.78	-34%	-2.72%
International Maritime	8.43	7.65	8.56	8.91	9.44	10.15	10.61	10.71	27%	1.61%
Other Transport	1.15	0.80	0.68	0.42	0.40	0.38	0.57	0.62	-46%	-4.03%
<b>GHG Emissions</b>										
UNFCCC GHG emissions (Mt CO2 eq.)*	525.42	539.98	563.35	569.10	569.86	586.56	592.04	594.41	13%	0.83%
UNFCCC Transport GHG (Mt CO2 eq.)*	112.52	124.84	136.25	138.32	141.24	144.37	147.18	146.37	30%	1.77%
<i>Transport as a percentage of total</i>	21.4%	23.1%	24.2%	24.3%	24.8%	24.6%	24.9%	24.6%		

\*includes international aviation and shipping