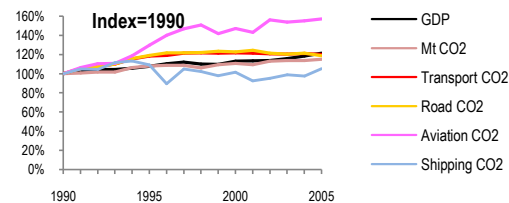
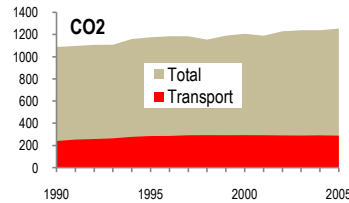
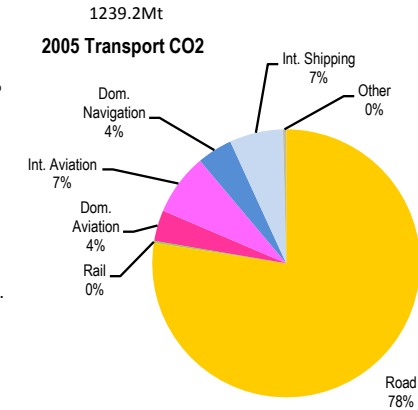
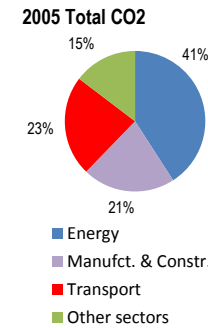


Japan

Total CO2 from Fuel Combustion including International Air and Maritime (2005)

EU	N.Am	Asia	Par	Other ITF
----	------	------	-----	-----------

Change 1990-2005*	Mt	2005	T per capita	2005	Kg/\$2000 PPP	2005
CO2	15%	1254.47	11%	9.82	5%	0.36
Transport CO2	20%	289.5	16%	2.27	1%	0.08
Road CO2	19%	224.24	15%	1.76	2%	0.06
Aviation CO2	57%	32.38	52%	0.25	30%	0.01
Shipping CO2	5%	31.1	2%	0.24	13%	0.01



Transport and the Economy	1990	1995	2000	2001	2002	2003	2004	2005	1990-2005	% per year
Population (millions)	123.48	125.47	126.84	127.15	127.44	127.71	127.75	127.76	3%	0.23%
GDP (billion 2000 US\$, PPP)	2859.69	3081.92	3234.16	3246.61	3250.95	3308.70	3384.87	3473.78	21%	1.31%
Road passenger km (million pkm)	853060	917419	951251	954293	955413	954186	947563	933005	9%	0.60%
Road freight tonne km (million tkm)	301440	319749	335254	335265	334159	344656	350108	357979	19%	1.15%
Road pkm/capita	6908	7312	7500	7505	7497	7472	7417	7303	6%	0.37%
Road freight tkm/\$ of GDP	0.11	0.10	0.10	0.10	0.10	0.10	0.10	0.10	-2%	-0.15%
Motorisation (Cars/1000 inhabitants)	283	356	416	421	428	432	438	447	58%	3.10%
CO2 Emissions										
IEA CO2 from fuel combustion (Mt CO2)*	1088.06	1175.85	1207.77	1189.79	1229.87	1239.55	1239.21	1254.47	15%	0.95%
IEA transport CO2 (Mt CO2)*	241.11	285.84	293.90	293.35	291.65	290.34	292.19	289.50	20%	1.23%
<i>Transport as a percentage of total</i>	22.2%	24.3%	24.3%	24.7%	23.7%	23.4%	23.6%	23.1%		
Road	188.68	224.87	231.67	234.67	229.45	227.64	229.59	224.24	19%	1.16%
Rail	0.95	0.84	0.72	0.69	0.68	0.65	0.67	0.67	-29%	-2.30%
Domestic Aviation	7.24	10.39	10.72	10.76	10.97	11.10	10.70	10.84	50%	2.73%
International Aviation	13.34	16.34	19.61	18.71	21.22	20.56	21.26	21.54	61%	3.25%
Domestic Navigation	12.80	13.80	14.05	13.57	13.72	13.35	12.19	12.36	-3%	-0.23%
International Maritime	16.76	18.54	16.02	13.83	14.49	15.93	16.67	18.74	12%	0.75%
Other Transport	1.34	1.06	1.11	1.12	1.12	1.11	1.11	1.11	-17%	-1.25%
GHG Emissions										
UNFCCC GHG emissions (Mt CO2 eq.)*	1303.19	1382.21	1384.73	1356.28	1392.03	1398.12	1396.51	1401.91	8%	0.49%
UNFCCC Transport GHG (Mt CO2 eq.)*	246.70	294.69	301.18	300.34	298.09	296.52	297.77	295.11	20%	1.20%
<i>Transport as a percentage of total</i>	18.9%	21.3%	21.7%	22.1%	21.4%	21.2%	21.3%	21.1%		

*includes international aviation and shipping