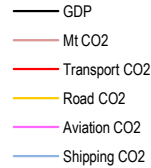
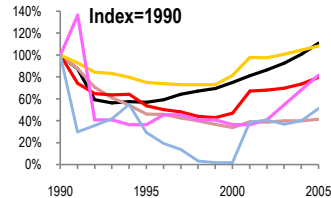
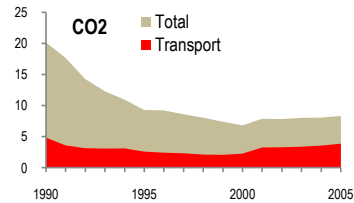


Latvia

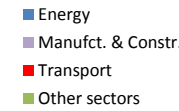
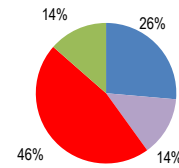
Total CO2 from Fuel Combustion including International Air and Maritime (2005)

EU	N.Am	Asia-Pac	Other ITF
----	------	----------	-----------

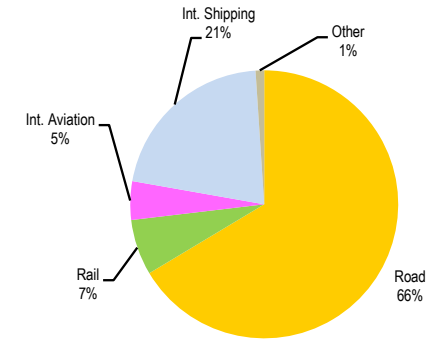
Change 1990-2005*	Mt	2005	8.3Mt	T per capita	2005	Kg/\$2000 PPP	2005
CO2	59%	8.34	52%	3.63	63%	0.30	
Transport CO2	20%	3.87	7%	1.68	28%	0.14	
Road CO2	8%	2.57	26%	1.12	2%	0.09	
Aviation CO2	18%	0.18	5%	0.08	26%	0.01	
Shipping CO2	49%	0.82	41%	0.36	54%	0.03	



2005 Total CO2



2005 Transport CO2



Transport and the Economy	1990	1995	2000	2001	2002	2003	2004	2005	1990-2005	% per year
Population (millions)	2.67	2.52	2.37	2.36	2.34	2.33	2.31	2.30	-14%	-0.99%
GDP (billion 2000 US\$, PPP)	25.15	14.35	18.91	20.43	21.75	23.32	25.33	27.93	11%	0.70%
Road passenger km (million pkm)	5862	1835	2348	2305	2361	2550	2655	2891	-51%	-4.60%
Road freight tonne km (million tkm)	24683	16907	24565	27063	26251	27868	29179	31706	28%	1.68%
Road pkm/capita	2196	728	991	977	1009	1094	1149	1257	-43%	-3.65%
Road freight tkm/\$ of GDP	0.98	1.18	1.30	1.32	1.21	1.20	1.15	1.14	16%	0.98%
Motorisation (Cars/1000 inhabitants)	106	132	235	248	265	278	297	323	205%	7.71%
CO2 Emissions										
IEA CO2 from fuel combustion (Mt CO2)*	20.18	9.30	6.83	7.89	7.84	8.04	8.07	8.34	-59%	-5.72%
IEA transport CO2 (Mt CO2)*	4.85	2.60	2.28	3.26	3.30	3.39	3.57	3.87	-20%	-1.49%
Transport as a percentage of total	24.0%	28.0%	33.4%	41.3%	42.1%	42.2%	44.2%	46.4%		
Road	2.37	1.78	1.93	2.32	2.31	2.39	2.48	2.57	8%	0.54%
Rail	0.54	0.24	0.21	0.21	0.22	0.25	0.26	0.26	-52%	-4.76%
Domestic Aviation
International Aviation	0.22	0.08	0.08	0.08	0.09	0.12	0.15	0.18	-18%	-1.33%
Domestic Navigation	0.11	0.00	0.00	0.00	0.00	0.00	0.00	0.00	-100%	-99.99%
International Maritime	1.49	0.47	0.03	0.62	0.65	0.59	0.64	0.82	-45%	-3.90%
Other Transport	0.12	0.03	0.03	0.03	0.03	0.04	0.04	0.04	-67%	-7.06%
GHG Emissions										
UNFCCC GHG emissions (Mt CO2 eq.)*	28.22	13.05	10.16	11.48	11.45	11.55	11.54	11.92	-58%	-5.58%
UNFCCC Transport GHG (Mt CO2 eq.)*	4.81	2.72	2.38	3.40	3.43	3.54	3.71	4.03	-16%	-1.18%
Transport as a percentage of total	17.1%	20.9%	23.4%	29.6%	30.0%	30.6%	32.2%	33.8%		

*includes international aviation and shipping