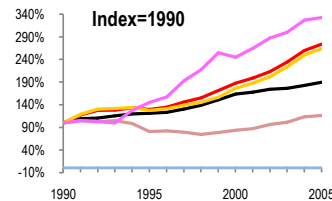
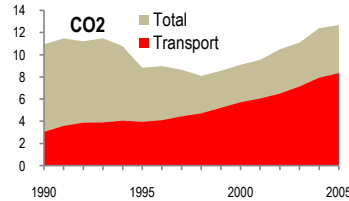
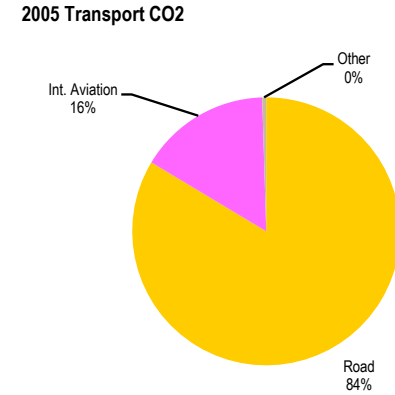
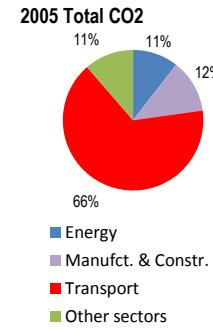


Luxembourg

Total CO2 from Fuel Combustion including International Air and Maritime (2005)

EU	N.Am	Asia-Pac	Other ITF
----	------	----------	-----------

Change 1990-2005*	12.7 Mt	2005	T per capita	2005	Kg/\$2000 PPP	2005
CO2	16%	12.68	4%	27.57	39%	0.49
Transport CO2	174%	8.35	126%	18.15	44%	0.32
Road CO2	164%	6.98	118%	15.17	39%	0.27
Aviation CO2	233%	1.33	175%	2.89	75%	0.05
Shipping CO2		0		0.00		0.00



Legend for Index=1990 chart:

- GDP
- Mt CO2
- Transport CO2
- Road CO2
- Aviation CO2
- Shipping CO2

Transport and the Economy	1990	1995	2000	2001	2002	2003	2004	2005	1990-2005	% per year
Population (millions)	0.38	0.41	0.44	0.44	0.45	0.45	0.45	0.46	21%	1.28%
GDP (billion 2000 US\$, PPP)	13.62	16.53	22.26	22.82	23.70	24.02	24.89	25.88	90%	4.37%
Road passenger km (million pkm)
Road freight tonne km (million tkm)	1428	1390	1454	1486	1566	1438	1503	1262	-12%	-0.82%
Road pkm/capita
Road freight tkm/\$ of GDP	0.10	0.08	0.07	0.07	0.07	0.06	0.06	0.05	-53%	-4.98%
Motorisation (Cars/1000 inhabitants)	483	559	618	638	638	652	667	661	37%	2.12%
CO2 Emissions										
IEA CO2 from fuel combustion (Mt CO2)*	10.94	8.83	9.10	9.55	10.50	11.10	12.40	12.68	16%	0.99%
IEA transport CO2 (Mt CO2)*	3.05	3.96	5.72	6.06	6.50	7.14	7.93	8.35	174%	6.94%
Transport as a percentage of total	27.9%	44.8%	62.9%	63.5%	61.9%	64.3%	64.0%	65.9%		
Road	2.64	3.37	4.66	4.96	5.32	5.91	6.59	6.98	164%	6.70%
Rail	0.00	0.01	0.02	0.01	0.01	0.00	0.00	0.00
Domestic Aviation	0.00	0.00	0.00	0.00	0.00	0.00	0.00	0.00
International Aviation	0.40	0.58	0.98	1.06	1.15	1.20	1.31	1.33	233%	8.34%
Domestic Navigation
International Maritime
Other Transport	0.01	0.00	0.06	0.03	0.02	0.03	0.03	0.04	300%	9.68%
GHG Emissions										
UNFCCC GHG emissions (Mt CO2 eq.)*	13.09	10.35	10.52	10.88	11.92	12.43	14.08	14.05	7%	0.47%
UNFCCC Transport GHG (Mt CO2 eq.)*	3.19	4.15	6.14	6.48	6.78	7.45	8.56	8.79	176%	6.99%
Transport as a percentage of total	24.4%	40.1%	58.4%	59.6%	56.9%	59.9%	60.8%	62.6%		

*includes international aviation and shipping