

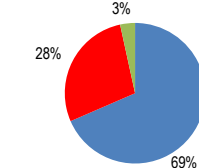
Malta

Total CO2 from Fuel Combustion including International Air and Maritime (2005)

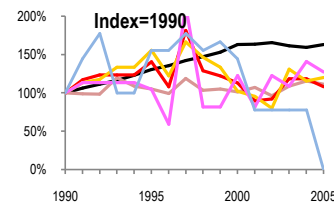
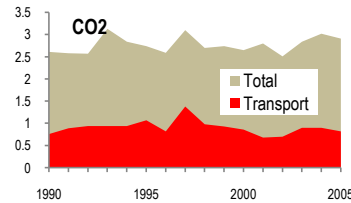
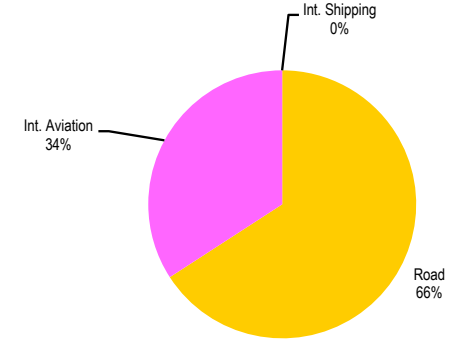
EU	N.Am	Asia-Pac	Other ITF
----	------	----------	-----------

Change 1990-2005*	Mt	2005	T per capita	2005	Kg/\$2000 PPP	2005
CO2	11%	2.91	0%	7.28	32%	0.42
Transport CO2	8%	0.82	3%	2.05	34%	0.12
Road CO2	20%	0.54	8%	1.35	27%	0.08
Aviation CO2	27%	0.28	15%	0.70	22%	0.04
Shipping CO2	100%	0	100%	0.00	100%	0.00

2005 Total CO2



2005 Transport CO2



— GDP
— Mt CO2
— Transport CO2
— Road CO2
— Aviation CO2
— Shipping CO2

Transport and the Economy	1990	1995	2000	2001	2002	2003	2004	2005	1990-2005	% per year
Population (millions)	0.36	0.38	0.39	0.39	0.40	0.40	0.40	0.40	11%	0.70%
GDP (billion 2000 US\$, PPP)	4.22	5.51	6.88	6.90	7.00	6.82	6.72	6.89	63%	3.32%
Road passenger km (million pkm)
Road freight tonne km (million tkm)
Road pkm/capita
Road freight tkm/\$ of GDP
Motorisation (Cars/1000 inhabitants)	303	524	541	562	568	590
CO2 Emissions										
IEA CO2 from fuel combustion (Mt CO2)*	2.61	2.74	2.65	2.80	2.51	2.84	3.02	2.91	11%	0.73%
IEA transport CO2 (Mt CO2)*	0.76	1.07	0.86	0.68	0.70	0.90	0.90	0.82	8%	0.51%
<i>Transport as a percentage of total</i>	29.1%	39.1%	32.5%	24.3%	27.9%	31.7%	29.8%	28.2%		
Road	0.45	0.70	0.46	0.43	0.36	0.59	0.52	0.54	20%	1.22%
Rail
Domestic Aviation
International Aviation	0.22	0.23	0.27	0.18	0.27	0.24	0.31	0.28	27%	1.62%
Domestic Navigation
International Maritime	0.09	0.14	0.13	0.07	0.07	0.07	0.07	0.07	-22%	-1.66%
Other Transport
GHG Emissions										
UNFCCC GHG emissions (Mt CO2 eq.)*
UNFCCC Transport GHG (Mt CO2 eq.)*
<i>Transport as a percentage of total</i>

*includes international aviation and shipping