

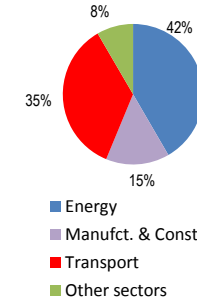
# Mexico

Total CO2 from Fuel Combustion including International Air and Maritime (2005)

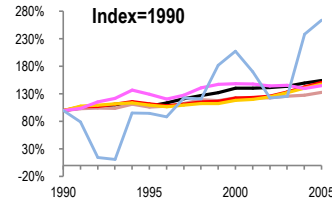
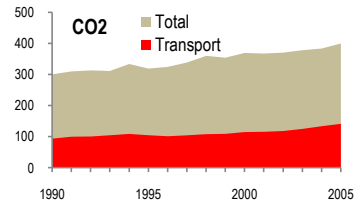
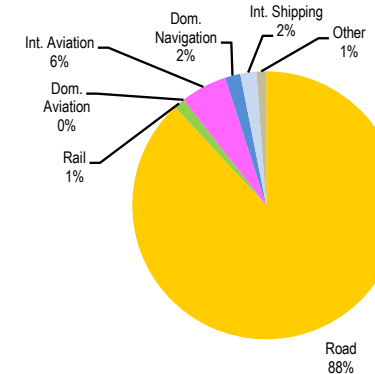
EU	N.Am	Asia-Pac	Other ITF
----	------	----------	-----------

Change 1990-2005*	Mt	2005	T per capita	2005	Kg/\$2000 PPP	2005
CO2	33%	400.05	3%	3.80	14%	0.41
Transport CO2	51%	141.41	16%	1.34	2%	0.14
Road CO2	48%	124.55	14%	1.18	4%	0.13
Aviation CO2	45%	7.95	12%	0.08	6%	0.01
Shipping CO2	164%	5.36	104%	0.05	71%	0.01

2005 Total CO2



2005 Transport CO2



— GDP  
— Mt CO2  
— Transport CO2  
— Road CO2  
— Aviation CO2  
— Shipping CO2

Transport and the Economy	1990	1995	2000	2001	2002	2003	2004	2005	1990-2005	% per year
Population (millions)	81.25	90.16	98.66	100.05	101.40	102.71	104.00	105.30	30%	1.74%
GDP (billion 2000 US\$, PPP)	637.66	687.92	897.16	896.87	903.79	916.36	954.49	982.69	54%	2.93%
Road passenger km (million pkm)	271512	383097	381700	389329	393200	399000	410000	422915	56%	3.00%
Road freight tonne km (million tkm)	108884	162827	194053	191901	192900	195200	199800	204217	88%	4.28%
Road pkm/capita	3342	4249	3869	3891	3878	3885	3942	4016	20%	1.23%
Road freight tkm/\$ of GDP	0.17	0.24	0.22	0.21	0.21	0.21	0.21	0.21	22%	1.32%
Motorisation (Cars/1000 inhabitants)	81	83	103	113	121	124	129	139	73%	3.70%
<b>CO2 Emissions</b>										
IEA CO2 from fuel combustion (Mt CO2)*	300.69	319.19	369.60	367.69	370.56	378.38	383.72	400.05	33%	1.92%
IEA transport CO2 (Mt CO2)*	93.76	104.75	114.97	115.85	118.30	125.11	133.74	141.41	51%	2.78%
<i>Transport as a percentage of total</i>	31.2%	32.8%	31.1%	31.5%	31.9%	33.1%	34.9%	35.3%		
Road	84.20	92.42	99.47	101.28	104.93	111.57	118.02	124.55	48%	2.64%
Rail	2.06	1.78	1.69	1.60	1.64	1.69	1.81	1.89	-8%	-0.57%
Domestic Aviation	0.00	0.00	0.06	0.05	0.05	0.05	0.05	0.06	..	..
International Aviation	5.48	7.10	8.07	8.07	7.86	7.93	7.62	7.89	44%	2.46%
Domestic Navigation	..	..	..	..	..	..	2.42	2.62	..	..
International Maritime	2.03	1.92	4.21	3.46	2.49	2.55	2.42	2.74	35%	2.02%
Other Transport	-0.01	1.53	1.47	1.39	1.33	1.32	1.40	1.66	..	..
<b>GHG Emissions</b>										
UNFCCC GHG emissions (Mt CO2 eq.)*	..	..	..	..	..	..	..	..	..	..
UNFCCC Transport GHG (Mt CO2 eq.)*	..	..	..	..	..	..	..	..	..	..
<i>Transport as a percentage of total</i>	..	..	..	..	..	..	..	..	..	..

\*includes international aviation and shipping