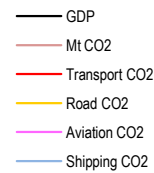
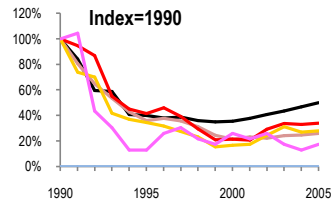
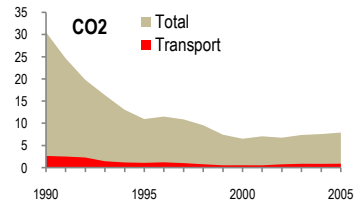


Moldova

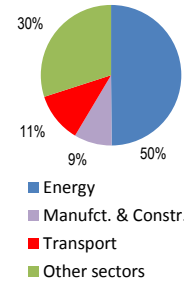
Total CO2 from Fuel Combustion including International Air and Maritime (2005)

EU	N.Am	Asia-Pac	Other ITF
			7.9Mt

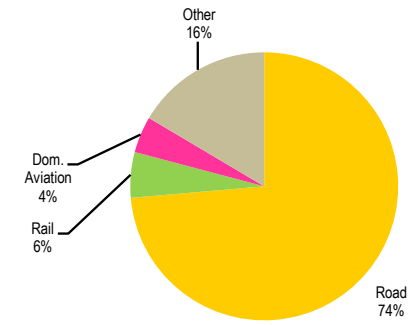
Change 1990-2005*	Mt	2005	T per capita	2005	Kg/\$2000 PPP	2005
CO2	74%	7.93	73%	1.88	48%	1.01
Transport CO2	66%	0.91	65%	0.22	32%	0.12
Road CO2	72%	0.67	71%	0.16	44%	0.09
Aviation CO2	83%	0.04	82%	0.01	65%	0.01
Shipping CO2		0		0.00		0.00



2005 Total CO2



2005 Transport CO2



Transport and the Economy	1990	1995	2000	2001	2002	2003	2004	2005	1990-2005	% per year
Population (millions)	4.36	4.34	4.28	4.26	4.25	4.23	4.22	4.21	-3%	-0.23%
GDP (billion 2000 US\$, PPP)	15.73	6.31	5.60	5.94	6.41	6.83	7.34	7.86	-50%	-4.52%
Road passenger km (million pkm)	4878	1163	1021	1068	1298	1640	1949	2077	-57%	-5.53%
Road freight tonne km (million tkm)	21405	4125	2539	3016	3866	4459	4959	5279	-75%	-8.91%
Road pkm/capita	1119	268	239	251	305	388	462	493	-56%	-5.31%
Road freight tkm/\$ of GDP	1.36	0.65	0.45	0.51	0.60	0.65	0.68	0.67	-51%	-4.60%
Motorisation (Cars/1000 inhabitants)	48	38	56	60	63	63	65	70	45%	2.52%
CO2 Emissions										
IEA CO2 from fuel combustion (Mt CO2)*	30.56	10.98	6.55	7.09	6.78	7.39	7.59	7.93	-74%	-8.60%
IEA transport CO2 (Mt CO2)*	2.67	1.11	0.57	0.55	0.78	0.90	0.88	0.91	-66%	-6.92%
<i>Transport as a percentage of total</i>	8.7%	10.1%	8.7%	7.8%	11.5%	12.2%	11.6%	11.5%		
Road	2.40	0.83	0.40	0.42	0.59	0.75	0.65	0.67	-72%	-8.15%
Rail	..	0.09	0.03	0.03	0.07	0.04	0.05	0.05
Domestic Aviation	0.03	0.04
International Aviation	0.23	0.03	0.06	0.05	0.06	0.04
Domestic Navigation
International Maritime
Other Transport	0.04	0.16	0.08	0.05	0.06	0.07	0.15	0.15	275%	9.21%
GHG Emissions										
UNFCCC GHG emissions (Mt CO2 eq.)*
UNFCCC Transport GHG (Mt CO2 eq.)*
<i>Transport as a percentage of total</i>

*includes international aviation and shipping