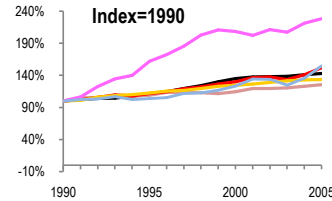
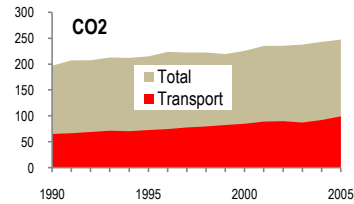


Netherlands

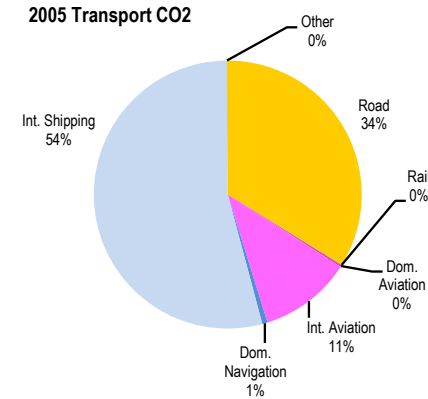
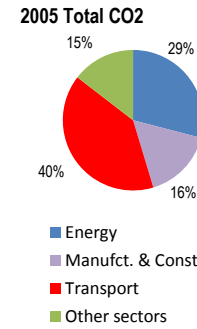
Total CO2 from Fuel Combustion including International Air and Maritime (2005)

EU	247.6Mt	N.Am	Asia-Pac	Other ITF
----	---------	------	----------	-----------

Change 1990-2005*	Mt	2005	T per capita	2005	Kg/\$2000 PPP	2005
CO2	26%	247.64	15%	15.17	12%	0.52
Transport CO2	52%	99.33	39%	6.09	6%	0.21
Road CO2	33%	33.52	22%	2.05	7%	0.07
Aviation CO2	128%	11.28	109%	0.69	59%	0.02
Shipping CO2	55%	54.27	42%	3.33	8%	0.11



— GDP
— Mt CO2
— Transport CO2
— Road CO2
— Aviation CO2
— Shipping CO2



Transport and the Economy	1990	1995	2000	2001	2002	2003	2004	2005	1990-2005	% per year
Population (millions)	14.95	15.46	15.92	16.04	16.15	16.22	16.28	16.32	9%	0.59%
GDP (billion 2000 US\$, PPP)	334.31	370.64	451.93	460.64	460.99	462.54	471.57	478.78	43%	2.42%
Road passenger km (million pkm)	150400	145600	156553	157083	159627	161700	167549	164834	10%	0.61%
Road freight tonne km (million tkm)	66496	70479	83248	83078	81338	84163	87271	88036	32%	1.89%
Road pkm/capita	10060	9418	9834	9793	9884	9969	10292	10100	0%	0.03%
Road freight tkm/\$ of GDP	0.20	0.19	0.18	0.18	0.18	0.18	0.19	0.18	-8%	-0.52%
Motorisation (Cars/1000 inhabitants)	342	361	398	408	416	423	424	428	25%	1.51%
CO2 Emissions										
IEA CO2 from fuel combustion (Mt CO2)*	197.04	215.16	225.79	235.26	235.62	237.88	242.98	247.64	26%	1.54%
IEA transport CO2 (Mt CO2)*	65.34	72.83	85.07	89.16	89.99	87.38	92.22	99.33	52%	2.83%
<i>Transport as a percentage of total</i>	33.2%	33.8%	37.7%	37.9%	38.2%	36.7%	38.0%	40.1%		
Road	25.11	28.21	31.27	31.77	32.46	33.03	33.45	33.52	33%	1.94%
Rail	0.12	0.13	0.14	0.13	0.13	0.12	0.14	0.10	-17%	-1.21%
Domestic Aviation	0.49	0.34	0.28	0.20	0.22	0.20	0.19	0.22	-55%	-5.20%
International Aviation	4.45	7.66	10.01	9.80	10.22	10.06	10.76	11.06	149%	6.26%
Domestic Navigation	0.54	0.53	1.02	0.99	0.94	0.87	0.89	0.64	19%	1.14%
International Maritime	34.53	35.85	42.25	46.17	45.91	42.99	46.68	53.63	55%	2.98%
Other Transport	0.10	0.11	0.10	0.10	0.11	0.11	0.11	0.16	60%	3.18%
GHG Emissions										
UNFCCC GHG emissions (Mt CO2 eq.)*	251.98	268.21	267.07	272.94	272.34	270.27	275.97	277.29	10%	0.64%
UNFCCC Transport GHG (Mt CO2 eq.)*	65.45	72.89	85.57	90.18	90.76	88.23	92.90	100.37	53%	2.89%
<i>Transport as a percentage of total</i>	26.0%	27.2%	32.0%	33.0%	33.3%	32.6%	33.7%	36.2%		

*includes international aviation and shipping