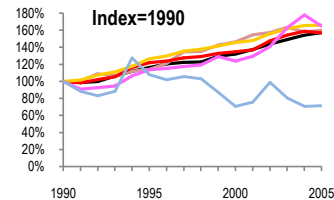
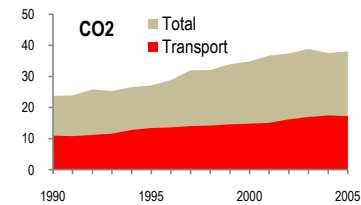


New Zealand

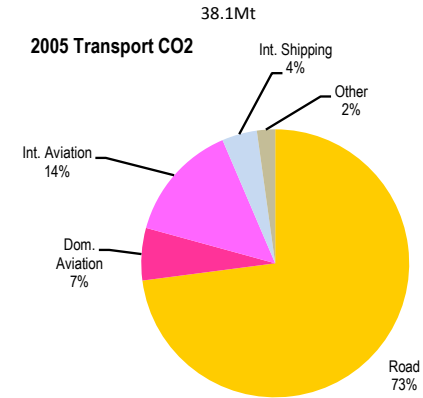
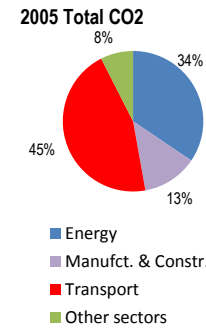
Total CO2 from Fuel Combustion including International Air and Maritime (2005)

EU N.Am Asia-Pac Other ITF

Change 1990-2005*	Mt	2005	T per capita	2005	Kg/\$2000 PPP	2005
CO2	60%	38.08	31%	9.29	2%	0.40
Transport CO2	57%	17.26	29%	4.21	0%	0.18
Road CO2	66%	12.59	36%	3.07	5%	0.13
Aviation CO2	65%	3.56	35%	0.87	5%	0.04
Shipping CO2	28%	0.73	41%	0.18	55%	0.01



— GDP
— Mt CO2
— Transport CO2
— Road CO2
— Aviation CO2
— Shipping CO2



Transport and the Economy	1990	1995	2000	2001	2002	2003	2004	2005	1990-2005	% per year
Population (millions)	3.36	3.68	3.86	3.89	3.94	4.01	4.06	4.10	22%	1.34%
GDP (billion 2000 US\$, PPP)	60.63	70.66	80.18	83.34	87.23	90.34	93.67	95.45	57%	3.07%
Road passenger km (million pkm)
Road freight tonne km (million tkm)	..	11205	18423	19166	19976	20950	22048	18378
Road pkm/capita
Road freight tkm/\$ of GDP	..	0.16	0.23	0.23	0.23	0.23	0.24	0.19
Motorisation (Cars/1000 inhabitants)	447	452	494	498	505	509	529	541	21%	1.28%
CO2 Emissions										
IEA CO2 from fuel combustion (Mt CO2)*	23.78	27.14	34.87	36.78	37.44	38.90	37.58	38.08	60%	3.19%
IEA transport CO2 (Mt CO2)*	11.00	13.43	14.83	15.10	16.23	17.00	17.48	17.26	57%	3.05%
<i>Transport as a percentage of total</i>	46.3%	49.5%	42.5%	41.1%	43.3%	43.7%	46.5%	45.3%		
Road	7.59	9.61	11.07	11.22	11.83	12.29	12.58	12.59	66%	3.43%
Rail	0.00	0.01	0.00	0.00	0.00	0.00	0.00	0.00
Domestic Aviation	0.81	0.88	0.91	0.90	1.10	1.22	1.26	1.09	35%	2.00%
International Aviation	1.35	1.58	1.77	1.90	1.94	2.30	2.59	2.47	83%	4.11%
Domestic Navigation
International Maritime	1.02	1.10	0.72	0.77	1.01	0.82	0.72	0.73	-28%	-2.21%
Other Transport	0.23	0.25	0.36	0.31	0.35	0.37	0.33	0.38	65%	3.40%
GHG Emissions										
UNFCCC GHG emissions (Mt CO2 eq.)*	64.30	67.18	72.85	75.78	76.64	78.86	78.46	80.41	25%	1.50%
UNFCCC Transport GHG (Mt CO2 eq.)*	11.18	13.74	14.98	15.53	16.42	17.16	17.66	17.46	56%	3.02%
<i>Transport as a percentage of total</i>	17.4%	20.5%	20.6%	20.5%	21.4%	21.8%	22.5%	21.7%		

*includes international aviation and shipping