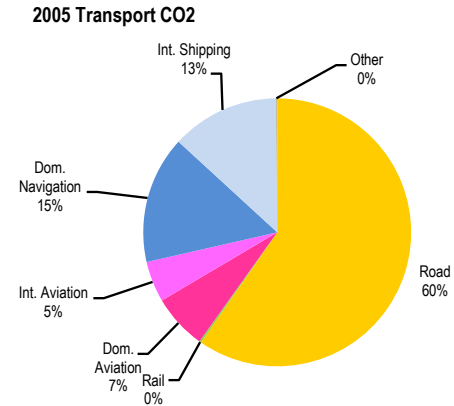
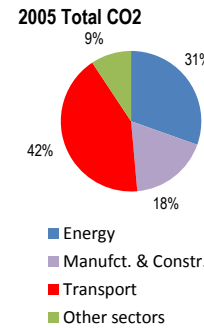
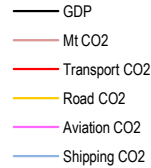
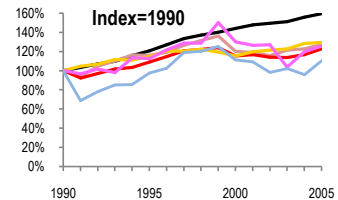
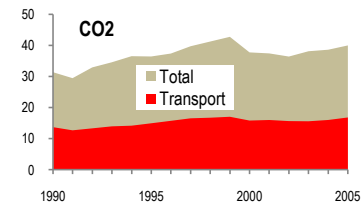


Norway

Total CO2 from Fuel Combustion including International Air and Maritime (2005)

EU	N.Am	Asia-Pac	Other ITF
			40Mt

Change 1990-2005*	Mt	2005	T per capita	2005	Kg/\$2000 PPP	2005
CO2	27%	40.02	17%	8.66	20%	0.22
Transport CO2	23%	16.84	13%	3.65	23%	0.09
Road CO2	30%	10.04	19%	2.17	19%	0.06
Aviation CO2	26%	1.95	15%	0.42	21%	0.01
Shipping CO2	10%	4.78	1%	1.03	31%	0.03



Transport and the Economy	1990	1995	2000	2001	2002	2003	2004	2005	1990-2005	% per year
Population (millions)	4.24	4.36	4.49	4.51	4.54	4.57	4.59	4.62	9%	0.57%
GDP (billion 2000 US\$, PPP)	113.08	136.58	162.99	167.44	169.29	171.20	176.47	180.46	60%	3.17%
Road passenger km (million pkm)	47327	48482	53091	54162	55517	56344	56936	57547	22%	1.31%
Road freight tonne km (million tkm)	11919	16562	18277	18901	18901	19166	21704	22785	91%	4.41%
Road pkm/capita	11162	11120	11824	12009	12228	12329	12404	12456	12%	0.73%
Road freight tkm/\$ of GDP	0.11	0.12	0.11	0.11	0.11	0.11	0.12	0.13	20%	1.21%
Motorisation (Cars/1000 inhabitants)	380	386	412	415	418	423	431	439	16%	0.97%
CO2 Emissions										
IEA CO2 from fuel combustion (Mt CO2)*	31.41	36.46	37.78	37.45	36.44	38.15	38.64	40.02	27%	1.63%
IEA transport CO2 (Mt CO2)*	13.72	14.96	15.84	16.02	15.67	15.61	16.03	16.84	23%	1.38%
<i>Transport as a percentage of total</i>	43.7%	41.0%	41.9%	42.8%	43.0%	40.9%	41.5%	42.1%		
Road	7.74	8.88	8.94	9.27	9.41	9.51	9.94	10.04	30%	1.75%
Rail	0.10	0.10	0.05	0.05	0.03	0.04	0.05	0.04	-60%	-5.93%
Domestic Aviation	0.26	0.62	0.93	0.85	0.75	0.97	1.12	1.12	331%	10.23%
International Aviation	1.29	1.13	1.09	1.11	1.22	0.64	0.74	0.83	-36%	-2.90%
Domestic Navigation	2.92	2.01	2.23	2.18	2.16	2.66	2.54	2.59	-11%	-0.80%
International Maritime	1.41	2.22	2.59	2.55	2.09	1.77	1.62	2.19	55%	2.98%
Other Transport	0.00	0.00	0.01	0.01	0.01	0.02	0.02	0.03
GHG Emissions										
UNFCCC GHG emissions (Mt CO2 eq.)*	49.75	49.85	53.55	54.80	53.52	54.24	54.89	54.15	9%	0.57%
UNFCCC Transport GHG (Mt CO2 eq.)*	11.33	12.37	13.37	13.70	13.54	13.86	14.34	14.65	29%	1.73%
<i>Transport as a percentage of total</i>	22.8%	24.8%	25.0%	25.0%	25.3%	25.5%	26.1%	27.0%		

*includes international aviation and shipping