

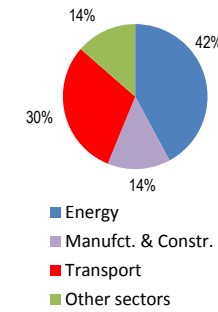
OECD

Total CO2 from Fuel Combustion including International Air and Maritime (2005)

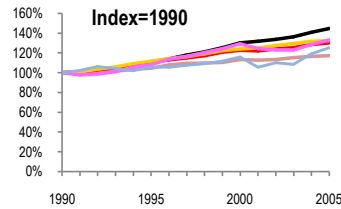
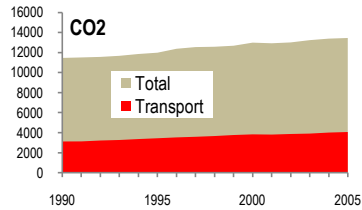
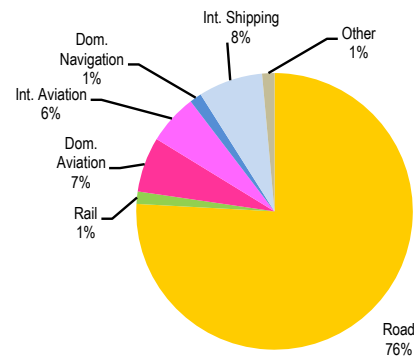
OECD	Rest of ITF	Top 10 non-ITF	Rest of World
------	-------------	----------------	---------------

Change 1990-2005*	Mt	2005	T per capita	2005	Kg/\$2000 PPP	2005
CO2	17%	13455.07	5%	11.49	19%	0.44
Transport CO2	30%	4066.56	16%	3.47	10%	0.13
Road CO2	32%	3084.84	18%	2.63	9%	0.10
Aviation CO2	33%	501.09	19%	0.43	8%	0.02
Shipping CO2	25%	363.18	12%	0.31	13%	0.01

2005 Total CO2



2005 Transport CO2



— GDP
 — Mt CO2
 — Transport CO2
 — Road CO2
 — Aviation CO2
 — Shipping CO2

Transport and the Economy	1990	1995	2000	2001	2002	2003	2004	2005	1990-2005	% per year
Population (millions)	1043.68	1089.17	1130.29	1138.75	1147.15	1155.72	1164.09	1171.52	12%	0.77%
GDP (billion 2000 US\$, PPP)	20945.31	23193.63	27277.81	27609.82	28045.97	28609.48	29536.70	30320.86	45%	2.50%
CO2 Emissions										
IEA CO2 from fuel combustion (Mt CO2)*	11463.83	11988.31	12992.34	12927.76	13012.55	13239.68	13391.67	13455.07	17%	1.07%
IEA transport CO2 (Mt CO2)*	3118.22	3441.88	3830.92	3808.38	3869.00	3908.61	4009.98	4066.56	30%	1.79%
<i>Transport as a percentage of total</i>										
Road	2329.28	2602.96	2889.81	2916.11	2972.02	3022.95	3070.78	3084.84	32%	1.89%
Rail	57.53	54.39	52.63	51.06	51.20	51.55	54.12	58.78	2%	0.14%
Domestic Aviation	236.50	235.54	265.44	257.21	253.24	249.68	259.16	262.15	11%	0.69%
International Aviation	139.78	171.94	220.53	211.10	210.61	213.48	224.61	238.94	71%	3.64%
Domestic Navigation	57.49	59.80	61.22	58.96	59.06	62.96	62.85	56.82	-1%	-0.08%
International Maritime	232.42	247.10	275.19	247.60	260.65	251.80	282.43	306.36	32%	1.86%
Other Transport	65.22	70.15	66.10	66.34	62.22	56.19	56.03	58.67	-10%	-0.70%

*includes international aviation and shipping