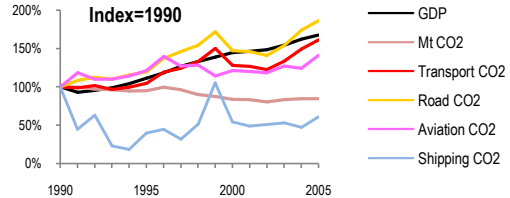
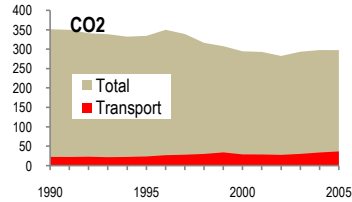
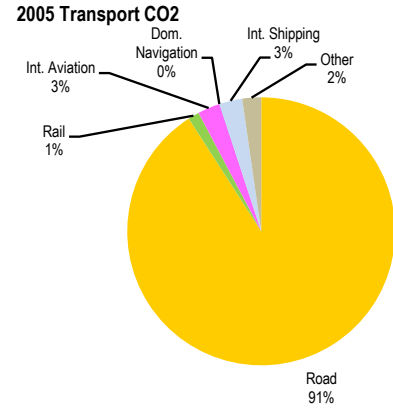
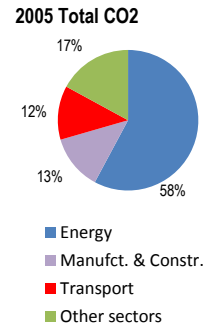


Poland

Total CO2 from Fuel Combustion including International Air and Maritime (2005)

EU	N.Am	Asia-Pac	Other ITF
----	------	----------	-----------

Change 1990-2005*	Mt	2005	297.8Mt	T per capita	2005	Kg/\$2000 PPP	2005
CO2	15%	297.82	15%	7.80	49%	0.63	
Transport CO2	61%	36.93	61%	0.97	4%	0.08	
Road CO2	87%	33.57	87%	0.88	11%	0.07	
Aviation CO2	41%	0.99	41%	0.03	16%	0.00	
Shipping CO2	39%	1.03	39%	0.03	64%	0.00	



Transport and the Economy	1990	1995	2000	2001	2002	2003	2004	2005	1990-2005	% per year
Population (millions)	38.12	38.59	38.26	38.25	38.23	38.20	38.18	38.16	0%	0.01%
GDP (billion 2000 US\$, PPP)	282.42	314.49	409.07	413.65	419.45	435.56	458.50	473.37	68%	3.50%
Road passenger km (million pkm)	114400	144724	181435	188696	196695	202396	211618	226614	98%	4.66%
Road freight tonne km (million tkm)	138744	133775	150565	147241	150045	160305	188670	196377	42%	2.34%
Road pkm/capita	3001	3750	4742	4933	5145	5298	5543	5939	98%	4.66%
Road freight tkm/\$ of GDP	0.49	0.43	0.37	0.36	0.36	0.37	0.41	0.41	-16%	-1.12%
Motorisation (Cars/1000 inhabitants)	138	195	261	275	288	294	314
CO2 Emissions										
IEA CO2 from fuel combustion (Mt CO2)*	351.48	334.51	294.65	293.18	282.75	293.73	297.88	297.82	-15%	-1.10%
IEA transport CO2 (Mt CO2)*	22.89	23.99	29.28	29.07	28.05	30.58	34.21	36.93	61%	3.24%
<i>Transport as a percentage of total</i>	6.5%	7.2%	9.9%	9.9%	9.9%	10.4%	11.5%	12.4%		
Road	17.98	21.53	26.48	26.28	25.38	27.69	31.31	33.57	87%	4.25%
Rail	2.46	0.88	0.52	0.51	0.49	0.51	0.51	0.50	-80%	-10.08%
Domestic Aviation
International Aviation	0.70	0.85	0.85	0.84	0.83	0.89	0.87	0.99	41%	2.34%
Domestic Navigation	0.34	0.06	0.02	0.01	0.01	0.00	0.00	0.01	-97%	-20.95%
International Maritime	1.35	0.61	0.90	0.82	0.85	0.90	0.80	1.02	-24%	-1.85%
Other Transport	0.06	0.06	0.51	0.61	0.49	0.59	0.72	0.84	1300%	19.24%
GHG Emissions										
UNFCCC GHG emissions (Mt CO2 eq.)*	487.37	454.39	406.83	403.76	388.90	403.34	398.31	400.69	-18%	-1.30%
UNFCCC Transport GHG (Mt CO2 eq.)*	29.95	31.75	35.81	34.87	34.45	35.25	36.67	38.35	28%	1.66%
<i>Transport as a percentage of total</i>	6.1%	7.0%	8.8%	8.6%	8.9%	8.7%	9.2%	9.6%		

*includes international aviation and shipping