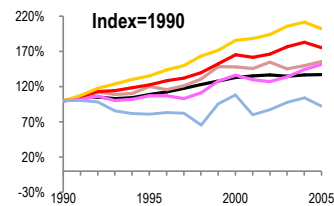
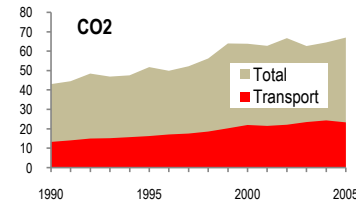


Portugal

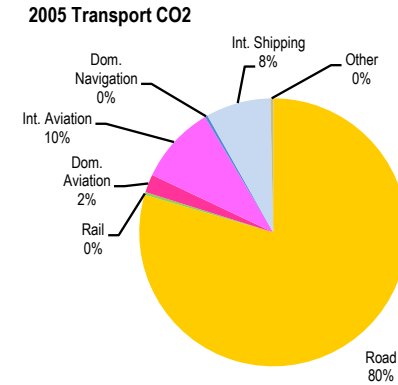
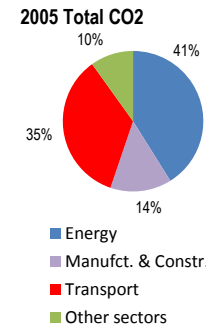
Total CO2 from Fuel Combustion including International Air and Maritime (2005)

EU	67.1Mt	N.Am	Asia-Pac	Other ITF
----	--------	------	----------	-----------

Change 1990-2005*	Mt	2005	T per capita	2005	Kg/\$2000 PPP	2005
CO2	56%	67.05	48%	6.36	13%	0.35
Transport CO2	76%	23.38	66%	2.22	28%	0.12
Road CO2	102%	18.59	92%	1.76	47%	0.10
Aviation CO2	52%	2.72	44%	0.26	11%	0.01
Shipping CO2	8%	1.91	13%	0.18	33%	0.01



— GDP
— Mt CO2
— Transport CO2
— Road CO2
— Aviation CO2
— Shipping CO2



Transport and the Economy	1990	1995	2000	2001	2002	2003	2004	2005	1990-2005	% per year
Population (millions)	10.00	10.03	10.23	10.29	10.37	10.44	10.50	10.55	6%	0.36%
GDP (billion 2000 US\$, PPP)	141.37	153.84	187.94	191.73	193.19	191.03	193.30	194.07	37%	2.13%
Road passenger km (million pkm)	50800	74490	94204	95009	95580	96541	97809	97518	92%	4.44%
Road freight tonne km (million tkm)	12510	13138	17135	19312	17833	16713	19727	19847	59%	3.12%
Road pkm/capita	5080	7427	9209	9233	9217	9247	9315	9243	82%	4.07%
Road freight tkm/\$ of GDP	0.09	0.09	0.09	0.10	0.09	0.09	0.10	0.10	16%	0.97%
Motorisation (Cars/1000 inhabitants)	255	374	514	538	558	574
CO2 Emissions										
IEA CO2 from fuel combustion (Mt CO2)*	43.08	51.84	63.86	62.80	66.75	62.70	64.54	67.05	56%	2.99%
IEA transport CO2 (Mt CO2)*	13.32	16.33	22.03	21.56	22.15	23.54	24.40	23.38	76%	3.82%
<i>Transport as a percentage of total</i>	30.9%	31.5%	34.5%	34.3%	33.2%	37.5%	37.8%	34.9%		
Road	9.20	12.47	17.09	17.35	17.86	18.93	19.48	18.59	102%	4.80%
Rail	0.17	0.17	0.18	0.13	0.11	0.10	0.09	0.08	-53%	-4.90%
Domestic Aviation	0.25	0.37	0.69	0.52	0.45	0.46	0.46	0.51	104%	4.87%
International Aviation	1.54	1.55	1.75	1.81	1.83	1.94	2.13	2.21	44%	2.44%
Domestic Navigation	0.14	0.15	0.14	0.16	0.28	0.20	0.08	0.08	-43%	-3.66%
International Maritime	1.93	1.53	2.10	1.50	1.53	1.83	2.08	1.83	-5%	-0.35%
Other Transport	0.09	0.09	0.08	0.09	0.09	0.08	0.08	0.08	-11%	-0.78%
GHG Emissions										
UNFCCC GHG emissions (Mt CO2 eq.)*	63.12	74.59	86.31	87.29	91.97	86.88	88.91	90.22	43%	2.41%
UNFCCC Transport GHG (Mt CO2 eq.)*	13.24	16.92	23.46	23.55	24.13	24.07	24.33	24.64	86%	4.23%
<i>Transport as a percentage of total</i>	21.0%	22.7%	27.2%	27.0%	26.2%	27.7%	27.4%	27.3%		

*includes international aviation and shipping