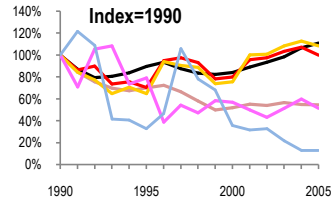
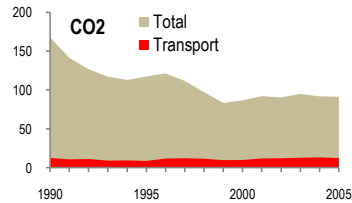


# Romania

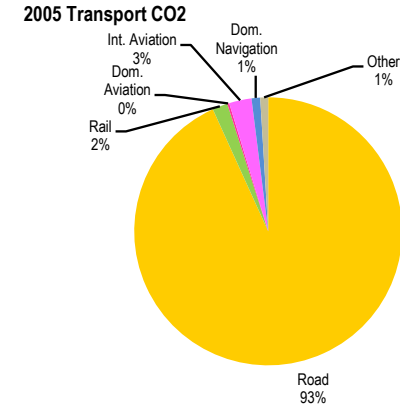
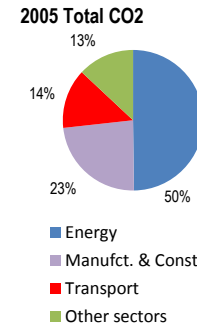
Total CO2 from Fuel Combustion including International Air and Maritime (2005)

EU	N.Am	Asia-Pac	Other ITF
----	------	----------	-----------

Change 1990-2005*	Mt	2005	91.3Mt T per capita	2005	Kg/\$2000 PPP	2005
CO2	46%	91.3	42%	4.22	51%	0.52
Transport CO2		12.53	7%	0.58	10%	0.07
Road CO2	8%	11.68	16%	0.54	2%	0.07
Aviation CO2	49%	0.37	45%	0.02	54%	0.00
Shipping CO2	87%	0.13	86%	0.01	88%	0.00



— GDP  
— Mt CO2  
— Transport CO2  
— Road CO2  
— Aviation CO2  
— Shipping CO2



Transport and the Economy	1990	1995	2000	2001	2002	2003	2004	2005	1990-2005	% per year
Population (millions)	23.21	22.68	22.44	22.13	21.80	21.74	21.69	21.63	-7%	-0.47%
GDP (billion 2000 US\$, PPP)	156.98	140.97	132.23	139.76	146.89	154.53	167.51	174.38	11%	0.70%
Road passenger km (million pkm)	24007	12343	7700	7073	5282	9443	9438	11812	-51%	-4.62%
Road freight tonne km (million tkm)	69613	37408	31887	33121	33894	35690	39266	43337	-38%	-3.11%
Road pkm/capita	1034	544	343	320	242	434	435	546	-47%	-4.17%
Road freight tkm/\$ of GDP	0.44	0.27	0.24	0.24	0.23	0.23	0.23	0.25	-44%	-3.79%
Motorisation (Cars/1000 inhabitants)	56	97	124	130	136	142	149	156	179%	7.09%
<b>CO2 Emissions</b>										
IEA CO2 from fuel combustion (Mt CO2)*	167.62	117.50	86.86	92.23	90.51	95.05	91.91	91.30	-46%	-3.97%
IEA transport CO2 (Mt CO2)*	12.53	8.82	10.02	12.02	12.24	12.95	13.43	12.53	0%	0.00%
<i>Transport as a percentage of total</i>	7.5%	7.5%	11.5%	13.0%	13.5%	13.6%	14.6%	13.7%		
Road	10.77	6.99	8.16	10.78	10.85	11.68	12.15	11.68	8%	0.54%
Rail	0.03	0.89	0.92	0.46	0.61	0.54	0.62	0.23	667%	14.54%
Domestic Aviation	0.00	0.01	0.02	0.01	0.01	0.01	0.01	0.03	..	..
International Aviation	0.72	0.56	0.39	0.35	0.30	0.36	0.42	0.34	-53%	-4.88%
Domestic Navigation	1.01	0.33	0.36	0.32	0.33	0.22	0.13	0.13	-87%	-12.77%
International Maritime	..	..	..	..	..	..	..	..	..	..
Other Transport	0.00	0.04	0.17	0.10	0.14	0.14	0.10	0.12	..	..
<b>GHG Emissions</b>										
UNFCCC GHG emissions (Mt CO2 eq.)*	248.73	186.97	138.58	143.00	150.57	157.51	160.06	153.65	-38%	-3.16%
UNFCCC Transport GHG (Mt CO2 eq.)*	8.73	8.65	9.69	11.27	12.18	12.27	14.69	12.05	38%	2.17%
<i>Transport as a percentage of total</i>	3.5%	4.6%	7.0%	7.9%	8.1%	7.8%	9.2%	7.8%		

\*includes international aviation and shipping