

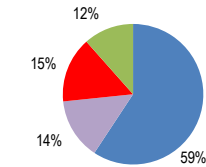
Russia

Total CO2 from Fuel Combustion including International Air and Maritime (2005)

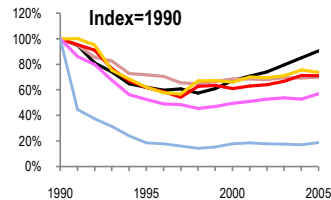
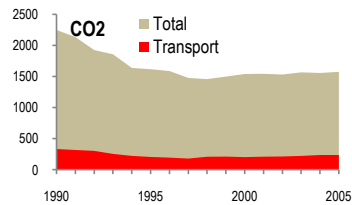
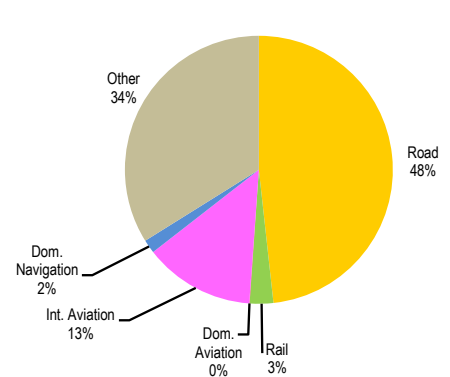
EU	N.Am	Asia-Pac	Other ITF
----	------	----------	-----------

Change 1990-2005*	Mt	2005	T per capita	2005	Kg/\$2000 PPP	2005
CO2	30%	1575.44	27%	11.01	23%	1.14
Transport CO2	29%	237.65	26%	1.66	21%	0.17
Road CO2	26%	114.69	23%	0.80	18%	0.08
Aviation CO2	43%	31.79	41%	0.22	37%	0.02
Shipping CO2	81%	3.89	80%	0.03	79%	0.00

2005 Total CO2



2005 Transport CO2



— GDP
— Mt CO2
— Transport CO2
— Road CO2
— Aviation CO2
— Shipping CO2

Transport and the Economy	1990	1995	2000	2001	2002	2003	2004	2005	1990-2005	% per year
Population (millions)	148.29	148.14	146.30	145.95	145.30	144.60	143.85	143.11	-3%	-0.24%
GDP (billion 2000 US\$, PPP)	1522.99	946.06	1024.98	1077.18	1128.27	1211.18	1297.70	1380.75	-9%	-0.65%
Road passenger km (million pkm)	262152	188246	164369	154861	149914	138454	129436	96284	-63%	-6.46%
Road freight tonne km (million tkm)	4276002	2129557	2341894	2473485	2657937	2925424	3192426	3294068	-23%	-1.72%
Road pkm/capita	1768	1271	1124	1061	1032	957	900	673	-62%	-6.24%
Road freight tkm/\$ of GDP	2.81	2.25	2.28	2.30	2.36	2.42	2.46	2.39	-15%	-1.08%
Motorisation (Cars/1000 inhabitants)	60	96	138	145	154	161	167	178	194%	7.46%
CO2 Emissions										
IEA CO2 from fuel combustion (Mt CO2)*	2249.21	1617.90	1540.97	1544.67	1532.45	1567.71	1558.07	1575.44	-30%	-2.35%
IEA transport CO2 (Mt CO2)*	333.69	206.25	203.76	210.68	214.19	223.35	237.72	237.65	-29%	-2.24%
<i>Transport as a percentage of total</i>	14.8%	12.7%	13.2%	13.6%	14.0%	14.2%	15.3%	15.1%		
Road	155.07	96.30	102.43	108.70	107.96	110.31	117.22	114.69	-26%	-1.99%
Rail	19.01	6.79	6.57	5.55	6.20	5.80	6.51	6.76	-64%	-6.66%
Domestic Aviation	1.06	0.25	0.10	0.11	0.11	0.11	0.11	0.11	-90%	-14.02%
International Aviation	54.68	29.00	27.51	28.30	29.36	29.84	29.30	31.68	-42%	-3.57%
Domestic Navigation	14.59	3.80	3.65	3.84	3.69	3.61	3.49	3.89	-73%	-8.44%
International Maritime	5.97
Other Transport	83.31	70.11	63.50	64.18	66.87	73.68	81.09	80.52	-3%	-0.23%
GHG Emissions										
UNFCCC GHG emissions (Mt CO2 eq.)*	2993.40	2112.19	2008.31	2023.51	2016.67	2084.44	2105.83	2151.21	-28%	-2.18%
UNFCCC Transport GHG (Mt CO2 eq.)*	335.46	202.21	199.58	206.39	209.95	218.97	233.77	203.24	-39%	-3.29%
<i>Transport as a percentage of total</i>	11.2%	9.6%	9.9%	10.2%	10.4%	10.5%	11.1%	9.4%		

*includes international aviation and shipping