

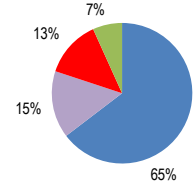
Serbia-Montenegro

Total CO2 from Fuel Combustion including International Air and Maritime (2005)

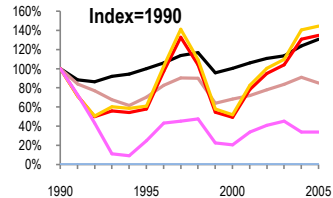
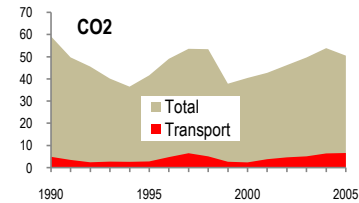
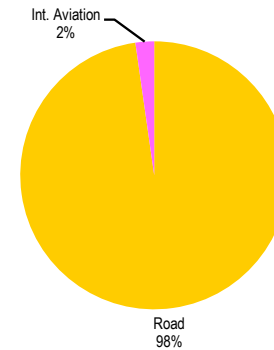
EU	N.Am	Asia-Pac	Other ITF	50.5 Mt
----	------	----------	-----------	---------

Change 1990-2005*	Mt	2005	T per capita	2005	Kg/\$2000 PPP	2005
CO2	15%	50.52	11%	6.27	35%	2.16
Transport CO2	35%	6.66	76%	0.83	3%	0.28
Road CO2	45%	6.51	89%	0.81	10%	0.28
Aviation CO2	66%	0.15	55%	0.02	74%	0.01
Shipping CO2		0		0.00		0.00

2005 Total CO2



2005 Transport CO2



— GDP
— Mt CO2
— Transport CO2
— Road CO2
— Aviation CO2
— Shipping CO2

Transport and the Economy	1990	1995	2000	2001	2002	2003	2004	2005	1990-2005	% per year
Population (millions)	10.53	10.55	8.14	8.12	8.12	8.10	8.09	8.06	-23%	-1.77%
GDP (billion 2000 US\$, PPP)	17.86	17.91	17.96	18.96	19.77	20.25	22.13	23.39	31%	1.81%
Road passenger km (million pkm)	23264	12896	3056	4257	4086	3865	3676	4820	-79%	-9.96%
Road freight tonne km (million tkm)	19102	6299	3581	3784	4232	4313	4997	6242	-67%	-7.19%
Road pkm/capita	2209	1222	375	524	503	477	454	598	-73%	-8.34%
Road freight tkm/\$ of GDP	1.07	0.35	0.20	0.20	0.21	0.21	0.23	0.27	-75%	-8.84%
Motorisation (Cars/1000 inhabitants)	133	..	171	182	178	185	192
CO2 Emissions										
IEA CO2 from fuel combustion (Mt CO2)*	59.26	41.65	40.47	42.78	46.25	49.70	53.90	50.52	-15%	-1.06%
IEA transport CO2 (Mt CO2)*	4.94	2.86	2.43	3.87	4.70	5.15	6.47	6.66	35%	2.01%
<i>Transport as a percentage of total</i>	8.3%	6.9%	6.0%	9.0%	10.2%	10.4%	12.0%	13.2%		
Road	4.50	2.75	2.34	3.72	4.52	4.95	6.32	6.51	45%	2.49%
Rail
Domestic Aviation
International Aviation	0.44	0.11	0.09	0.15	0.18	0.20	0.15	0.15	-66%	-6.92%
Domestic Navigation
International Maritime
Other Transport
GHG Emissions										
UNFCCC GHG emissions (Mt CO2 eq.)*
UNFCCC Transport GHG (Mt CO2 eq.)*
<i>Transport as a percentage of total</i>

*includes international aviation and shipping