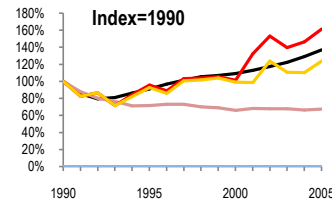
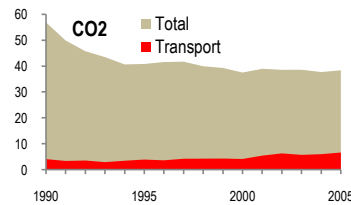
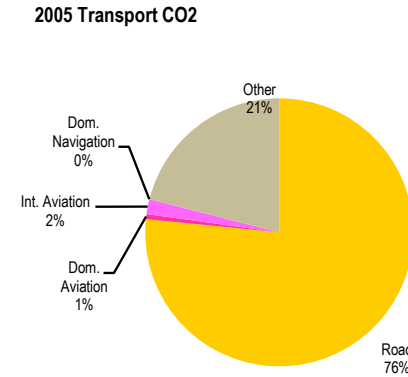
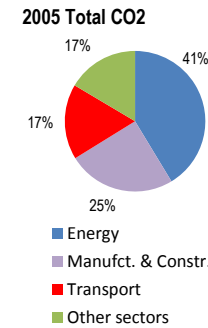


# Slovak Republic

Total CO2 from Fuel Combustion including International Air and Maritime (2005)

EU	N.Am	Asia-Pac	Other ITF
----	------	----------	-----------

Change 1990-2005*	Mt	2005	38.4Mt	T per capita	2005	Kg/\$2000 PPP	2005
CO2	33%	38.42	34%	7.13	51%	0.52	
Transport CO2	62%	6.66	59%	1.24	18%	0.09	
Road CO2	24%	5.1	22%	0.95	10%	0.07	
Aviation CO2		0.16		0.03		0.00	
Shipping CO2		0		0.00		0.00	



Legend for Index=1990 chart:

- GDP
- Mt CO2
- Transport CO2
- Road CO2
- Aviation CO2
- Shipping CO2

Transport and the Economy	1990	1995	2000	2001	2002	2003	2004	2005	1990-2005	% per year
Population (millions)	5.30	5.36	5.40	5.40	5.38	5.38	5.38	5.39	2%	0.11%
GDP (billion 2000 US\$, PPP)	53.56	48.89	58.58	60.47	62.96	65.57	69.13	73.36	37%	2.12%
Road passenger km (million pkm)	0	29168	32364	32309	33214	32981	32214	33349	..	..
Road freight tonne km (million tkm)	0	41678	26958	25743	25906	27520	28940	32693	..	..
Road pkm/capita	0	5442	5993	5983	6174	6130	5988	6187	..	..
Road freight tkm/\$ of GDP	0.00	0.85	0.46	0.43	0.41	0.42	0.42	0.45	..	..
Motorisation (Cars/1000 inhabitants)	165	190	236	239	247	252	222	242	46%	2.58%
<b>CO2 Emissions</b>										
IEA CO2 from fuel combustion (Mt CO2)*	56.96	40.86	37.54	39.00	38.61	38.64	37.74	38.42	-33%	-2.59%
IEA transport CO2 (Mt CO2)*	4.12	3.94	4.17	5.46	6.32	5.76	6.03	6.66	62%	3.25%
<i>Transport as a percentage of total</i>	7.2%	9.6%	11.1%	14.0%	16.4%	14.9%	16.0%	17.3%		
Road	4.12	3.82	4.09	4.07	5.11	4.57	4.55	5.10	24%	1.43%
Rail	..	..	..	..	..	..	..	..	..	..
Domestic Aviation	0.00	0.00	0.00	0.00	0.00	0.00	0.00	0.04	..	..
International Aviation	..	0.12	0.08	0.09	0.14	0.10	0.08	0.12	..	..
Domestic Navigation	..	..	..	..	..	..	..	..	..	..
International Maritime	..	..	..	..	..	..	..	..	..	..
Other Transport	0.00	0.00	0.00	1.30	1.07	1.09	1.40	1.40	..	..
<b>GHG Emissions</b>										
UNFCCC GHG emissions (Mt CO2 eq.)*	72.18	52.66	47.49	50.72	48.82	49.17	48.68	47.96	-34%	-2.69%
UNFCCC Transport GHG (Mt CO2 eq.)*	5.16	4.49	4.38	5.00	5.14	5.26	5.55	6.52	26%	1.57%
<i>Transport as a percentage of total</i>	7.1%	8.5%	9.2%	9.9%	10.5%	10.7%	11.4%	13.6%		

\*includes international aviation and shipping