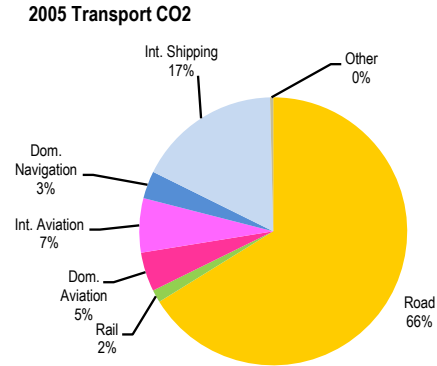
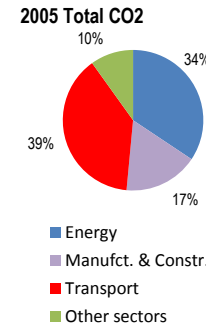
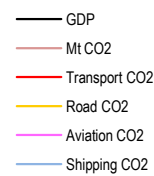
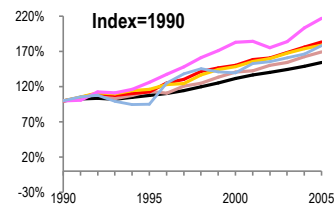
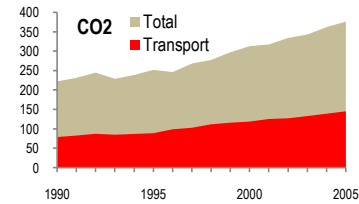


Spain

Total CO2 from Fuel Combustion including International Air and Maritime (2005)

EU		N.Am	Asia-Pac	Other ITF
----	--	------	----------	-----------

Change 1990-2005*	Mt	2005	T per capita	2005	Kg/\$2000 PPP	2005
CO2	69%	376.43	52%	8.67	10%	0.38
Transport CO2	84%	145.36	65%	3.35	19%	0.15
Road CO2	79%	96.21	61%	2.22	16%	0.10
Aviation CO2	117%	16.39	95%	0.38	40%	0.02
Shipping CO2	79%	29.99	60%	0.69	16%	0.03



Transport and the Economy	1990	1995	2000	2001	2002	2003	2004	2005	1990-2005	% per year
Population (millions)	39.01	39.39	40.26	40.72	41.31	42.01	42.69	43.40	11%	0.71%
GDP (billion 2000 US\$, PPP)	644.28	694.30	849.03	880.00	903.80	931.32	961.53	995.48	55%	2.94%
Road passenger km (million pkm)	207765	251189	330263	336520	362576	371137	383650	390973	88%	4.30%
Road freight tonne km (million tkm)	106358	118180	168350	181126	199569	206866	235014	245532	131%	5.74%
Road pkm/capita	5326	6377	8203	8264	8777	8834	8987	9009	69%	3.57%
Road freight tkm/\$ of GDP	0.17	0.17	0.20	0.21	0.22	0.22	0.24	0.25	49%	2.71%
Motorisation (Cars/1000 inhabitants)	308	361	433	446	453	445	458	467	52%	2.82%
CO2 Emissions										
IEA CO2 from fuel combustion (Mt CO2)*	222.36	252.14	313.05	317.48	334.23	343.12	362.09	376.43	69%	3.57%
IEA transport CO2 (Mt CO2)*	79.09	89.04	118.98	125.55	127.39	133.19	139.29	145.36	84%	4.14%
<i>Transport as a percentage of total</i>	35.6%	35.3%	38.0%	39.5%	38.1%	38.8%	38.5%	38.6%		
Road	53.69	62.35	79.72	83.77	85.86	89.93	93.37	96.21	79%	3.97%
Rail	0.67	0.91	1.54	1.64	1.61	1.79	2.04	2.22	231%	8.31%
Domestic Aviation	4.11	3.30	5.48	5.45	5.08	5.32	5.89	6.87	67%	3.48%
International Aviation	3.44	6.23	8.33	8.48	8.16	8.56	9.49	9.52	177%	7.02%
Domestic Navigation	5.24	5.91	4.35	4.33	4.36	4.87	5.03	4.83	-8%	-0.54%
International Maritime	11.56	10.08	19.10	21.38	21.82	22.23	22.93	25.16	118%	5.32%
Other Transport	0.38	0.26	0.46	0.50	0.50	0.49	0.54	0.55	45%	2.50%
GHG Emissions										
UNFCCC GHG emissions (Mt CO2 eq.)*	302.46	334.80	412.01	414.85	432.40	440.55	457.92	475.63	57%	3.06%
UNFCCC Transport GHG (Mt CO2 eq.)*	72.63	83.45	114.60	121.32	123.69	129.10	134.88	140.31	93%	4.49%
<i>Transport as a percentage of total</i>	24.0%	24.9%	27.8%	29.2%	28.6%	29.3%	29.5%	29.5%		

*includes international aviation and shipping