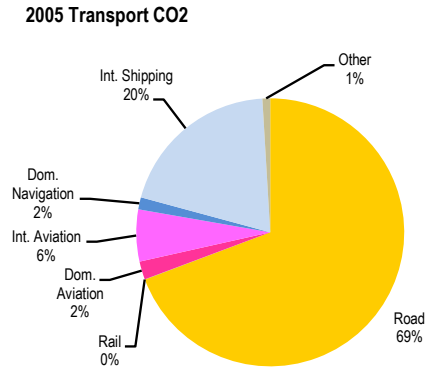
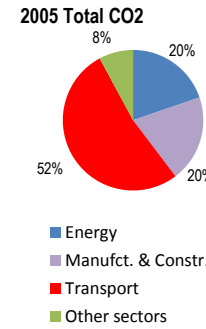
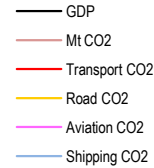
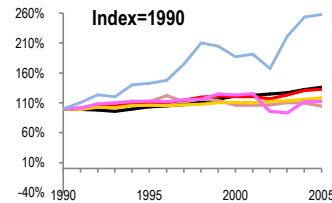
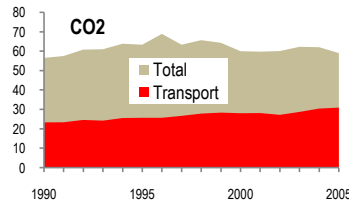


Sweden

Total CO2 from Fuel Combustion including International Air and Maritime (2005)

EU	N.Am	Asia-Pac	Other ITF
----	------	----------	-----------

Change 1990-2005*	Mt	2005	T per capita	2005	Kg/\$2000 PPP	2005
CO2	4%	59.04	1%	6.54	23%	0.22
Transport CO2	33%	30.97	26%	3.43	3%	0.11
Road CO2	18%	21.45	12%	2.38	13%	0.08
Aviation CO2	12%	2.62	7%	0.29	17%	0.01
Shipping CO2	158%	6.6	144%	0.73	89%	0.02



Transport and the Economy	1990	1995	2000	2001	2002	2003	2004	2005	1990-2005	% per year
Population (millions)	8.56	8.83	8.87	8.90	8.93	8.96	8.99	9.03	5%	0.36%
GDP (billion 2000 US\$, PPP)	198.91	205.72	241.19	243.76	248.63	252.84	263.27	270.92	36%	2.08%
Road passenger km (million pkm)	95600	97300	101400	102000	104700	105400	105900	106100	11%	0.70%
Road freight tonne km (million tkm)	36091	38684	43775	42471	44208	44289	45860	48806	35%	2.03%
Road pkm/capita	11168	11019	11432	11461	11725	11763	11780	11750	5%	0.34%
Road freight tkm/\$ of GDP	0.18	0.19	0.18	0.17	0.18	0.18	0.17	0.18	-1%	-0.05%
Motorisation (Cars/1000 inhabitants)	421	411	451	452	453	455	458	460	9%	0.60%
CO2 Emissions										
IEA CO2 from fuel combustion (Mt CO2)*	56.57	63.37	60.03	59.79	60.10	62.29	62.08	59.04	4%	0.29%
IEA transport CO2 (Mt CO2)*	23.36	25.74	28.09	28.18	27.25	28.76	30.48	30.97	33%	1.90%
<i>Transport as a percentage of total</i>	41.3%	40.6%	46.8%	47.1%	45.3%	46.2%	49.1%	52.5%		
Road	18.14	19.25	20.09	20.00	20.35	20.59	21.00	21.45	18%	1.12%
Rail	0.12	0.12	0.08	0.08	0.09	0.08	0.07	0.01	-92%	-15.27%
Domestic Aviation	1.22	0.81	0.73	0.74	0.62	0.60	0.68	0.68	-44%	-3.82%
International Aviation	1.11	1.82	2.14	2.18	1.61	1.57	1.92	1.94	75%	3.79%
Domestic Navigation	0.45	0.33	0.49	0.49	0.46	0.55	0.47	0.45	0%	0.00%
International Maritime	2.11	3.32	4.31	4.41	3.82	5.12	6.02	6.15	191%	7.39%
Other Transport	0.21	0.09	0.25	0.28	0.30	0.25	0.32	0.29	38%	2.18%
GHG Emissions										
UNFCCC GHG emissions (Mt CO2 eq.)*	75.81	78.76	75.11	75.60	75.76	77.92	78.09	75.66	0%	-0.01%
UNFCCC Transport GHG (Mt CO2 eq.)*	22.06	23.85	25.82	25.77	25.40	27.03	28.45	28.98	31%	1.84%
<i>Transport as a percentage of total</i>	29.1%	30.3%	34.4%	34.1%	33.5%	34.7%	36.4%	38.3%		

*includes international aviation and shipping