

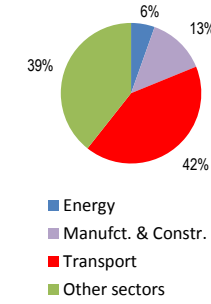
Switzerland

Total CO2 from Fuel Combustion including International Air and Maritime (2005)

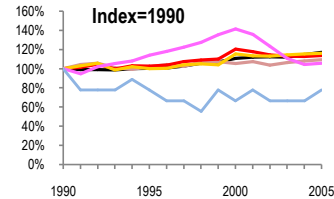
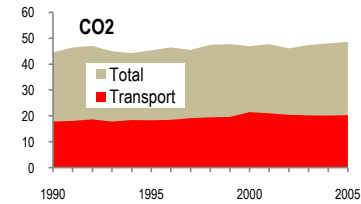
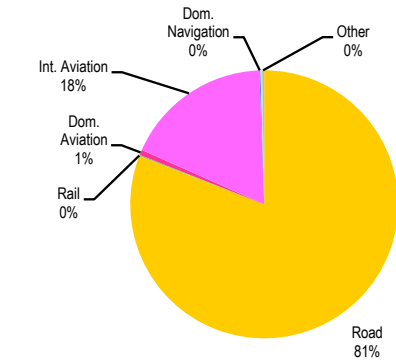
EU	N.Am	Asia-Pac	Other ITF	48.6Mt
----	------	----------	-----------	--------

Change 1990-2005*	Mt	2005	T per capita	2005	Kg/\$2000 PPP	2005
CO2	9%	48.63	1%	6.48	7%	0.21
Transport CO2	14%	20.33	3%	2.71	3%	0.09
Road CO2	16%	16.44	5%	2.19	1%	0.07
Aviation CO2	6%	3.74	4%	0.50	10%	0.02
Shipping CO2	22%	0.07	29%	0.01	34%	0.00

2005 Total CO2



2005 Transport CO2



— GDP
— Mt CO2
— Transport CO2
— Road CO2
— Aviation CO2
— Shipping CO2

Transport and the Economy	1990	1995	2000	2001	2002	2003	2004	2005	1990-2005	% per year
Population (millions)	6.80	7.08	7.21	7.29	7.34	7.41	7.45	7.50	10%	0.66%
GDP (billion 2000 US\$, PPP)	197.30	198.10	218.97	221.25	221.92	221.55	226.63	231.00	17%	1.06%
Road passenger km (million pkm)	78878	81061	85815	87316	89233	90734	92580	93648	19%	1.15%
Road freight tonne km (million tkm)	21213	24522	33075	33040	32543	32201	34248	36237	71%	3.63%
Road pkm/capita	11600	11449	11902	11978	12157	12245	12427	12486	8%	0.49%
Road freight tkm/\$ of GDP	0.11	0.12	0.15	0.15	0.15	0.15	0.15	0.16	46%	2.55%
Motorisation (Cars/1000 inhabitants)	439	456	492	498	504	507	512	515	17%	1.07%
CO2 Emissions										
IEA CO2 from fuel combustion (Mt CO2)*	44.47	45.39	46.96	47.75	46.11	47.40	48.03	48.63	9%	0.60%
IEA transport CO2 (Mt CO2)*	17.85	18.34	21.49	21.03	20.46	20.23	20.16	20.33	14%	0.87%
<i>Transport as a percentage of total</i>	40.1%	40.4%	45.8%	44.0%	44.4%	42.7%	42.0%	41.8%		
Road	14.14	14.15	16.34	16.07	15.98	16.17	16.33	16.44	16%	1.01%
Rail	0.03	0.03	0.03	0.03	0.03	0.03	0.03	0.03	0%	0.00%
Domestic Aviation	0.42	0.27	0.26	0.21	0.29	0.21	0.16	0.13	-69%	-7.52%
International Aviation	3.11	3.76	4.74	4.59	4.07	3.70	3.53	3.61	16%	1.00%
Domestic Navigation	0.03	0.02	0.03	0.03	0.03	0.03	0.03	0.03	0%	0.00%
International Maritime	0.06	0.05	0.03	0.04	0.03	0.03	0.03	0.04	-33%	-2.67%
Other Transport	0.06	0.06	0.06	0.06	0.03	0.06	0.05	0.05	-17%	-1.21%
GHG Emissions										
UNFCCC GHG emissions (Mt CO2 eq.)*	55.85	54.74	56.42	56.99	55.68	56.26	56.50	57.16	2%	0.16%
UNFCCC Transport GHG (Mt CO2 eq.)*	17.70	17.84	20.48	19.91	19.44	19.19	19.08	19.21	9%	0.55%
<i>Transport as a percentage of total</i>	31.7%	32.6%	36.3%	34.9%	34.9%	34.1%	33.8%	33.6%		

*includes international aviation and shipping