

Turkey

Total CO2 from Fuel Combustion including International Air and Maritime (2005)

EU

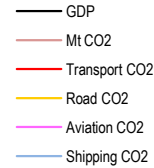
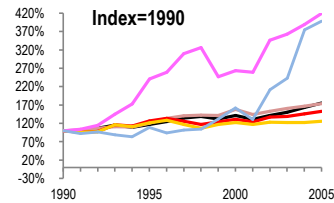
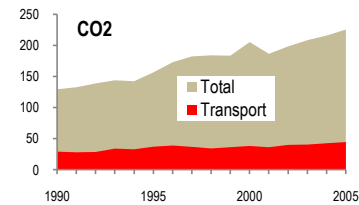
N.Am

Asia-Pac

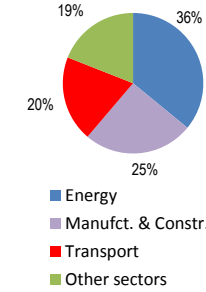
Other ITF

225.6Mt

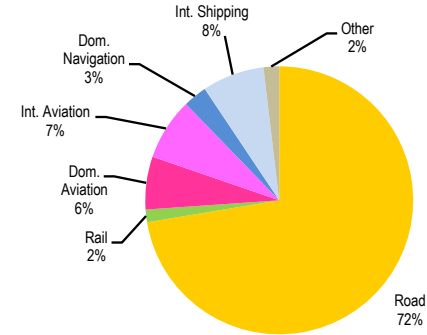
Change 1990-2005*	Mt	2005	T per capita	2005	Kg/\$2000 PPP	2005
CO2	74%	225.6	36%	3.13	1%	0.40
Transport CO2	53%	44.56	19%	0.62	13%	0.08
Road CO2	26%	32.25	2%	0.45	28%	0.06
Aviation CO2	320%	6.17	227%	0.09	139%	0.01
Shipping CO2	298%	4.62	211%	0.06	127%	0.01



2005 Total CO2



2005 Transport CO2



Transport and the Economy	1990	1995	2000	2001	2002	2003	2004	2005	1990-2005	% per year
Population (millions)	56.20	61.64	67.46	68.62	69.63	70.71	71.79	72.07	28%	1.67%
GDP (billion 2000 US\$, PPP)	323.42	378.79	459.67	425.22	458.99	485.58	528.95	567.99	76%	3.83%
Road passenger km (million pkm)
Road freight tonne km (million tkm)	136153	124128	224581	202500	182826	171441	168587	178270	31%	1.81%
Road pkm/capita
Road freight tkm/\$ of GDP	0.42	0.33	0.49	0.48	0.40	0.35	0.32	0.31	-25%	-1.94%
Motorisation (Cars/1000 inhabitants)	29	50	66	66	66	66	75	80	173%	6.92%
CO2 Emissions										
IEA CO2 from fuel combustion (Mt CO2)*	129.53	156.82	205.47	186.60	198.52	208.53	216.01	225.60	74%	3.77%
IEA transport CO2 (Mt CO2)*	29.18	37.16	38.34	36.25	40.11	40.55	42.70	44.56	53%	2.86%
<i>Transport as a percentage of total</i>	22.5%	23.7%	18.7%	19.4%	20.2%	19.4%	19.8%	19.8%		
Road	25.62	31.23	31.45	30.00	31.53	31.32	31.33	32.25	26%	1.55%
Rail	0.73	0.78	0.64	0.52	0.52	0.56	0.56	0.68	-7%	-0.47%
Domestic Aviation	0.92	2.73	2.28	2.22	2.44	2.58	2.74	2.84	209%	7.80%
International Aviation	0.55	0.81	1.60	1.59	2.65	2.76	2.98	3.33	505%	12.76%
Domestic Navigation	0.78	0.69	0.61	0.78	0.79	0.87	1.21	1.28	64%	3.36%
International Maritime	0.38	0.58	1.27	0.74	1.67	1.95	3.14	3.34	779%	15.59%
Other Transport	0.20	0.34	0.49	0.40	0.51	0.51	0.74	0.84	320%	10.04%
GHG Emissions										
UNFCCC GHG emissions (Mt CO2 eq.)*	170.19	220.86	278.92	260.96	268.85	284.14	293.81
UNFCCC Transport GHG (Mt CO2 eq.)*	26.29	33.28	35.52	35.59	36.63	38.41	41.23
<i>Transport as a percentage of total</i>	15.4%	15.1%	12.7%	13.6%	13.6%	13.5%	14.0%	..		

*includes international aviation and shipping