

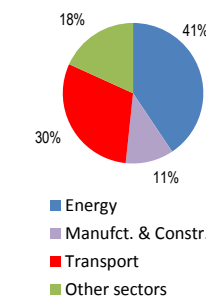
# United Kingdom

Total CO2 from Fuel Combustion including International Air and Maritime (2005)

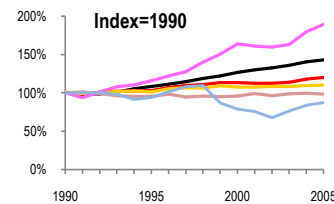
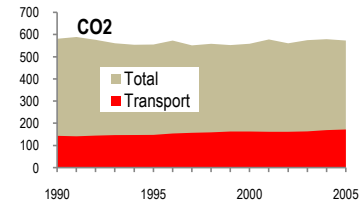
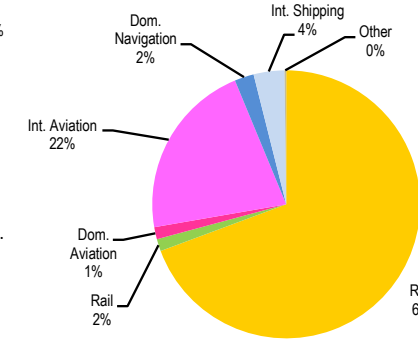
EU		N.Am	Asia-Pac	Other ITF
----	--	------	----------	-----------

Change 1990-2005*	Mt	2005	T per capita	2005	Kg/\$2000 PPP	2005
CO2	1%	573.38	10%	8.8	34%	0.31
Transport CO2	20%	172.6	14%	2.87	16%	0.10
Road CO2	10%	119.68	5%	1.99	23%	0.07
Aviation CO2	90%	39.6	80%	0.66	32%	0.02
Shipping CO2	13%	10.43	17%	0.17	39%	0.01

2005 Total CO2



2005 Transport CO2



Legend for Index=1990 chart:

- GDP
- Mt CO2
- Transport CO2
- Road CO2
- Aviation CO2
- Shipping CO2

Transport and the Economy	1990	1995	2000	2001	2002	2003	2004	2005	1990-2005	% per year
Population (millions)	57.24	58.03	58.89	59.11	59.32	59.55	59.84	60.22	5%	0.34%
GDP (billion 2000 US\$, PPP)	1186.08	1287.66	1506.76	1542.21	1573.96	1615.92	1668.64	1699.55	43%	2.43%
Road passenger km (million pkm)	633590	661200	685600	700540	723600	724300	725900	723434	14%	0.89%
Road freight tonne km (million tkm)	159269	171313	183438	183292	183862	186594	187049	192957	21%	1.29%
Road pkm/capita	11069	11394	11642	11851	12198	12163	12131	12013	9%	0.55%
Road freight tkm/\$ of GDP	0.13	0.13	0.12	0.12	0.12	0.12	0.11	0.11	-15%	-1.11%
Motorisation (Cars/1000 inhabitants)	375	378	426	437	447	453	465	470	25%	1.52%
<b>CO2 Emissions</b>										
IEA CO2 from fuel combustion (Mt CO2)*	581.25	555.39	558.77	578.22	560.92	575.00	579.39	573.38	-1%	-0.09%
IEA transport CO2 (Mt CO2)*	143.84	148.17	163.37	162.16	162.19	163.93	169.69	172.60	20%	1.22%
<i>Transport as a percentage of total</i>	24.7%	26.7%	29.2%	28.0%	28.9%	28.5%	29.3%	30.1%		
Road	108.57	110.23	116.92	116.66	117.99	117.80	119.04	119.68	10%	0.65%
Rail	1.96	1.92	2.31	2.40	2.39	2.41	2.53	2.53	29%	1.72%
Domestic Aviation	5.18	4.09	3.96	4.13	4.35	4.38	4.67	2.52	-51%	-4.69%
International Aviation	15.70	20.17	30.32	29.55	29.00	29.73	32.91	37.08	136%	5.90%
Domestic Navigation	4.00	3.53	2.90	2.04	2.05	3.60	3.50	4.02	0%	0.03%
International Maritime	7.92	7.70	6.51	6.96	6.00	5.52	6.52	6.41	-19%	-1.40%
Other Transport	0.51	0.53	0.45	0.42	0.41	0.49	0.52	0.36	-29%	-2.30%
<b>GHG Emissions</b>										
UNFCCC GHG emissions (Mt CO2 eq.)*	793.99	737.23	710.29	713.27	691.53	697.80	699.80	698.66	-12%	-0.85%
UNFCCC Transport GHG (Mt CO2 eq.)*	141.31	147.91	164.47	164.29	164.93	166.98	172.87	176.13	25%	1.48%
<i>Transport as a percentage of total</i>	17.8%	20.1%	23.2%	23.0%	23.9%	23.9%	24.7%	25.2%		

\*includes international aviation and shipping