

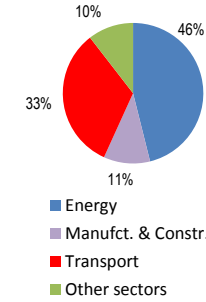
United States

Total CO2 from Fuel Combustion including International Air and Maritime (2005)

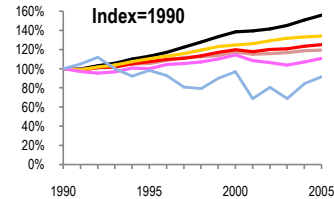
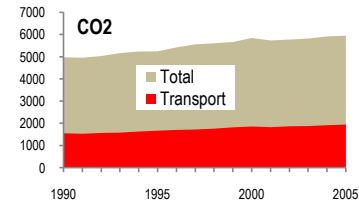
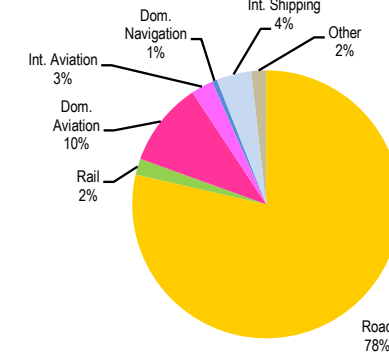
EU	N.Am	Asia-Pac	Other ITF
----	------	----------	-----------

Change 1990-2005*	Mt	2005	T per capita	2005	Kg/\$2000 PPP	2005
CO2	19%	5951.13	1%	20.06	23%	0.54
Transport CO2	25%	1947.5	6%	6.56	20%	0.18
Road CO2	34%	1530.3	13%	5.16	14%	0.14
Aviation CO2	11%	250.89	6%	0.85	29%	0.02
Shipping CO2	8%	93.67	23%	0.32	41%	0.01

2005 Total CO2



2005 Transport CO2



— GDP
— Mt CO2
— Transport CO2
— Road CO2
— Aviation CO2
— Shipping CO2

Transport and the Economy	1990	1995	2000	2001	2002	2003	2004	2005	1990-2005	% per year
Population (millions)	250.18	266.59	282.43	285.37	288.25	291.11	293.93	296.68	19%	1.14%
GDP (billion 2000 US\$, PPP)	7055.00	7972.80	9764.80	9838.90	9997.60	10249.80	10651.70	10995.80	56%	3.00%
Road passenger km (million pkm)	3866922	3899426	4353881	4355726	4450661	4483127	4564468	4523955	17%	1.05%
Road freight tonne km (million tkm)	4072935	4757300	5283199	5377719	5446358	5455479	5620498	5655157	39%	2.21%
Road pkm/capita	15457	14627	15416	15263	15440	15400	15529	15249	-1%	-0.09%
Road freight tkm/\$ of GDP	0.58	0.60	0.54	0.55	0.54	0.53	0.53	0.51	-11%	-0.77%
Motorisation (Cars/1000 inhabitants)	744	728	753	777	766	765	..	777	4%	0.29%
CO2 Emissions										
IEA CO2 from fuel combustion (Mt CO2)*	4980.29	5245.68	5846.95	5736.41	5776.48	5822.58	5919.10	5951.13	19%	1.19%
IEA transport CO2 (Mt CO2)*	1553.78	1670.99	1860.25	1829.21	1868.73	1878.51	1918.26	1947.50	25%	1.52%
<i>Transport as a percentage of total</i>	31.2%	31.9%	31.8%	31.9%	32.4%	32.3%	32.4%	32.7%		
Road	1141.46	1262.67	1427.04	1438.71	1474.18	1506.21	1520.53	1530.30	34%	1.97%
Rail	32.63	32.87	31.06	30.22	31.43	31.58	33.74	37.68	15%	0.96%
Domestic Aviation	187.47	180.31	201.69	193.94	190.06	185.47	192.41	198.83	6%	0.39%
International Aviation	38.78	45.95	57.10	51.73	50.67	49.50	50.38	52.06	34%	1.98%
Domestic Navigation	11.16	9.59	9.77	8.61	9.15	9.52	9.26	11.56	4%	0.24%
International Maritime	91.05	90.84	89.25	61.73	73.23	60.80	77.17	82.11	-10%	-0.69%
Other Transport	51.23	48.76	44.34	44.27	40.01	35.43	34.77	34.96	-32%	-2.52%
GHG Emissions										
UNFCCC GHG emissions (Mt CO2 eq.)*	6343.85	6662.57	7228.03	7113.13	7137.19	7173.75	7287.88	7339.66	16%	0.98%
UNFCCC Transport GHG (Mt CO2 eq.)*	1577.82	1717.04	1913.93	1880.06	1923.55	1911.46	1974.68	2003.78	27%	1.61%
<i>Transport as a percentage of total</i>	24.9%	25.8%	26.5%	26.4%	27.0%	26.6%	27.1%	27.3%		

*includes international aviation and shipping