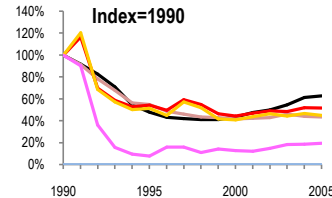
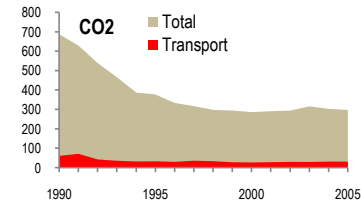
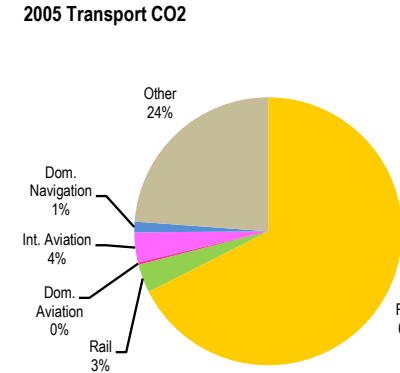
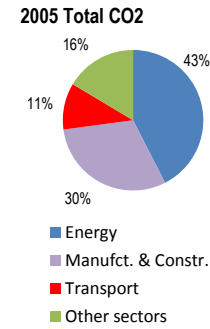


Ukraine

Total CO2 from Fuel Combustion including International Air and Maritime (2005)

EU	N.Am	Asia-Pac	Other ITF	297.9Mt
----	------	----------	-----------	---------

Change 1990-2005*	Mt	2005	T per capita	2005	Kg/\$2000 PPP	2005
CO2	57%	297.97	52%	6.31	31%	1.03
Transport CO2	48%	31.88	43%	0.68	18%	0.11
Road CO2	55%	21.54	50%	0.46	28%	0.08
Aviation CO2	80%	1.24	78%	0.03	69%	0.00
Shipping CO2		0.41		0.01		0.00



Legend for Index=1990 chart:
 — GDP
 — Mt CO2
 — Transport CO2
 — Road CO2
 — Aviation CO2
 — Shipping CO2

Transport and the Economy	1990	1995	2000	2001	2002	2003	2004	2005	1990-2005	% per year
Population (millions)	51.89	51.51	49.18	48.68	48.20	47.81	47.44	47.08	-9%	-0.65%
GDP (billion 2000 US\$, PPP)	456.71	219.22	198.43	216.68	227.95	249.38	279.55	286.82	-37%	-3.05%
Road passenger km (million pkm)	90323	34789	28829	30959	79710	40131	47300	0	-100%	-99.99%
Road freight tonne km (million tkm)	722934	384229	382611	384112	399446	444195	478340	478025	-34%	-2.72%
Road pkm/capita	1741	675	586	636	1654	839	997	0	-100%	-99.99%
Road freight tkm/\$ of GDP	1.58	1.75	1.93	1.77	1.75	1.78	1.71	1.67	5%	0.34%
Motorisation (Cars/1000 inhabitants)	65	89	107	109	112	116	115	118	82%	4.06%
CO2 Emissions										
IEA CO2 from fuel combustion (Mt CO2)*	687.22	377.31	286.59	291.31	294.37	316.31	303.34	297.97	-57%	-5.42%
IEA transport CO2 (Mt CO2)*	61.58	33.41	27.35	28.86	30.27	29.92	31.91	31.88	-48%	-4.29%
<i>Transport as a percentage of total</i>	9.0%	8.9%	9.5%	9.9%	10.3%	9.5%	10.5%	10.7%		
Road	47.79	24.59	19.47	20.85	22.18	21.14	22.34	21.54	-55%	-5.17%
Rail	2.46	1.14	0.78	0.73	0.81	0.87	1.17	1.09	-56%	-5.28%
Domestic Aviation	0.00	0.01	0.01	0.01	0.02	0.02	0.02	0.09
International Aviation	6.34	0.49	0.80	0.77	0.92	1.14	1.16	1.15	-82%	-10.76%
Domestic Navigation	0.41
International Maritime
Other Transport	4.99	7.18	6.29	6.50	6.34	6.75	7.22	7.60	52%	2.84%
GHG Emissions										
UNFCCC GHG emissions (Mt CO2 eq.)*	930.12	522.88	395.63	395.31	401.07	416.32	414.62	420.20	-55%	-5.16%
UNFCCC Transport GHG (Mt CO2 eq.)*	93.43	0.00	34.36	34.82	36.25	37.50	38.70	37.77	-60%	-5.86%
<i>Transport as a percentage of total</i>	10.0%	0.0%	8.7%	8.8%	9.0%	9.0%	9.3%	9.0%		

*includes international aviation and shipping