

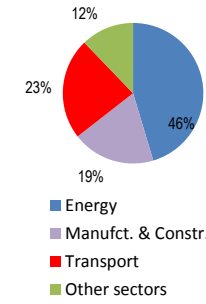
World

Total CO2 from Fuel Combustion including International Air and Maritime (2005)

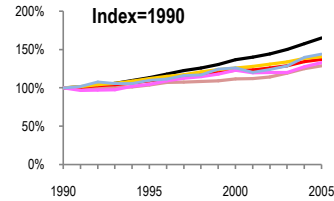
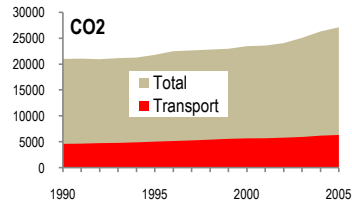
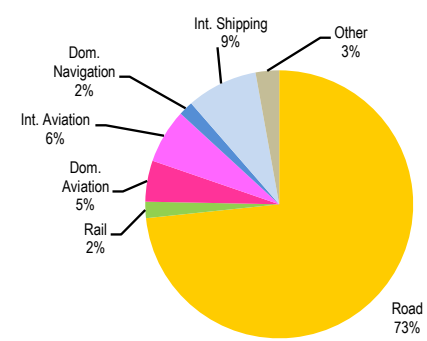
EU	N.Am	Asia-Pac	Other ITF
----	------	----------	-----------

Change 1990-2005*	Mt	2005	T per capita	2005	Kg/\$2000 PPP	2005
CO2	29%	27136.36	5%	4.22	22%	0.50
Transport CO2	37%	6337.02	12%	0.99	17%	0.12
Road CO2	41%	4647.89	15%	0.72	15%	0.09
Aviation CO2	33%	729.77	9%	0.11	19%	0.01
Shipping CO2	44%	654.49	18%	0.10	13%	0.01

2005 Total CO2



2005 Transport CO2



— GDP
— Mt CO2
— Transport CO2
— Road CO2
— Aviation CO2
— Shipping CO2

Transport and the Economy	1990	1995	2000	2001	2002	2003	2004	2005	1990-2005	% per year
Population (millions)	5249.04	5660.88	6053.15	6128.12	6204.15	6280.24	6356.33	6431.68	23%	1.36%
GDP (billion 2000 US\$, PPP)	33059.70	37494.37	45239.36	46385.37	47729.00	49618.71	52160.45	54618.22	65%	3.40%
CO2 Emissions										
IEA CO2 from fuel combustion (Mt CO2)*	21024.43	21807.80	23487.23	23599.03	24075.57	25090.14	26319.92	27136.36	29%	1.72%
IEA transport CO2 (Mt CO2)*	4614.07	5046.63	5677.52	5697.57	5815.29	5947.01	6202.39	6337.02	37%	2.14%
<i>Transport as a percentage of total</i>	21.9%	23.1%	24.2%	24.1%	24.2%	23.7%	23.6%	23.4%		
Road	3306.69	3708.65	4164.22	4231.16	4327.65	4429.07	4581.00	4647.89	41%	2.30%
Rail	147.97	111.87	118.49	115.41	119.04	125.12	118.53	124.97	-16%	-1.12%
Domestic Aviation	255.74	266.74	310.60	299.81	297.31	291.85	308.56	314.12	23%	1.38%
International Aviation	291.70	305.91	363.17	356.44	360.66	364.90	389.75	415.65	42%	2.39%
Domestic Navigation	95.71	93.11	106.86	105.84	106.41	116.04	113.66	111.06	16%	1.00%
International Maritime	357.71	404.57	466.23	439.67	456.02	466.82	520.26	543.43	52%	2.83%
Other Transport	158.55	155.78	147.95	149.24	148.20	153.21	170.63	179.90	13%	0.85%

*includes international aviation and shipping