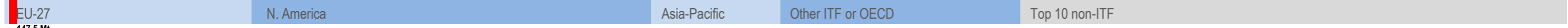
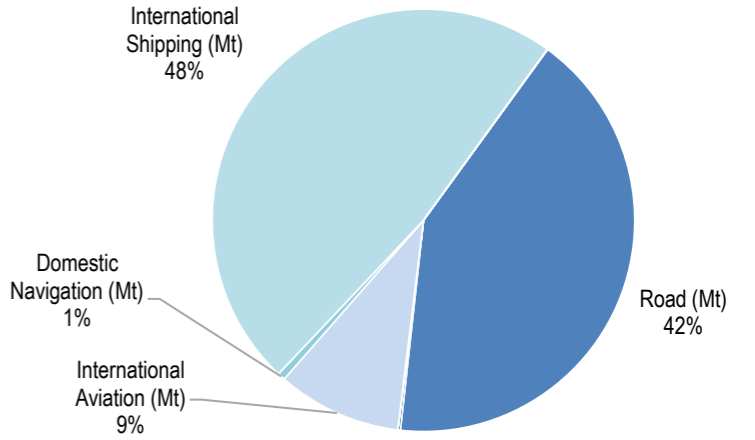
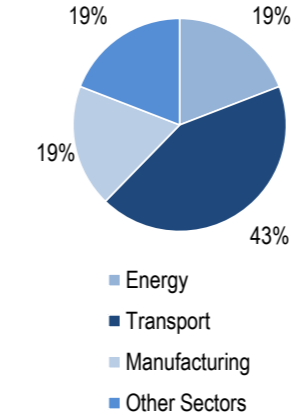
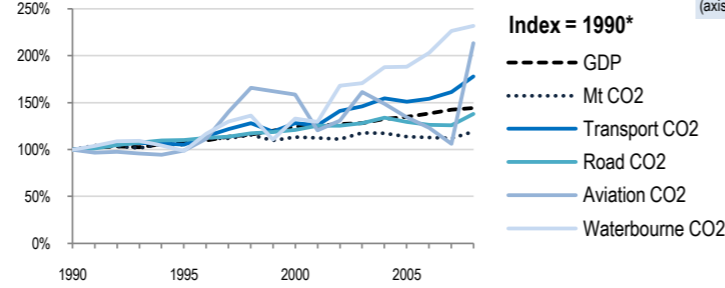
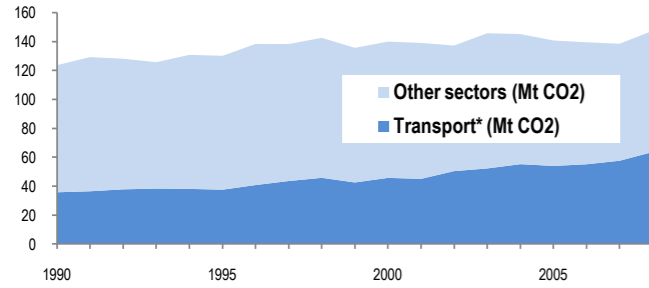


Belgium



Change 1990-2008*	Mt (axis set -50%,100%)	2008	T/capita	2008, Kg/\$2000 PPP	2008	2007-2008	(%Mt)	2008 Total CO ₂ *	2008 Transport CO ₂ *
Total CO ₂	19%	147.5	11%	13.77	-17%	0.45	6.5%	19%	19%
Transport CO ₂	78%	63.63	66%	5.94	24%	0.19	10.5%	43%	48%
Road CO ₂	38%	26.56	28%	2.48	-4%	0.08	9.4%	19%	42%
Aviation CO ₂	113%	6.06	99%	0.57	48%	0.02	101.3%	1%	9%
Waterbourne CO ₂	132%	30.86	116%	2.88	61%	0.09	2.4%	1%	1%



Transport and the Economy	1990	1995	2000	2001	2002	2003	2004	2005	2006	2007	2008	1990-2008	%/year**	% 2007-2008
Population (millions)	9.97	10.14	10.25	10.28	10.33	10.37	10.42	10.47	10.54	10.62	10.71	7%	0.40%	0.85%
GDP PPP (billion 2000 US dollars)	227.21	245.90	283.08	285.30	289.20	291.47	300.90	306.22	314.69	323.96	327.32	44%	2.05%	1.04%
Road passenger km (million pkm)	92158	104228	119400	121470	123960	124730	126800	126960	127990	132300	131270	42%	1.98%	-0.78%
Road and Rail freight tkm (million tkm)	40403	54423	58697	60238	60814	57835	55569	51888	51604	50233	46825	16%	0.82%	-6.78%
Road pkm/capita	9244	10279	11649	11816	12000	12028	12169	12126	12143	12458	12257	33%	1.58%	-1.61%
Road and Rail freight tkm/\$ gdp	0.18	0.22	0.21	0.21	0.21	0.20	0.18	0.17	0.16	0.16	0.14	-20%	-1.20%	-7.74%
Passenger cars per 1000 inhabitants	385	418	456	461	467	465	468	..	474	471	1.19%	..

CO2 Emissions	1990	1995	2000	2001	2002	2003	2004	2005	2006	2007	2008	1990-2008	%/year**	% 2007-2008
IEA CO2 from fuel combustion (Mt)*	123.68	130.13	139.99	139.06	137.27	145.79	145.19	140.77	139.51	138.49	147.5	19%	0.98%	6.51%
... of which transport CO2 (Mt)*	35.73	37.52	45.7	45.03	50.39	52.23	55.18	53.97	55.11	57.56	63.63	78%	3.26%	10.55%
Transport* as a percentage of total	28.9%	28.8%	32.6%	32.4%	36.7%	35.8%	38.0%	38.3%	39.5%	41.6%	43.1%			
Road (Mt)	19.26	21.22	23.25	24.12	24.16	24.71	25.76	24.89	24.36	24.27	26.56	38%	1.80%	9.44%
Rail (Mt)	0.22	0.24	0.18	0.17	0.1	0.13	0.12	0.13	0.13	0.11	0.12	-45%	-3.31%	9.09%
Domestic Aviation (Mt)	0.02	0.2	0.14	0.11	0.05	0.22	0.22	0.01	0.01	0.01	0.01	-50%	-3.78%	0.00%
International Aviation (Mt)	2.82	2.61	4.37	3.31	3.66	4.36	4.01	3.8	3.49	3	6.05	115%	4.33%	101.67%
Domestic Navigation (Mt)	0.4	0.8	0.67	0.59	0.66	0.81	0.36	0.68	0.65	0.6	0.37	-8%	-0.43%	-38.33%
International Shipping (Mt)	12.91	12.31	17.02	16.63	21.73	21.93	24.65	24.40	26.40	29.54	30.49	136%	4.89%	3.22%
Other Transport (Mt)	0.11	0.15	0.06	0.1	0.04	0.07	0.06	0.07	0.08	0.03	0.02	-82%	-9.04%	-33.33%

GHG Emissions	1990	1995	2000	2001	2002	2003	2004	2005	2006	2007	2008	1990-2008	%/year**	% 2007-2008
UNFCCC GHG emissions (Mt CO2 eq.)*	159.81	165.42	165.37	164.80	168.92	172.20	173.27	169.98	167.22	164.45	166.69	4%	0.23%	1.36%
UNFCCC GHG fuel combustion (Mt CO2 eq.)*	127.94	131.09	136.22	136.76	140.81	145.22	145.73	142.95	141.11	139.17	142.20	11%	0.59%	2.17%
... of which transport GHG (Mt CO2 eq.)*	36.89	38.36	45.41	45.73	51.79	52.99	55.18	54.79	56.71	59.59	61.07	66%	2.84%	2.48%
Road (Mt)	19.62	21.68	23.84	24.49	24.81	25.34	26.33	25.43	24.95	24.58	26.86	37%	1.76%	9.27%
International Aviation (Mt)	3.10	2.89	4.66	4.22	3.51	3.82	3.73	3.55	3.69	3.80	4.12	33%	1.59%	8.42%
International Shipping (Mt)	13.32	12.97	16.06	16.21	22.65	22.98	24.26	24.97	27.30	30.44	29.31	120%	4.48%	-3.70%

* includes emissions from international aviation and international maritime bunkers - there is no internationally agreed allocation mechanism for these and totals here are indicative of the scale of these emissions, not of their national "ownership" ** available yrs.