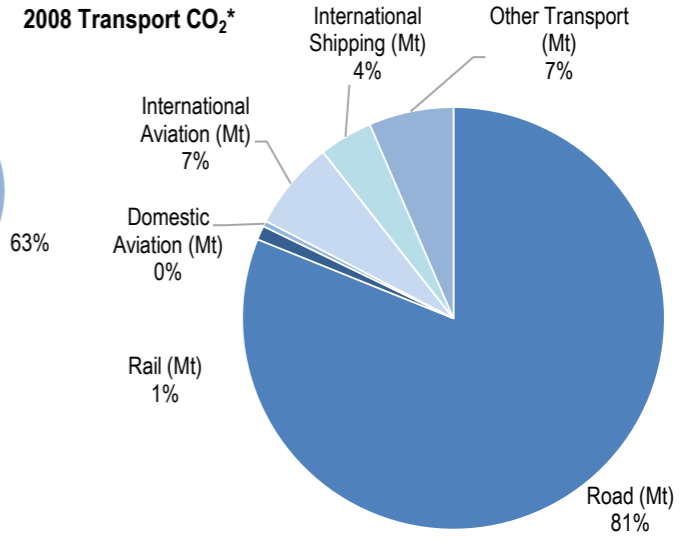
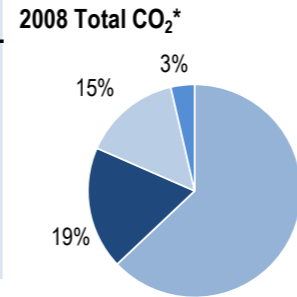
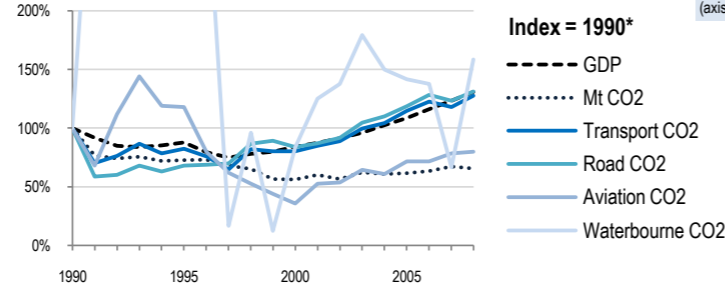
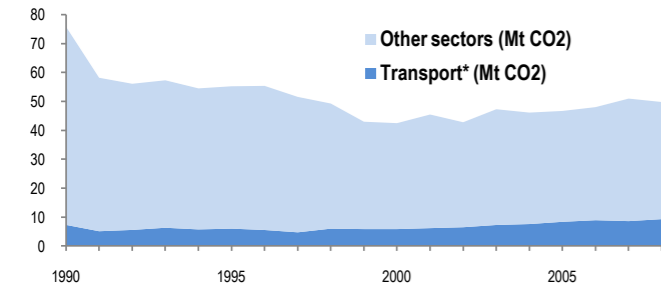


Bulgaria

EU-27 | N. America | Asia-Pacific | Other ITF or OECD | Top 10 non-ITF

49.8 Mt

Change 1990-2008*	Mt (axis set -50%,100%)	2008	T/capita	2008, Kg/\$2000 PPP	2008	2007-2008	(%Mt)
Total CO ₂	-34%	49.79	-25%	6.53	-50%	0.65	-2.3%
Transport CO ₂	28%	9.27	46%	1.22	-2%	0.12	8.0%
Road CO ₂	31%	7.51	50%	0.99	0%	0.10	6.4%
Aviation CO ₂	-20%	0.67	-9%	0.09	-39%	0.01	1.5%
Waterbourne CO ₂	58%	0.38	81%	0.05	21%	0.00	137.5%



Transport and the Economy	1990	1995	2000	2001	2002	2003	2004	2005	2006	2007	2008	1990-2008	%/year**	% 2007-2008
Population (millions)	8.72	8.40	8.06	7.91	7.87	7.82	7.78	7.74	7.70	7.66	7.62	-13%	-0.75%	-0.52%
GDP PPP (billion 2000 US dollars)	58.20	50.98	48.90	50.90	53.19	55.86	59.57	63.29	67.56	71.72	76.04	31%	1.50%	6.02%
Road passenger km (million pkm)	30430	11508	13879	14510	15966	12954	11093	11355	11136	11272	11398	-63%	-5.31%	1.12%
Road and Rail freight tkm (million tkm)	27902	27157	8598	8214	8558	9860	9823	10208	11202	11131	11815	-58%	-4.66%	6.15%
Road pkm/capita	3490	1370	1722	1834	2029	1657	1426	1467	1446	1472	1496	-57%	-4.60%	1.65%
Road and Rail freight tkm/\$ gdp	0.48	0.53	0.18	0.16	0.16	0.18	0.16	0.16	0.17	0.16	0.16	-68%	-6.07%	0.11%
Passenger cars per 1000 inhabitants	146	196	237	264	286	295	314	257	3.38%	..
CO2 Emissions														
IEA CO ₂ from fuel combustion (Mt)*	75.83	55.23	42.47	45.46	42.78	47.29	46.12	46.7	48.02	50.97	49.79	-34%	-2.31%	-2.32%
... of which transport CO ₂ (Mt)*	7.27	5.98	5.82	6.16	6.47	7.25	7.57	8.34	8.9	8.58	9.27	28%	1.36%	8.04%
Transport* as a percentage of total	9.6%	10.8%	13.7%	13.6%	15.1%	15.3%	16.4%	17.9%	18.5%	16.8%	18.6%			
Road (Mt)	5.73	3.89	4.81	4.98	5.26	5.99	6.3	6.8	7.35	7.06	7.51	31%	1.51%	6.37%
Rail (Mt)	0.32	0.23	0.12	0.1	0.1	0.09	0.09	0.09	0.09	0.08	0.1	-69%	-6.26%	25.00%
Domestic Aviation (Mt)	0.13	0.01	0.06	0.13	0.08	0.07	0.06	0.04	0.07	0.12	0.04	-69%	-6.34%	-66.67%
International Aviation (Mt)	0.71	0.98	0.24	0.31	0.37	0.47	0.45	0.56	0.53	0.54	0.63	-11%	-0.66%	16.67%
Domestic Navigation (Mt)	0.06	0.01	0	0	0	0	0	0	0	0	0	-100%
International Shipping (Mt)	0.18	0.85	0.20	0.30	0.33	0.43	0.36	0.34	0.33	0.16	0.38	111%	4.24%	137.50%
Other Transport (Mt)	0.13	0	0.39	0.33	0.33	0.21	0.32	0.51	0.53	0.61	0.6	362%	8.87%	-1.64%
GHG Emissions														
UNFCCC GHG emissions (Mt CO ₂ eq.)*	119.04	90.17	69.69	70.28	67.25	72.75	71.87	71.50	72.66	76.50	74.36	-38%	-2.58%	-2.81%
UNFCCC GHG fuel combustion (Mt CO ₂ eq.)*	81.10	61.44	46.75	48.60	46.23	50.54	49.49	50.04	51.25	54.63	53.51	-34%	-2.28%	-2.05%
... of which transport GHG (Mt CO ₂ eq.)*	12.76	8.42	6.33	6.68	7.03	7.98	8.12	8.86	9.39	8.89	9.30	-27%	-1.74%	4.62%
Road (Mt)	7.67	5.51	5.00	5.17	5.47	6.24	6.51	7.12	7.62	7.32	7.77	1%	0.07%	6.14%
International Aviation (Mt)	0.89	0.55	0.27	0.39	0.40	0.49	0.41	0.47	0.48	0.53	0.53	-40%	-2.84%	0.68%
International Shipping (Mt)	0.88	0.89	0.21	0.31	0.34	0.44	0.37	0.35	0.28	0.17	0.39	-55%	-4.39%	134.72%

* includes emissions from international aviation and international maritime bunkers - there is no internationally agreed allocation mechanism for these and totals here are indicative of the scale of these emissions, not of their national "ownership" ** available yrs.