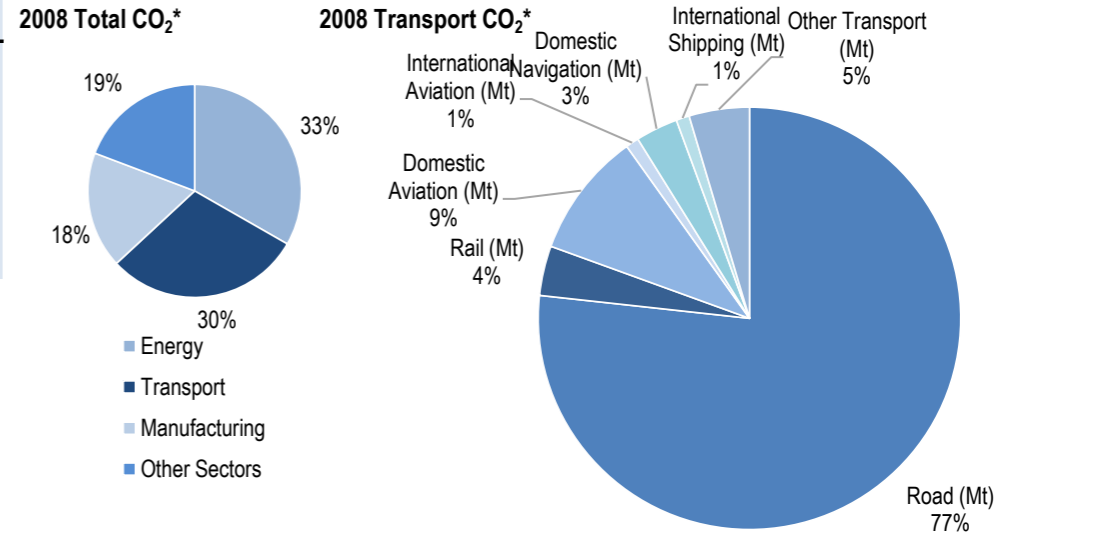
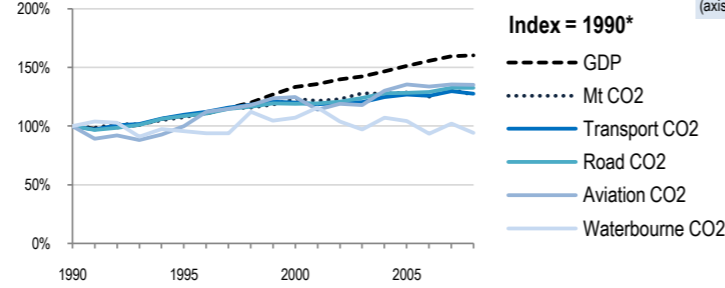
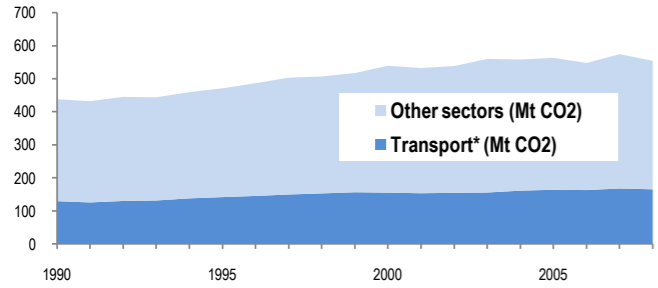


Canada



Change 1990-2008*	Mt (axis set -50%,100%)	2008	T/capita	2008, Kg/\$2000 PPP	2008	2007-2008	(%Mt)
Total CO ₂	27%	554.24	5%	16.63	0.53	-3.5%	-3.5%
Transport CO ₂	28%	165.32	6%	4.96	0.16	-1.5%	-1.5%
Road CO ₂	33%	126.86	10%	3.81	0.12	0.1%	0.1%
Aviation CO ₂	35%	17.52	12%	0.53	0.02	-0.2%	-0.2%
Waterbourne CO ₂	-6%	7.02	-22%	0.21	0.01	-7.9%	-7.9%



Transport and the Economy	1990	1995	2000	2001	2002	2003	2004	2005	2006	2007	2008	1990-2008	%/year**	% 2007-2008
Population (millions)	27.69	29.30	30.69	31.02	31.35	31.64	31.94	32.25	32.58	32.93	33.33	20%	1.04%	1.21%
GDP PPP (billion 2000 US dollars)	655.51	713.88	874.08	889.67	915.69	932.92	962.03	991.07	1019.35	1045.16	1049.49	60%	2.65%	0.41%
Road passenger km (million pkm)	..	497000	502000	481000	493000	485000	488368	512736	510103	503471	494471	..	-0.04%	-1.79%
Road and Rail freight tkm (million tkm)	..	291800	351900	353400	348000	358700	420900	437800	440000	444100	426000	..	2.95%	-4.08%
Road pkm/capita	..	16962	16357	15506	15726	15329	15290	15899	15657	15289	14836	..	-1.03%	-2.97%
Road and Rail freight tkm/\$ gdp	..	0.41	0.40	0.40	0.38	0.38	0.44	0.44	0.43	0.42	0.41	..	-0.05%	-4.47%
Passenger cars per 1000 inhabitants	468	449	547	549	559	561	372	-1.34%	..

CO2 Emissions	1990	1995	2000	2001	2002	2003	2004	2005	2006	2007	2008	1990-2008	%/year**	% 2007-2008
IEA CO ₂ from fuel combustion (Mt)*	437.93	470.98	539.2	532.41	538.48	559.92	558.33	563.25	547.8	574.37	554.24	27%	1.32%	-3.50%
... of which transport CO ₂ (Mt)*	129.42	141.73	155.22	153.47	154.79	155.64	161.29	164.01	163.02	167.84	165.32	28%	1.37%	-1.50%
Transport* as a percentage of total	29.6%	30.1%	28.8%	28.8%	28.7%	27.8%	28.9%	29.1%	29.8%	29.2%	29.8%			
Road (Mt)	95.65	104	113.94	114.02	115.45	118.69	122.52	122.89	123.34	126.75	126.86	33%	1.58%	0.09%
Rail (Mt)	6.21	5.62	5.77	5.67	5.14	5.13	5.21	5.48	5.65	6	6.29	1%	0.07%	4.83%
Domestic Aviation (Mt)	10.25	10.39	13.08	11.54	12.63	13.12	14.15	15	14.78	16.01	15.86	55%	2.45%	-0.94%
International Aviation (Mt)	2.71	2.58	3.08	3.22	2.78	2.14	2.71	2.55	2.53	1.55	1.66	-39%	-2.69%	7.10%
Domestic Navigation (Mt)	4.58	3.95	4.64	5.03	5	5.66	6.08	5.9	5.26	5.6	5.35	17%	0.87%	-4.46%
International Shipping (Mt)	2.87	3.17	3.34	3.59	2.73	1.57	1.91	1.88	1.70	2.02	1.67	-42%	-2.96%	-17.33%
Other Transport (Mt)	7.14	12.02	11.36	10.41	11.05	9.33	8.72	10.31	9.77	9.89	7.63	7%	0.37%	-22.85%

GHG Emissions	1990	1995	2000	2001	2002	2003	2004	2005	2006	2007	2008	1990-2008	%/year**	% 2007-2008
UNFCCC GHG emissions (Mt CO ₂ eq.)*	601.98	651.98	730.84	724.04	728.94	750.82	752.41	743.14	730.13	761.75	745.42	24%	1.19%	-2.14%
UNFCCC GHG fuel combustion (Mt CO ₂ eq.)*	437.00	463.80	535.98	531.10	536.88	553.54	548.86	540.57	526.96	560.87	544.57	25%	1.23%	-2.90%
... of which transport GHG (Mt CO ₂ eq.)*	155.53	170.32	191.94	189.19	190.34	193.06	199.91	204.45	203.38	210.82	209.32	35%	1.66%	-0.71%
Road (Mt)	98.43	108.78	118.83	121.11	122.79	125.36	129.49	130.97	132.58	136.31	135.40	38%	1.79%	-0.66%
International Aviation (Mt)	7.08	7.55	10.17	9.12	9.18	8.51	9.54	10.17	10.14	9.27	9.23	30%	1.48%	-0.47%
International Shipping (Mt)	3.11	3.43	3.56	3.83	2.92	1.68	2.04	2.00	1.81	2.15	1.77	-43%	-3.08%	-17.39%

* includes emissions from international aviation and international maritime bunkers - there is no internationally agreed allocation mechanism for these and totals here are indicative of the scale of these emissions, not of their national "ownership" ** available yrs.